

Max distance between solar panels and inverter





Overview

In a perfect world, solar panels could be placed any distance from inverters and work just fine. But unfortunately, the reality is that solar panels should be 20 to 50 feet from the inverter to reduce losses and improve the efficiency of the system as a whole. How far apart should a solar inverter be?

The further apart they are, the more wire you'll need. The maximum distance between solar panel and inverter will vary depending on the type of equipment you're using. For example, if you're using a string inverter with your solar panels, the maximum distance will be around 100 feet (30 meters).

What is the maximum distance a solar inverter can run?

For example, if you're using a string inverter with your solar panels, the maximum distance will be around 100 feet (30 meters). If you're using a microinverter or MPPT charge controller, then the maximum distance will be much shorter - around 16 feet (5 meters). So why does this maximum distance matter?

.

How does the distance between solar panels and the inverter affect efficiency?

The distance between panels and the inverter can impact system efficiency and output due to factors such as wire length, temperature, and energy loss during transport. For instance, the longer the wire connecting the solar panels to the battery or inverter, the more energy is lost in transport.

How far can you install solar panels?

You can install solar panels up to 500 feet from your home, but that will require long and expensive wires to prevent energy loss. A distance of 50 feet or less will keep the voltage drop at 2%, which is the acceptable limit for current. How Distance Affects Solar Panel Output?



How far should a solar panel be from a battery?

Generally, 20-30 feet is the ideal distance between a solar panel, such as an array, and the solar battery backup supply. The longer the wire from the solar panel to the battery, the more energy lost in transport. The amount of energy lost also depends upon the gauge or thickness of the wire. Thicker wires lose less energy.

How far can you run solar panel cables?

You may be wondering how far you can run your solar panel cables. The answer depends on a few factors, such as the type of cable you're using and the amount of power your panels are generating. For example, if you're using a standard 12-gauge copper wire, you can run it up to 100 feet without losing any power.



Max distance between solar panels and inverter



How Far Can I Run My Solar Panel Cables & And the Battery

The maximum distance between solar panel and inverter will vary depending on the type of equipment you're using. For example, if you're using a string inverter with your solar ...

How far from inverter can batteries be? , DIY Solar Power Forum

We have two systems connected to separate meter loops in our yard. System A is grid-tie only and ties to the house meter. System B is a hybrid and connected to the shop & water well. Both arrays are side by side but their individual inverters are in separate buildings 150' apart. Would i be



[Inverter distance questions](#)

Inverter distance questions 03-26-2014, 05:44 PM So I have this narrowed down to what I want to do and now trying to figure out where to put it all. I have the option to install panels on top of a storage shed 75 feet away from my cabin (400SqFt). Doing this I

[Distance between solar panels?](#)

May sound daft but- if I had panels on the main house and garage roof which is detached- is there a problem with distance between the arrays? Currently the plan is : 4.2kw on the garage roof with a 3.6kw inverter to "keep me in



g98 regs?" but I'm thinking more is better?



Connect Solar Panels To An Inverter: A Step-by-Step Guide

How to Connect Solar Panels to an Inverter If you want to connect solar panels to an inverter, you need to follow a few simple steps. Here's a step-by-step guide to help you out: Step 1: Determine Your Power Needs Before you start connecting your solar panels

Distance from batteries to inverter charger

While the inverter needs 2/0, the battery cables might need 3/0 or 4/0 because the batteries need to handle the inverter current, the SCC current, and DC loads current. If it's all maxed out at the same time, the battery cables (between the batteries and to the bus bars) need to handle the full total.



How Far Can I Run My Solar Panel Cables & And the Battery

The maximum distance between solar panel and inverter will vary depending on the type of equipment you're using. For example, if you're using a string inverter with your solar panels, the maximum distance will be around 100 feet (30 meters).





How Far Between Solar Panels Should be Away From?

There should also be a centimeter-grade distance between two adjacent solar panels (the outer frame) in each row, as the panel frame contracts and expands with the weather. Additionally, there must be at least 12 inches of space between the solar panels and the edge of the roof to comply with building codes and ensure the safety of the array.

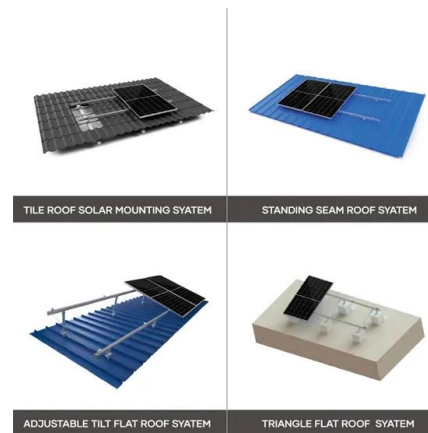


[Powerwall System Design , Tesla Support](#)

When designing your system, Tesla will recommend the number of Powerwall units needed to back up your entire home (whole home backup). This means that during a power outage, your Powerwall system would be able to support all your appliances.

Solar Inverter Sizing to Improve Solar Panel Efficiency

we live altona meadows melbourne, have 14x 190 panels facing west, with 4.2 growatt (mtl) inverter. installed dec 2011. max produce during summer was 19.9 kw 1 day, av @ 14-16 kw + saw many day peaks of over ...



[How Far From a House Can Solar Panels Be?](#)

Aside from the distance, the solar panels should be placed near direct sunlight as possible. Install the solar panels so they face true south (if you're in the southern hemisphere, direct the panels true north). Combine this with a short distance and your solar panel



Max distance from panels to charge controller

OK stop 300' isn't that long of a distance. unless you are going 12V. (I have 4KW grid tie systems at 700' from inverter but voltage is higher and amperage is lower) I would suggest a an Midnight solar classic 250 CC that will allow him to run up to 250V into it. This



[How Far Can Solar Panels Be From The House?](#)

Ground-Mounted Solar Panels: The distance between ground-mounted solar panels and a house can vary more widely. Typically, the panels may be situated within 20 to 50 feet of the house. This distance can be longer if the property layout, shading, or ...

How to Wire Solar Panels to Inverter: Complete Guide

Wiring Solar Panels in Series-Parallel Connection
It is a mix of series and parallel wiring, where you make strings of panels in series and connect them in parallel. This lets you change the voltage and current for the inverter. ...



[How Far Can Solar Panels Be From Inverter](#)

The ideal distance between your solar panels and the inverter is typically not a one-size-fits-all answer, but there are some general guidelines to follow. In most cases, it's recommended to keep the distance under 100 feet ...





How Far Can Solar Panels Be From Charge ...

The solar panels and inverter's ideal distance should also be as close as possible - no more than 10-20 feet, if possible. Remember, distance equals power loss. Keep this relationship in mind when you're determining ...



Maximum distance between solar array and inverter : r/solar

Microinverters (e.g. Enphase) are mounted on the back of the solar panels and rated for outdoor use. The other benefit of using the microinverters is that you'll be running AC over the long distance instead of DC and so that will likely significantly change the wiring

Solar Inverter comparison chart

Many of these new inverters have only just become available, while the MIL Solar inverter is the only Australian-made string solar inverter. Provide your professional feedback here. Other inverter comparison charts: Hybrid Solar Inverters 3-phase Hybrid Inverters



How Far Between Solar Panels Should be?

The minimum distance between solar panels is 4 to 7 inches (17.78 cm), which is the size of a row of solar panels on a solar power system. This space allows for frame contraction and expansion with the weather. Additionally, solar panels must have a 12-inch



Long Distance between Solar Panels and Meter : r/SolarDIY

I don't see how a hybrid inverter could be utilized in Solution 1 (inverters 500ft from meter/panels). Dedicated inverters (eg powerwall) could work in Sol 1 as I see it, though are less price efficient. I am planning to use a string inverter given all the panels will be



Solar Panel Distance (Battery + Charge Controller + Inverter/House)

Generally, 20-30 feet is the ideal distance between a solar panel, such as an array, and the solar battery backup supply. The longer the wire from the solar panel to the ...

How Far Can Solar Inverter be From Main Panel?

The distance between the solar inverter and the main panel is determined by a number of factors, including cable length, inverter technology, and adherence to electrical codes. By learning about these considerations, you ...



[How Far Can Solar Panels Be From Inverter?](#)

The second technique to address this question is to inquire about the distance between the solar panels and the inverter. The batteries and inverter don't have to be in the same room, but they should be close. If your home is grid-tied, you can put the inverter inside



How Far Can Solar Panels Be from Charge Controller? - ...

Learn about the factors that affect the distance between solar panels and charge controllers, the maximum distance recommended, Cart 0 Solar Inverters Solar Batteries Solar Panels Solar Controllers Solar Kits Wiring & Accessories Log In/Create Account



How Far Can Solar Panels Be from the Inverter? A Guide to ...

When designing a solar power system, it is crucial to optimize the distance between solar panels and the inverter to ensure maximum efficiency and output. Ideally, solar panels should be as close to the inverter and charge controller as possible, with ...



[SolarEdge Home Battery FAQs](#)

Q31: Is there a maximum cable length limit between the inverter and the battery? A: Yes, 50 meters. Please refer to this table in the Home Battery Quick Start Guide. Max Distance 1(m) Single 2Battery Two Batteries Three Batteries



[How far can my solar array be from my house?](#)

We'll just make sure to size your wire gauge appropriately so the system doesn't experience any inefficiencies from voltage drop across that longer distance. Up to 250-300 feet between panels and pump, use 12 gauge submersible wire. For distances further



Choosing Between Series and Parallel Connections for Solar Panels

Did you know a single string inverter can handle 300 to 500 volts in a solar system? This range shows the importance of knowing about solar panel series and parallel connection. These connections greatly affect a solar array's efficiency. Most solar panels have an

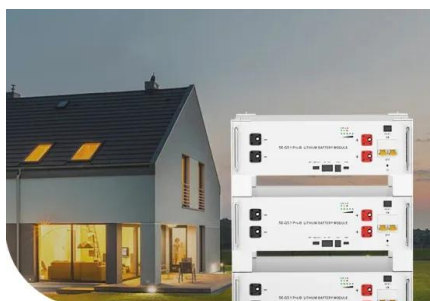


How Far Can Solar Panel Be from Gate Opener

The distance between solar panels and the inverter can vary, but it's generally recommended to keep it under 100 feet. This minimizes energy loss during transmission. The wire size and type should be chosen carefully to ...

Distances from panels to inverter

With high voltage dc used on modern solar systems the distance between panels and inverters can be quite far 100s feet possible. Inverters and batteries should be close to the house to minimize voltage drop affecting loads in the house.



Low Voltage Lithium Battery

6000+ Cycle Life

The best distance between solar panels and house

The ideal distance between solar panels and a house can vary depending on the layout of the property and other factors. On Grid Solar Inverters Single Phase Growatt Inverters MIC 750~3300 TL-X MIN 2500~6000 TL-X MIN 7000~10000 TL-X 3 Phase Growatt



Contact Us

For catalog requests, pricing, or partnerships, please visit:
<https://vdbconstruction.co.za>