

# National renewable laboratory





## Overview

---

National Renewable Energy Laboratory (NREL) is a leading research and development organization in the United States. NREL focuses on advancing renewable energy technologies, including solar, wind, and energy storage. NREL also provides technical assistance and research services to the private sector. NREL is a part of the National Science Foundation.

The National Renewable Energy Laboratory (NREL) in the US specializes in the of , , energy systems integration, and sustainable transportation. NREL is a sponsored by the and operated by the Alliance for Sustainable Energy, a joint venture between



## National renewable laboratory

---



### Hydrogen and Fuel Cells , NREL

NREL's hydrogen and fuel cell research is lowering the cost and increasing the scale of technologies to make, store, move, and use hydrogen across multiple energy sectors. NREL is developing durable, efficient fuel cell ...

??????????

??????????(?:National Renewable Energy Laboratory??NREL),????????????,????????????????????????????????  
??? NREL????????????????????,????????????????????????????,?  
????????????????????  
NREL????????,???????????????? NREL?? ...



### **Joseph Berry -- National Renewable Energy Laboratory**

Joseph Berry is a senior research scientist at NREL. He received his doctorate in physics from Penn State University in 2001. His thesis work focused on semiconductor spintronics with an emphasis on coherent spin transport across ...

### National Renewable Energy Laboratory

National Renewable Energy Laboratory , LinkedIn  
??? 235,540? , #TransformingEnergy , The  
National Renewable Energy Laboratory (NREL), a  
Department of Energy national lab, is  
#TransformingEnergy as the nation& #39;s  
primary laboratory for renewable energy and



energy efficiency research and development.  
NREL's Mission: NREL develops renewable energy ...



### Kai Zhu

Kai Zhu is a senior scientist in NREL's Chemistry and Nanoscience Center. He joined NREL in 2004 as a postdoctoral researcher, working with Arthur J. Frank on fundamental charge-carrier transport and recombination in photoelectrochemical cells, especially dye-sensitized solar cells.

### [National Renewable Energy Laboratory](#)

The National Renewable Energy Laboratory (NREL) is dedicated to the research, development, commercialization, and deployment of renewable energy and energy efficiency technologies. Enforcement VIEW ALL Enforcement Letter, Alliance for Related to



### AT A GLANCE: NATIONAL RENEWABLE ENERGY LABORATORY

National Renewable Energy Laboratory (NREL) is DOE's primary National Laboratory for renewable energy and energy efficiency R& D. The laboratory delivers impactful scientific ...





**Weijia LIU , PhD , Ph.D. , National Renewable Energy Laboratory...**

National Renewable Energy Laboratory Golden, United States Position Researcher July 2017 - May 2019 University of Saskatchewan Canada Position PostDoc Position January 2015 - July 2015 The



**National Renewable Energy Laboratory , Golden CO**

National Renewable Energy Laboratory, Golden, Colorado. 103,298 likes · 147 talking about this · 5,302 were here. NREL is the nation's & Department of Energy's primary national lab for renewable energy.

???????????

?????????? (?: National Renewable Energy Laboratory ?? NREL),???? ????? ???,????? ????? ? ??? ??????????. NREL?? ...



[National Renewable Energy Laboratory](#)

OverviewHistoryDepartment of Energy fundingCommercialization and Technology TransferNational Center for PhotovoltaicsNational Bioenergy CenterNational Wind Technology CenterSustainable Transportation and Mobility Research

The National Renewable Energy Laboratory (NREL) in the US specializes in the research and development of renewable energy, energy efficiency, energy systems integration, and



sustainable transportation. NREL is a federally funded research and development center sponsored by the Department of Energy and operated by the Alliance for Sustainable Energy, a joint venture between MRIGlobal

### Research , NREL

The National Renewable Energy Laboratory is a national laboratory of the U.S. Department of Energy, Office of Energy Efficiency and Renewable Energy, operated by the Alliance for Sustainable Energy LLC.



### Best Research-Cell Efficiency Chart , Photovoltaic Research , NREL

The National Renewable Energy Laboratory is a national laboratory of the U.S. Department of Energy, Office of Energy Efficiency and Renewable Energy, operated by the Alliance for Sustainable Energy LLC.

### [National Renewable Energy Laboratory](#)

National Renewable Energy Laboratory Research Hub. NREL leads research, innovation, and strategic partnerships to deliver solutions for a clean energy economy. Use the search box ...

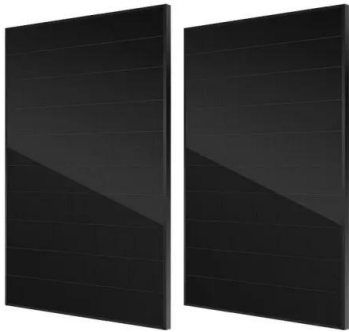


### Solar Resource Data, Tools, and Maps , Geospatial Data Science ...

The National Renewable Energy Laboratory is a national laboratory of the U.S. Department of Energy, Office of Energy Efficiency and



Renewable Energy, operated by the Alliance for Sustainable Energy LLC.



National Renewable Energy Laboratory

The National Renewable Energy Laboratory is the only federal laboratory dedicated to the research, development, commercialization, and deployment of renewable energy and energy efficiency technologies. We focus on creative answers to today's energy from



National Renewable Energy Laboratory (NREL)

The National Renewable Energy Laboratory (NREL), with campuses located in Colorado and Alaska, is the United States' primary laboratory for renewable energy and energy efficiency research and development. NREL is operated by the Alliance for Sustainable

**Xiaowen Chen -- National Renewable Energy Laboratory**

National Renewable Energy Laboratory Hub  
Home Hub Home Researcher Profiles Research  
Output Research Organizations Awards & Honors  
Activities Search by expertise, name, or  
affiliation View Scopus Profile Xiaowen Chen  
Researcher IV-Chemical, Email





### AT A GLANCE: NATIONAL RENEWABLE ENERGY LABORATORY

National Renewable Energy Laboratory (NREL) is DOE's primary National Laboratory for renewable energy and energy efficiency R& D. The laboratory delivers impactful scientific discoveries, innovations, and insights that transform clean energy technologies

### Annual Technology Baseline: The 2022 Electricity Update -- National

With the Annual Technology Baseline (ATB), the National Renewable Energy Laboratory annually provides an organized and centralized set of such cost and performance data. The ATB uses the best information from the Department of Energy national laboratories' renewable energy analysts.



### Xin Jin

Jin, X., 2023, National Renewable Energy Laboratory (NREL). Research output: NREL > Poster Energy Engineering 100% Photovoltaics 100% Optimal Design 100% Optimal Control 100% Artificial Intelligence 100% Challenges and Opportunities of Machine

### 2016 Annual Technology Baseline (ATB): NREL (National Renewable ...

With the Annual Technology Baseline (ATB), National Renewable Energy Laboratory provides an organized and centralized dataset that was reviewed by internal and external experts. It uses the best information from the Department of Energy laboratory's renewable energy analysts and Energy Information Administration information for conventional technologies.





Support any customization

Inkjet Color label LOGO



### PVWatts Calculator

NREL is a national laboratory of the U.S. Department of Energy, Office of Energy Efficiency and Renewable Energy, Operated by the Alliance for Sustainable Energy, LLC. PVWatts® is a registered trademark by Alliance for Sustainable Energy, LLC in Golden, CO, 80401.

### Data and Tools , NREL

The National Renewable Energy Laboratory is a national laboratory of the U.S. Department of Energy, Office of Energy Efficiency and Renewable Energy, operated by the Alliance for Sustainable Energy LLC.



??????????

?????????? (?: National Renewable Energy Laboratory ?? NREL),???? ????? ???,???? ????? ?  
???? ?????????? NREL??? ...

### Solar Research , NREL

The National Renewable Energy Laboratory is a national laboratory of the U.S. Department of Energy, Office of Energy Efficiency and Renewable Energy, operated by the Alliance for Sustainable Energy LLC.







**TAX FREE**

**Product Model**  
HJ-ESS-215A(100KW/215KWH)  
HJ-ESS-115A(50KW/115KWH)

**Dimensions**  
1600\*1280\*2200mm  
1600\*1200\*2000mm

**Rated Battery Capacity**  
215KWH/115KWH

**Battery Cooling Method**  
Air Cooled/Liquid Cooled

### [2022 Cost of Wind Energy Review](#)

Northwest National Laboratory) for their analysis of wind project market data that informed this analysis. Thanks also to Philipp Beiter, Eric Lantz, Rob Hammond, Aubryn Cooperman, Matt Shields, Owen Roberts, and Annika Eberle (National Renewable Energy

### **National Renewable Energy Laboratory (NREL) Home Page**

The National Renewable Energy Laboratory (NREL) is transforming energy through research, development, commercialization, and deployment of renewable energy and energy efficiency technologies. Partner with us to accelerate the transition of renewable energy and energy efficiency technologies to the marketplace.



## **Contact Us**

For catalog requests, pricing, or partnerships, please visit:  
<https://vdbconstruction.co.za>