

# Optimum lithium battery





## Overview

---

What is Optima® battery?

The ORANGETOP™ with HYPERCORE LITHIUM™ TECHNOLOGY is bringing OPTIMA® power, performance and reliability to motorcycles, UTVs, ATVs and all powersport vehicles. This vibration-resistant lithium battery is a lighter weight option that provides the power and reliability you've come to expect from OPTIMA®.

Are Optima lithium ORANGETOP batteries good?

Optima lithium ORANGETOP batteries are a great solution for 95% of your powersports toys, including cars, SUVs, and trucks\*. The lithium weight difference is really noticeable on lighter vehicles like UTVs and motorcycles.

What is a lithium powered Optom?

The all-new lithium powered ORANGETOP™ is a high-capacity, long-lasting battery, featuring Bluetooth and NMEA 2000 compatibility. The ORANGETOP™ with HYPERCORE LITHIUM™ TECHNOLOGY is bringing OPTIMA® power, performance and reliability to motorcycles, UTVs, ATVs and all powersport vehicles.

What is Optima AGM & lithium battery technology?

OPTIMA AGM and Lithium battery technologies are designed to perform in today's modern performance vehicles and are trusted by enthusiasts all over the world to deliver the ultimate in power, performance and reliability. Brute Power OPTIMA delivers raw force to power through the most aggressive demands.

What temperature can a Optima Powersports battery be charged?

OPTIMA ORANGETOP Powersports batteries can accept a charge up to 122°F. OPTIMA Q31M series ORANGETOP batteries have a charging temperature limit of 113°F and an operating temperature limit of 131°F. -Can I charge an



ORANGETOP Powersports battery without the POWERLINK dongle?

.

How do I Wake Up my Optima orangetop lithium battery?

OPTIMA ORANGETOP lithium will automatically wake from Sleep/Storage mode for charging if an OPTIMA lithium-enabled charger is used. If using a non-OPTIMA charger, it may be necessary to manually “wake” the battery using the POWERLINK™ button on the powersports battery or the on/off button on the Q31M series batteries.



## Optimum lithium battery



### Ultimate Guide to Lithium-Ion Battery Voltage Chart

12V Lithium Battery Voltage Chart Generally, battery voltage charts represent the relationship between two crucial factors -- a battery's SoC (state of charge) and the voltage at which the battery runs. The below table illustrates the 12V lithium-ion battery voltage chart (also known as 12 volt battery voltage chart).

### OPTIMA Introduces Its First-ever Lithium Battery With State

The all-new ORANGETOP powersports battery line relies on OPTIMA's HYPERCORE LITHIUM technology and has multiple industry-first features that maximize performance and reliability, minimize weight and improve convenience MILWAUKEE (Nov. 1, 2022) - OPTIMA Batteries, a leading brand of Clarios, has announced its first-ever lithium-ion 12-volt battery, the ...



### OPTIMA , Clarios

OPTIMA® AGM and Lithium Batteries are designed, tested and proven to meet the power demands of almost any vehicle -- whether on-road, off-road or on the water. OPTIMA AGM and Lithium battery technologies are designed to perform in today's modern performance vehicles and are trusted by enthusiasts all over the world to deliver the ultimate in power, performance and ...

### Temperature effect and thermal impact in lithium-ion batteries: A



Lithium-ion batteries (LIBs), with high energy density and power density, exhibit good performance in many different areas. The performance of LIBs, however, is still limited by the impact of temperature. The acceptable temperature region for LIBs normally is -20



### Ideal Operating Temperatures for Lithium Batteries

For example, when we look at temperature there are two clear categories: the temperature range in which the battery can operate, and the ideal operating temperature range for lithium batteries. Ask 10 different experts or consult ten different resources, and you'll get ten different answers as to the battery's potential and ideal temperature ranges.

### Optimum Battery Co., Ltd.

Quality LiFePO4 battery for sale, LiFePO4 battery & Lithium iron phosphate battery provided by China Suppliers - Optimum Battery Co., Ltd.. high energy 48v 50ah lithium battery for telecom base FOB Price: USD \$500 / Pack Min. Order: 1 Packs lithium ion battery



### Duracell Optimum vs Regular , Differences and Comparison

No matter what type of electrical device you use, it requires a power source. Without it, it is like having a rock or something to pretend it is working. Who doesn't like to imagine, right? As there are a lot of devices going wireless, the need for batteries is now in high demand than ever. [...]



### **BU-808: How to Prolong Lithium-based Batteries**

A device with Lithium batteries (especially Li-ion & Li-Polymer/LiPo) should not be left connected to chargers for >1 month unattended. To sum it up for optimal battery life, disable quick charge, charge as often as possible and keep the percentage as close to 100% as possible.



### **Debunking Lithium-Ion Battery Charging Myths: Best Practices for**

Data from the IEEE Spectrum shows that a lithium-ion battery's optimal temperature range for charging is between 20 C to 45 C (68 F to 113 F). Charging outside of this range can significantly reduce the battery's lifespan. For example, charging at high

### **A Designer's Guide to Lithium (Li-ion) Battery Charging**

This article takes a closer look at Li-ion battery developments, the electrochemistry's optimum charging cycle, and some fast-charging circuitry. The article will ...



### **OPTIMA Batteries Deep Cycle & AGM Batteries for Cars, Trucks ...**

This vibration-resistant lithium battery is a lighter weight option that provides the power and reliability you've come to expect from OPTIMA®. The ORANGETOP(TM) also comes equipped ...



## OPTIMA Introduces Its First-ever Lithium Battery With ...

MILWAUKEE (Nov. 1, 2022) - OPTIMA Batteries, a leading brand of Clarios, has announced its first-ever lithium-ion 12-volt battery, the ORANGETOP with HYPERCORE LITHIUM technology. With innovative features like OPTIMA ...



## Lithium (LiFePO4) Battery Runtime Calculator - Dot Watts®

Lithium batteries can be discharged at 1C (for example, 100 amps for a 100Ah battery). Discharging your battery at a higher rate than what is recommended will increase the heat in battery cells. As a result, your battery will drain quickly. For instant, if you're

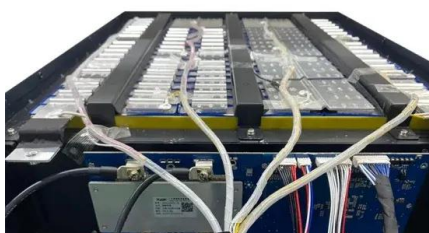
## Modelling optimum thickness and architecture for lithium-ion battery

Detailed descriptions of LIB cell mechanisms according to the DFN framework are well-documented in literature [7], [19], [20]. They have been used to efficiently predict and enhance battery cell performance parameters [21], investigate fast-charging capabilities [22], simulate cell degradation due to lithium plating and dendrite formation [23], predict crack ...



## GRADE A BATTERY

LiFePO4 battery will not burn when overcharged/over discharged, overcurrent or short circuit and can withstand high temperatures without decomposition.



## Best Practices for Charging, Maintaining, and Storing Lithium Batteries

Welcome to our comprehensive guide on lithium battery maintenance. Whether you're a consumer electronics enthusiast, a power tool user, or an electric vehicle owner, understanding the best practices for charging, maintaining, and storing lithium batteries is crucial to maximizing their performance and prolonging their lifespan. At CompanyName, we have compiled



a...

### Duracell Optimum vs Energizer Lithium: 5 Key Differences

As an Amazon Associate we earn from qualifying purchases made on our website. Are you confused about which is better between Duracell Optimum and Energizer Lithium? We get it--picking the right battery brand can be a daunting task. Worry not! Here, we'll put these two products head-to-head so that you have an idea of their ... Duracell Optimum vs ...



### [Lithium-Ion Batteries: Safe Temperatures?](#)

Safe storage temperatures range from 32° (0?) to 104° (40?). Meanwhile, safe charging temperatures are similar but slightly different, ranging from 32° (0?) to 113° (45?). While those are safe ambient air temperatures, the internal temperature of a lithium-ion battery is safe at ranges from -4° (-20?) to 140° (60?).

### Complete Guide for Lithium ion Battery Storage

below 0 C, at 40% to 50% capacity. Storage at 5 C to 15 C is optimal. Since lithium batteries self-discharge, it is recommended that they must be recharged every 12 months. We can further divide it into short-term storage and long-term storage.



### Your Useful Guide to Li-ion Battery Operating ...

Part 4. Tips for managing li-ion battery operating temperatures To ensure optimal performance and longevity of Li-ion batteries, effectively managing their operating temperatures is essential. 1. Avoid Extreme ...



### Duracell Optimum

RECLOSABLE PACKAGE: Duracell Optimum batteries come in a reclosable package for quick, easy access and storage #1 TRUSTED BATTERY BRAND: From storm prep to holiday needs, Duracell is the #1 trusted battery brand for ...



### Differences Between Duracell Optimum And Energizer Lithium Batteries

When it comes to powering our devices, we all want the best. That's why the battle between Duracell Optimum and Energizer Lithium batteries is one that sparks curiosity. As an expert in the field, I've had the opportunity to put these two powerhouses to the test. In this article, I'll dive into the key differences and similarities between Duracell Optimum and Energizer Lithium batteries, ...

### Optimal operating temperature of Li-ion battery [26]

Download scientific diagram , Optimal operating temperature of Li-ion battery [26] from publication: Review Of Comparative Battery Energy Storage Systems (Bess) For Energy Storage Applications In



### Storing Lithium Batteries Best Voltages By Chemistry

Remove the lithium-ion battery from a device before storing it, and make sure to store the battery at 60-70% of the pack's rated capacity, with a voltage of around 3.6V. Use a lithium-ion battery fireproof safety bag or ...

### OPTIMA , Clarios

OPTIMA® AGM and Lithium Batteries are designed, tested and proven to meet the power demands of almost any vehicle -- whether on-road, off-road or on the water. OPTIMA AGM and Lithium battery technologies are designed to ...



### How To Store Lithium Batteries For The Winter - Storables

Monitoring and Maintenance During Winter While storing your lithium batteries for the winter, it's important to monitor their condition and perform necessary maintenance to ensure their optimal performance. Here are some key steps to follow: 1. Regular Inspection: Periodically check on the stored batteries to ensure there are no signs of damage, leakage, or ...



### Lithium Batteries 101: Charging and Maintenance Tips

While optimal charging practices are crucial for lithium battery longevity, proper storage and handling are equally imperative to ensure safety and maintain battery efficacy. Lithium batteries possess a limited life; thus, ...



### A Comparison Between Duracell Optimum vs Energizer Lithium

It's not like Energizer is not packing less energy in them. The Energizer Lithium comes with a whopping 2200 mAh. But the Duracell just has 2000 mAh and still outperforms in time. The reason behind it can be described by their build. The Duracell battery is an

### Optimal Lithium Battery Charging: A Definitive Guide

Secrets to Proper Charging. Charging a lithium battery pack may seem straightforward initially, but it's all in the details. Incorrect charging methods can lead to reduced battery capacity, degraded performance, and ...



### How Do Lithium Batteries Perform in Cold Weather?

A battery blanket is an effective tool for maintaining an optimal temperature for lithium batteries in cold weather. These blankets are designed to wrap around the battery, providing consistent warmth that helps keep the battery within its ...





### Makita BL1840BDC2 18V LXT® Lithium-Ion Battery and Rapid Optimum

Build your own Makita tool kit with the 18V Lithium-Ion Battery and Rapid Optimum Charger Starter Pack. Makita offers over 250 cordless tools that utilize 18V lithium-ion batteries, most available as "bare tools" (tool only, no batteries or charger included). Pick up



### How to Charge Lithium-Ion Batteries: Best Practices

Chargers specifically designed for lithium batteries are recommended for optimal charging performance and battery health. A LiFePO4 charger, for example, is engineered to charge lithium iron phosphate batteries and typically employs a three-stage charging technique: an initial constant current charge, a saturation topping charge at a constant voltage, and a ...

### China LiFePo4 Battery, Electric Vehicle Battery, ...

Jiangsu OptimumNano Energy Co., Ltd: We're known as one of the most professional LiFePo4 battery, electric vehicle battery, energy storage battery, solar battery, portable power station manufacturers and suppliers in China.



### [Optima ORANGETOP Lithium: The End to Dead ...](#)

Optima battery has finally entered the lithium age with a new color to show for it. The ORANGETOP series is a Lithium Iron Phosphate (LFP) chemistry starter battery that packs as much brain



## Contact Us

---

For catalog requests, pricing, or partnerships, please visit:  
<https://vdbconstruction.co.za>