

Photovoltaic panel capacity calculation





Overview

To calculate the capacity of photovoltaic panels, you can use the following formulas¹²³⁴: Determine the daily energy production requirement and divide it by the average daily sunlight hours. Account for panel derating to factor in efficiency losses. Use the solar power formula: $\text{output} = \text{solar panel kilowatts} \times \text{environmental factor} \times \text{solar hours per day}$. Calculate the required PV panel wattage using the formula: $\text{Required PV panel wattage (Watts)} = \text{Average Daily Energy Consumption (kWh)} / \text{Average Daily Sunlight Exposure}$.

Determine the solar panel capacity by dividing the daily energy production requirement by the average daily sunlight hours. Account for panel derating to factor in efficiency losses.

To find the solar panel output, use the following solar power formula: $\text{output} = \text{solar panel kilowatts} \times \text{environmental factor} \times \text{solar hours per day}$.

Step-3 Calculate required Solar Panel Capacity: Perform calculations using this formula- $\text{Required PV panel wattage (Watts)} = \text{Average Daily Energy Consumption (kWh)} / \text{Average Daily Sunlight Exposure}$.

How to Calculate Solar Panel kWh How do you calculate solar panel capacity?

Determine the solar panel capacity by dividing the daily energy production requirement by the average daily sunlight hours. Account for panel derating to factor in efficiency losses. Divide the actual solar panel capacity by the capacity of a single panel to determine the number of panels needed.

How do you calculate energy production per solar panel?

To calculate the energy production per PV module, use the formula: $\text{Energy (kWh)} = \text{Area} \times \text{Solar panel yield} \times \text{Annual average solar radiation on panels} \times \text{Performance Ratio}$ The performance ratio (PR) is typically a default value of 0.75, but BONJOUR SOLAR Solar Panels can reach up to 0.85 for higher efficiency.

What is a solar panel size calculator?



Their solar panel size calculator tool makes it easier to determine the best PV system for your home by collecting household data and system preferences. Solar Calculator provides useful data by estimating storage requirements and surplus energy availability.

How to calculate solar panel output?

To find the solar panel output, use the following solar power formula: $\text{output} = \text{solar panel kilowatts} \times \text{environmental factor} \times \text{solar hours per day}$. The output will be given in kWh, and, in practice, it will depend on how sunny it is since the number of solar hours per day is just an average. How to calculate the solar panels needs for camping?

.

How do you calculate solar energy consumption?

Divide the actual solar panel capacity by the capacity of a single panel to determine the number of panels needed. For example, if your average daily energy consumption is 30 kWh and the system efficiency is 80%, and you have an average of 5 hours of sunlight per day, you would calculate your daily energy production requirement as follows:.

What is a solar panel capacity?

The solar panel capacity shows how much power a panel can make when the sun's shining the brightest. It's measured in watts-peak (Wp). That's like its top power when it's working super well. It helps know how much electricity you might get from the panel.



Photovoltaic panel capacity calculation



How to Calculate the Surface Area Required by Solar Panels

With the bright light conditions and the efficiency as measured, calculate the size of solar panel required to power: If your panel efficiency is 16%, will produce 160 ...

How to Design and Install a Solar PV System?

Suppose, in our case the load is 3000 Wh/per day. To know the needed total W Peak of a solar panel capacity, we use PFG factor i.e. Total W Peak of PV panel capacity = $3000 / 3.2$ (PFG) ...



Energy storage(KWh)
102.4kWh
Nominal voltage(Vdc)
512V
Outdoor All-in-one ESS cabinet



Calculate Solar Panel kWp & KWh (KWh Vs. KWp

Put simply, kWp is the peak power capability of a solar panel or solar system. The manufacturer gives all solar panels a kWp rating, which indicates the amount of energy a panel can produce at its peak performance, ...

Understanding Solar Photovoltaic System Performance

represent a total capacity of 30,714 kW and range in size from 1 kW to 4,043 kW, with an to calculate predicted performance. The performance metrics are calculated by aligning the



Highvoltage Battery



[Solar Panel Power Calculator](#)

Solar Panel Calculator is an online tool used in electrical engineering to estimate the total power output, solar system output voltage and current when the number of solar panel units ...



How To Calculate Solar Panel To Charge Battery: A Step-by-Step ...

Discover how to effectively calculate the solar panel size necessary for charging batteries with our comprehensive guide. Learn the fundamentals of solar energy, ...



Calculation & Design of Solar Photovoltaic Modules ...

When we connect N-number of solar cells in series then we get two terminals and the voltage across these two terminals is the sum of the voltages of the cells connected in series. For example, if the of a single cell is 0.3 V and 10 such ...





Solar Capacity Factor: Why It is Important?

You need to have five solar panels to generate the power equivalent to one solar panel. That is why a low capacity factor is a major problem in solar technology. With a ...



How to calculate the annual solar energy output of a photovoltaic ...

r is the yield of the solar panel given by the ratio : electrical power (in kWp) of one solar panel divided by the area of one panel. Example : the solar panel yield of a PV module of 250 Wp ...

How to Calculate Solar Panel Efficiency

This article explores how to calculate solar panel efficiency, emphasizing its importance alongside other factors like cost, durability, and warranty in selecting solar panels. ...



The Solar Panel and Battery Capacity Calculator

Why we design this solar panel and battery capacity calculator? We have designed a solar panel and battery capacity calculator to help people calculate how many ...



The Complete Guide to Calculating Solar Panel Needs

Solar Panel Calculation. Calculating the number of solar panels needed for a home is not a one-size-fits-all process. Each home has unique power requirements, which depend on various ...

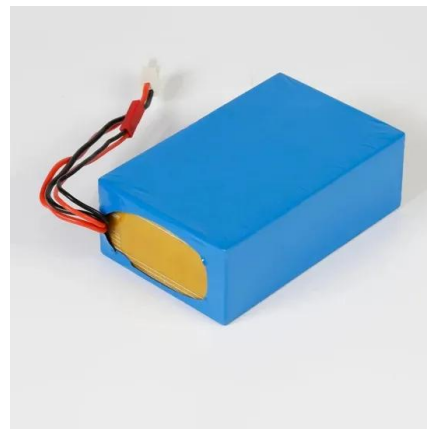


[How to Calculate Solar Panel KWp \(KWh Vs. KWp\)](#)

Calculating the KWp rating or kilowatts peak rating of a solar panel is essential for determining its peak power output. KWp represents the panel's maximum capacity under ideal conditions. In this comprehensive ...

How to Calculate the Installed Capacity of Your Home ...

Step 3: Calculate the Number of Panels. With the required system capacity determined, divide it by the capacity of each panel. For instance, if your calculated system capacity is 5kW and each panel has a capacity of ...



Solar Power Calculator and Battery Design Estimator , Enphase

The solar panel and storage sizing calculator allows you to input information about your lifestyle to help you decide on your solar panel and solar storage (batteries) requirements.



Solar Panel Calculator

Solar Panel Installation Costs: The Solar Panel Installation Costs range approximately from \$0.75 to \$1.25 per watt. With the help of a solar panel cost calculator, you can easily figure out the ...

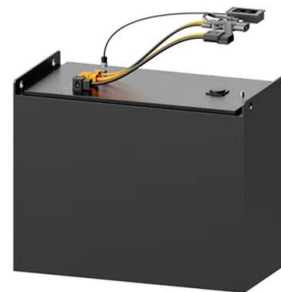


How to calculate Solar Panel, Battery and Inverter?

When you plan to install solar panel, battery and inverter, then you must be wondering about how to decide the capacity of these components. On the basis of our practical experience, below guide will help you. Step 1: ...

How Many Solar Panels Do You Really Need for UK ...

To determine the number of solar panels you need, start by analyzing your household's average energy consumption. Then, consider the solar panel efficiency, sunlight availability, and your geographical location to calculate the ...



The Ultimate Guide To Solar Panel Calculation

Solar panel calculation involves understanding the size, type, and other crucial factors related to solar power panels. In this Jackery guide, we will reveal how you can ...



[Solar Energy Calculator and Mapping Tool](#)

For example, if you have 9 panels each with a capacity of 500 Watts, you would enter 4.5. (9 panels x 500 Watts = 4500 Watts, which is 4.5 kilowatts) The result of the photovoltaic energy calculation is the average monthly energy ...



A Complete Guide on Solar Panel Calculations (2023 Update)

Best Solar Panel Sizes and Wattage Calculator
This curated list includes top-brand calculators for determining panel size, output and battery capacity for your system along with wattage estimates for monthly and yearly ...

59 Solar PV Power Calculations With Examples Provided

Determines the capacity of the PV system needed to meet a specific energy demand. $S = D / (365 * H * r)$ S = size of PV system (kW), D = total energy demand (kWh), H = average daily solar radiation (kWh/m²/day), r = PV panel ...



How To Calculate Solar Panel And Battery Size For Your Energy ...

Unlock the secrets to effectively calculating solar panel and battery sizes with our comprehensive guide. This article demystifies the technical aspects, offering step-by-step ...





The Complete Guide to Calculating Solar Panel Needs

To calculate the energy production per PV module, use the formula: Energy (kWh) = Area × Solar panel yield × Annual average solar radiation on panels × Performance Ratio. The performance ratio (PR) is typically a default value of ...



Solar Panels Ireland Cost Calculator [2025 Version]

Easy to use solar pv calculator that shows you the roof space needed, effects of panel orientation and roof slope, and even the difference between the counties of Ireland. hello@purevolt.ie 091 ...

Contact Us

For catalog requests, pricing, or partnerships, please visit:
<https://vdbconstruction.co.za>