

# Photovoltaic panel circuit parallel diagram





## Overview

---

A Solar Photovoltaic Module is available in a range of 3 WP to 300 WP. But many times, we need power in a range from kW to MW. To achieve such a large power, we need to connect N-number of modules in series and parallel. A String of PV Modules When N-number of PV modules are connected in series. The entire.

Sometimes the system voltage required for a power plant is much higher than what a single PV module can produce. In such cases, N-number of PV modules is connected in series to.

Sometimes to increase the power of the solar PV system, instead of increasing the voltage by connecting modules in series the current is increased by connecting modules in parallel. The current in the parallel combination of the.

When we need to generate large power in a range of Giga-watts for large PV system plants we need to connect modules in series and parallel. In large PV plants first, the modules are connected in series known as “PV module.

Can a 12V solar panel be connected parallel?

Only the same rated solar panel can be connected in series, parallel or series parallel connection. A 12V solar panel can only be connected in (series, parallel or series-parallel) with another 12V solar panel. A 12V solar panel should not be connected (in series, parallel or series parallel) to a 6V or 24V solar panel.

What is a solar panel wiring diagram?

A solar panel wiring diagram (also known as a solar panel schematic) is a technical sketch detailing what equipment you need for a solar system as well as how everything should connect together. There’s no such thing as a single correct diagram — several wiring configurations can produce the same result.

What is the difference between parallel wiring and a solar panel?

The right answer depends on the number of PV modules, the planned layout, and your electricity generation goals. So, what’s the difference?



Parallel wiring increases the sum output amperage of a solar panel array while keeping the voltage the same. The choice you make can have a significant impact on your system's overall performance.

How to connect 4 solar panels in parallel?

For parallel connection, please connect the positive and negative cables of one module and the second module correspondingly. A parallel connection between 4 solar panels could quadruple the amperage. Voltage and wattage output remain the same. If you're worried about the current being too low, consider wiring the four PV panels in parallel.

Should I wire my PV panels in series or parallel?

If you're worried about the current being too low, consider wiring the four PV panels in parallel. With a four-panel array, there's no benefit to wiring it in series-parallel. Whether you opt for series or parallel, you'll require additional cables.

Can a 400W solar panel be connected in parallel?

If you connect more than one or two 400W portable solar panels in series, the total output voltage will exceed 12V, and you'll blow a fuse (at best). However, many grid-tied and off-grid residential solar power systems require high voltage, which can't be achieved by wiring in PV modules in parallel.



## Photovoltaic panel circuit parallel diagram

---

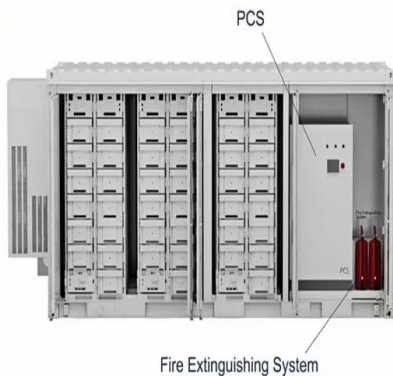


### How to Wire Two or More Solar Panels in Parallel

We will also explain the difference between a parallel connection of two or more identical solar panels and a parallel connection of two or more solar panels with different technical ...

### How To Wire Solar Panels In Series vs Parallel (For Beginners)

Learn how to wire your solar panel kits in both series and parallel circuits by watching this video! We're going to show you step-by-step how to connect your



### Solar panel wiring basics: How to wire solar panels

Solar panel wiring is a complicated topic and we won't delve into all of the details in this article, Stringing solar panels in parallel (shown in the diagram above) is a bit more complicated. it ...

### Step-by-Step Guide: Wiring Your PV Combiner Box - Diagram ...

It provides a clear and systematic guide for wiring connections, fusing, and grounding. Following the diagram will help ensure the safety, efficiency, and long-term performance of your solar ...

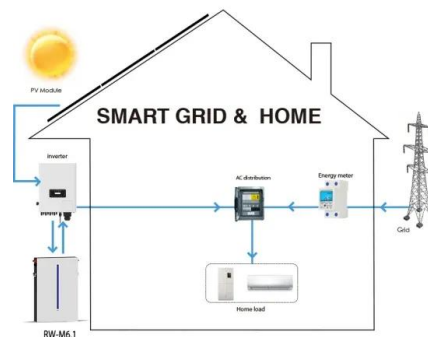


### Connecting Solar Panels in Series or in Parallel?

Parallel wiring increases the sum output amperage of a solar panel array while keeping the voltage the same. The choice you make can have a significant impact on your system's overall performance. For the purposes of ...

### 12V Solar Panel Wiring Diagram: Step-by-Step Installation Guide

Learn how to wire a 12V solar panel system with this straightforward wiring diagram and step-by-step guide. Wiring a 12V solar panel typically involves connecting the positive and negative ...



### Solar Panel Wiring: Step-by-Step Installation Guide

Parallel Circuit: When solar panels are wired in parallel, the voltage remains the same while the current is additive across the panels. This is typically used to increase the system's current ...



## How to Connect Solar Panels in Series and Parallel

Absolute interconnected power =  $150W + 150W + 150W + 150W = 600W$ . Having said that when panels are attached in series, one of the panel may carry a rated power ...



## Solar Panel Wiring Diagram for All Setups [+ PDFs] - Solartap

12V Solar Panel to Battery Wiring Diagram (in Parallel) 12V is the most common solar panel wiring connection with batteries, as most appliances are designed to operate on ...



## How To Fuse a Solar Panel Array (With Diagrams)

A short circuit in a solar panel happens when the solar panel becomes faulty and does not produce any more electricity from the sun. If a solar array is wired in parallel, a single faulty solar panel can lead to a fire because ...



## [9 Simple Solar Battery Charger Circuits](#)

8) Solar Panel Buck Converter Circuit with Over Load Protection. The 8th solar concept discussed below talks about a simple solar panel buck converter circuit which can be ...





## The Complete Guide to Solar Panel Wiring Diagrams

(Source: Electrical Technology) By combining parallel and series connections in a hybrid wiring configuration, you can address issues like shade and high voltage to maximize your electricity output and performance.. ...



Energy storage(KWh)

**102.4kWh**

Nominal voltage(Vdc)

**512V**

Outdoor All-in-one ESS cabinet

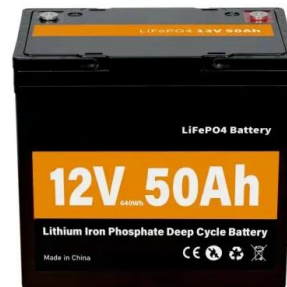


### How to connect a PV solar system to the utility grid

A junction box is added between the utility meter and the main service panel. Then the wires from the utility meter, the main breaker panel, and the PV solar are connected in the junction box. An adequately sized PV service disconnect ...

### 400 Watt Solar Panel Wiring Diagram & Kit List

The 4 diagrams below show a 400 watt solar panel wiring diagram wired in parallel and series with 2 x 200w and 4 x100w panel configurations. For a full breakdown of ...



### [Solar Panel Circuit Diagram With Explanation](#)

Solar panel circuit diagrams are a great way to understand how solar energy works. The diagram shows a basic setup of how photovoltaic (PV) cells absorb sunlight, convert it into electricity, and then allow for the ...



## Solar panel wiring basics: How to wire solar panels

In this article, we'll review the basic principles of wiring systems with a string inverter and how to determine how many solar panels to have in a string. We also review different stringing options such as connecting solar panels in series ...



### [Bypass Diodes in Solar Panels](#)

The equivalent circuit of a PV, shown on the left, is that of a battery with a series internal resistance,  $R_{INTERNAL}$ , similar to any other conventional battery. However, due to variations in internal resistance, the cell voltage and ...

### Equivalent circuit of a solar panel. , Download Scientific Diagram

Download scientific diagram , Equivalent circuit of a solar panel. from publication: Explicit Expressions for Solar Panel Equivalent Circuit Parameters Based on Analytical Formulation ...



### How to Wire Solar Panel & Batteries in Parallel

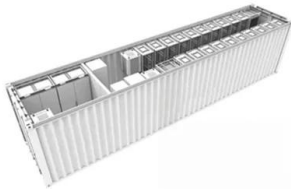
Sir, I have a solar system installed with inverter 1000W, solar panels 600w, 12w solar inverter hybrid 12v, battery one 12v 150ah, please advise /help may I add in parallel one more battery 12v 150 ah, to increase back up, NO harm to ...





## The Complete Guide to Solar Panel Wiring Diagrams

Connecting PV modules in series and parallel are the two basic options, but you can also combine series and parallel wiring to create a hybrid solar panel array. Some solar panels have microinverters built-in, which ...



## Solar Panel Wiring Guide

Practically speaking, when useable area is limited, a 22% efficient 300W solar panel could take up most of the available space, limiting the room for future panels and increasing the complexity of wiring, whereas it could be possible to ...

### Equivalent Circuit of Solar Cell

Additionally, you can represent device losses using equivalent circuit diagrams. In the above ideal circuit diagram of a solar cell, there are components which represent series resistance and ...



## Connecting Solar Panels in Series or in Parallel?

Yes, many large solar panel installations combine series and parallel wiring in one array to maximize the product of each group of panels. It's possible to strike the optimal ...



### Solar Panel Series Vs Parallel: Wiring, Differences, And Your Right

To wire your solar panels in series, simply link the positive MC4 connector of the first solar panel to the negative MC4 connector of the next one, and continue this pattern ...

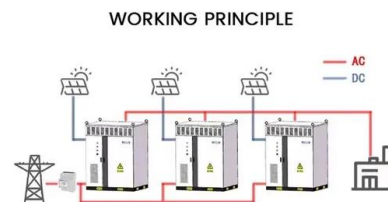


### 3-Phase Solar System Wiring Diagram: Step-by-Step Guide

Connect the solar panels to a combiner box, which consolidates the output of multiple panels into a single connection point. Install the appropriate combiner box for your system and make sure ...

### Theory of solar cells

The theory of solar cells explains the process by which light energy in photons is converted into electric current when the photons strike a suitable semiconductor device. The theoretical ...



### Solar Panel Wiring Basics: Complete Guide & Tips to ...

There is a solar panel wiring combining series and parallel connections, known as series-parallel. This connection wires solar panels in series by connecting positive to negative terminals to increase voltage and ...



## Solar Photovoltaic (PV) System Circuit Protection ...

A typical Solar Panel achieves between 15% and 20% efficiency conversion. As these conversion ratios continue to improve and the size of PV systems grow, it is important to ensure that circuits are protected from overcurrents to ensure ...



- LIQUID/AIR COOLING
- ON GRID/HYBRID
- PROTECTION IP54/IP55
- BATTERY /6000 CYCLES

## Blocking Diode and Bypass Diode for Solar Panels

Figure 1: Electrical diagram bypass diode used for solar panel. (multiple blockers may be necessary for redundancy in high stress applications or in parallel circuits, but in general they ...

## Series vs. Parallel

Learn about series, parallel, and series-parallel connections in solar panel systems. Understand why each connection type is used and how to set up your system accordingly. Discover the benefits and considerations of ...



## [How/When to Fuse a Solar Panel Array](#)

The diagram above shows 3x 200W panels wired in series. Each solar panel has a short circuit current of 10.2A, and operating current of 9.8A, and a Maximum Series Fuse Rating of 15A. ...





## Contact Us

---

For catalog requests, pricing, or partnerships, please visit:  
<https://vdbconstruction.co.za>