

Photovoltaic panel clamp installation tutorial diagram





Overview

Where should clamps be connected to the PV module?

When the mechanical load pressure is $\pm 2400\text{Pa}$, Clamps should be connected to the module between 400 and 500mm from the edge of the module. This distance is from the module edge to the middle of the clamp. *NOTE: We need two or three support rails below the PV module to make sure the module have a good mechanical load performance.

What is the clamp size for a PV module?

For framed PV module, the clamp must overlap the module frame at least 8 mm (0.32 inch) but no more than 11 mm (0.43 inch). The cross section of clamp can be adjusted if the module is securely fastened. For frameless PV module, the clamp must overlap the module frame at maximum 15 mm (0.59 inch).

How to install Trina Solar module with frameless clamps?

Please consult with a Trina Solar engineer before installing with the frameless clamps. Clamps should be connected to the module between 300 and 400 mm from the edge of the module. This distance is from the module edge to the middle of the clamp. *Note: Need two support rails below the PV module to make sure the Mechanical load.

How do I install a double glass PV module?

Insert the PV module into the clamp, and make sure the module edge touch to the EPDM closely and then tighten the nut with uniform torque values using a qualified torque wrench to ensure the double glass module is firmly secured. Trina suggests using M8 bolts to affix the double glass modules onto the clamp.

Which materials should be used to install photovoltaic modules?

JA Solar recommends that when installing modules at the seaside, stainless



steel or aluminum materials should be used to contact the photovoltaic modules, and the installation parts should be well protected from corrosion. The tilt angle of the modules is measured between the surface of the modules and a horizontal ground surface.

How do I mount a PV module to a substructure?

MOUNTING INSTRUCTIONS PV modules can be mounted to the substructure using either corrosion-proof M8 bolts placed through the mounting holes on the rear of the module or specially designed module clamps. A clearance of at least 115mm(4.5in) (recommended) is provided between modules frame and the surface of the wall or roof.



Photovoltaic panel clamp installation tutorial diagram



Installation Manual for LONGi Solar PV Modules

Installation Manual for LONGi Solar PV Modules. This manual elaborates on installation and safety use information for PV power generating modules (hereinafter referred to as module) of ...

JA SOLAR PV MODULES INSTALLATION MANUAL

A PV Module nstallation Manual 1 Introduction Thank you for choosing JA SOLAR modules! This Installation Manual contains essential information for electrical and mechanical installation that ...

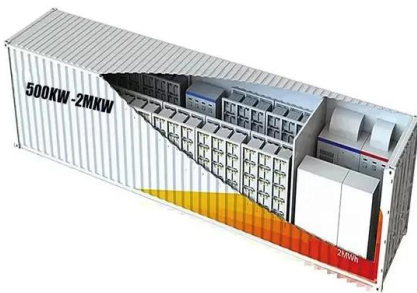


The Complete Guide to Solar Panel Wiring Diagrams

(Source: Electrical Technology) By combining parallel and series connections in a hybrid wiring configuration, you can address issues like shade and high voltage to maximize ...

INSTALLATION MANUAL

Insert the PV module into the clamp, and make sure the module edge touch to the EPDM closely and then tighten the nut with uniform torque values using a qualified torque wrench to ensure ...



Solar Panel Wiring Diagram: A Step-by-Step Guide

Solar panels are great to have, but they can be a bit confusing to install. The wiring diagrams are especially intimidating for those that don't know what they're looking at. To ...

[SunModo PV Rack Mounting System](#)

End Clamp Kit, fits panel height from 31 to 50 mm. For last 3 digits, see table on last page.
K10224-1XX Adjustable End Clamp Kit, fits panel height from 33 to 50 mm. Adjustable End ...



RESIDENTIAL INSTALLATION MANUAL HELIOCOL SOLAR POOL ...

7 6. Solar Panel Layout & Hydraulics. 12 7. Connecting the Solar Panels Together. 14 8. Mounting the Solar Panels Using Gator Clamps. 17 9. Mounting the Solar Panels On A Flat ...



Solar Panel End Clamps: Essential Components for ...

Solar panel end clamps are crucial components in the installation of solar panels. These clamps secure the panels at their edges, ensuring stability and optimal performance. The choice of end clamps can ...



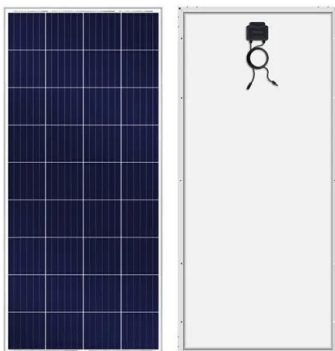
48V 100Ah

Solar Technical Drawings

Technical drawings showing installation of integrated solar PV and solar thermal panels in slate and tile roofs and solar thermal plumbing systems. Toggle navigation. About. PV16 - Solar ...

Blocking Diode and Bypass Diodes in a Solar Panel Junction Box

Bypass Diode and Blocking Diode Working used for Solar Panel Protection in Shaded Condition. In different types of solar panels designs, both the bypass and blocking ...



Architectural Drawings for Solar Photovoltaic Systems

In addition, the homeowner should be provided with a one-line electrical riser diagram of the PV system components. The diagram should have sufficient detail to clearly identify: Confirm ...



The Ultimate Solar Panel System Schematic Diagram: A ...

A solar panel system schematic diagram is a visual representation of how the different components of a solar panel system are connected to each other. It shows how solar panels, ...



Solar Panel Installation Guide: Step-by-Step Process and Tips

Solar panels are mounted onto the roof or ground racks using clamps. The angle of the panels is crucial for maximizing energy production. Wiring and Inverter ...

Planning and installing consumption monitoring

Follow all safety and installation instructions in the Enphase Envoy-S Installation and Operation Manual. If the main electrical meter is installed in a separate enclosure from the main service ...



Step-by-Step Guide to Understanding Solar Panel Wiring Diagrams

These are just a few examples of the types of solar panel systems available. The choice of system depends on factors such as location, energy needs, budget, and aesthetic ...



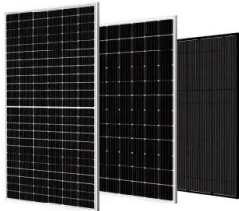
Installation Overview & Single-Line Diagrams

One is with only PV and the other is with a battery, a Solis ATR, and a backup loads panel. Note: these diagrams are to just to use for reference and not to submit for a building permit Single ...



Solar Panel Fixing Options

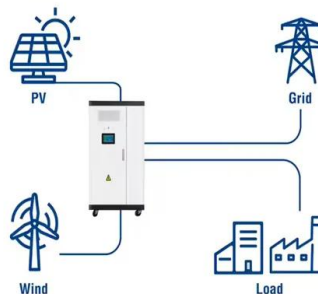
Here is a piece on Solar Panel Fixing Options built to help Developers, Contractors, Architects, and Homeowners grasp what's on offer for fixing PV panels. There are several different types of clamps; some allow you to ...



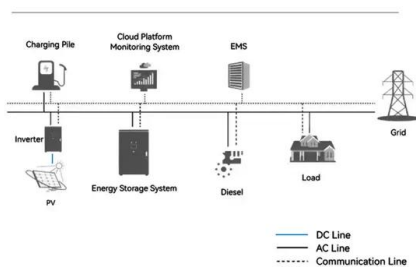
Everything You Need To Know About Solar Panel ...

Solar Panel Information Every solar panel will come with a datasheet that outlines the maximum power voltage, power current, and the peak power of the module. When designing your system, choosing a panel that will work with the system ...

Utility-Scale ESS solutions



System Topology



GSE IN-ROOF SYSTEM

(GSE panel support) Roof underlay Top of the PV field Bottom of the PV field Overall presentation of the installation of the kit: Positioning of the support battens GSE frames installation ...



Klip-lok roof solar mounting system installation manual

Determine the appropriate installation area on the roof. Make sure the installation area to be center over the roof as much as possible. locate the row positions for Klip-lok clamp and mark ...



INSTALLATION MANUAL

Insert the PV module into the clamp, and then tighten the nut. M8 ss304(16N·m~20N·m)
*NOTE: Test the installation of the bolt torque on a regular basis. 6.4 TRINA CLAMP COMPATIBILITY ...

INSTALLATION GUIDE FOR PHOTOVOLTAIC (PV) MODULES

All modules come with a permanently attached junction box and #12 AWG wire terminated in connectors. Renogy can provide customers with fitted cables for ease of installation, if desired. ...



[How to Design and Install a Solar PV System?](#)

Suppose, in our case the load is 3000 Wh/per day. To know the needed total W Peak of a solar panel capacity, we use PFG factor i.e. Total W Peak of PV panel capacity = $3000 / 3.2$ (PFG) ...



[SunModo PV Rack Mounting System](#)

Portrait End Clamp Kit, fits panel height from 31 to 50 mm. For last 3 digits, see table on last page. K10224-1XX K10224-1XX-BK Universal End Clamp Kit, fits panel height from 33 to 50 ...



Understanding Solar Panel Diagrams: A Detailed

Solar panel diagrams are an essential tool for both the installation and maintenance of solar panel systems. These diagrams provide a visual representation of how the panels are connected and how the energy flows ...

[How to Connect Diode to Solar Panel](#)

Now that you know the basics of diodes let's take a look at how to connect a diode to a solar panel. Step One: Install Your Solar Panels. The first thing you need to do is ...



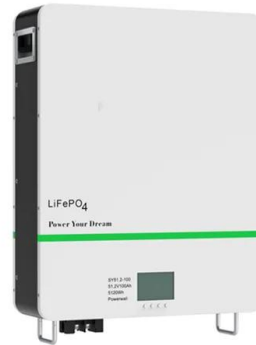
How to Design a Solar Pump System: A Step-by-Step Tutorial

Mounting: Securely mount the PV combiner box close to the solar panels.. Connections: Connect the positive and negative terminals of the solar panels to the ...



1. General Information

Solar PV modules usually can be mounted by using the following methods: bolts and clamps. *
Note: 1) All installation methods herein are only for reference, and Jinko solar will not provide ...



[How to Mount Solar Panels , AltE Store](#)

Solar panel mounts and racks are specialized equipment systems used to install solar panel arrays in a secure, stable position. Solar panel arrays can be mounted in many ways: on ...

Contact Us

For catalog requests, pricing, or partnerships, please visit:
<https://vdbconstruction.co.za>