

# Photovoltaic panel installation quantity and area





## Photovoltaic panel installation quantity and area

### [Solar Panel Sizes & Dimensions UK \(2024\)](#)



Many solar panel companies make small solar panels designed specifically for small roofs. You can also opt for high-efficiency solar panels that have conversion rates as ...

### A Guide on Calculating Area Required for Solar Panel Installation

How much space do I need to reserve on my rooftop or the ground for the panel installation? The installation area of the solar panel is also based on whether you need rooftop ...



#### OEM service

Hot Colors:



Color can be customized  
more questions just do not hesitate to contact us

LOGO Position: (Screen printing)



### A Full Guide to Photovoltaic Panel Installation and Maintenance

When evaluating a site for solar panel installation, it's essential to consider local regulations and building codes that can impact the feasibility of the project. Even partial ...

### [How To Calculate Solar Panel Output?](#)

If you want to calculate the solar panel output per year, you should refer to the formula given below-  $E = A * r * H * PR$ . In this formula, E = Energy (kWh) A = Total solar ...



### Spatial layout optimization for solar photovoltaic ...

Spatial layout of solar PV panels (a) 99.8% coverage with  $p = 26$ ; (b) 79.7% coverage with  $p = 15$ . 325 Figure 6 shows the coverage achieved based on the four different alignment scenarios.



### Executive Summary

Therefore, the roof area ° suitable for PV installation is estimated at around 25.7 km. 2 . 5. utilisation factor, it is estimated that the PV panel area in Hong Kong is around 3.246 - 5.010 ...




-  Extreme Light Weight
-  Extended Cycle life
-  Low Self Discharge
-  Superior Cranking Power
-  Completely Sealed
-  Environmental

### [How to Design and Install a Solar PV System?](#)

Suppose, in our case the load is 3000 Wh/per day. To know the needed total W Peak of a solar panel capacity, we use PFG factor i.e. Total W Peak of PV panel capacity =  $3000 / 3.2$  (PFG) = 931 W Peak. Now, the required number of PV ...



### 59 Solar PV Power Calculations With Examples Provided

For example, a PV panel with an area of 1.6 m<sup>2</sup>, efficiency of 15% and annual average solar radiation of 1700 kWh/m<sup>2</sup>/year would generate:  $E = 1700 * 0.15 * 1.6 = 408 \text{ kWh/year}$



### A Complete Guide on Solar Panel Calculations (2023 ...

If you reside in an area that receives 5 hours of maximum sunlight and your solar panel has a rating of 200 watts, the output of your solar panel can be calculated as follows: Daily watt hours =  $5 \times 200 \times 0.75 = \dots$

### Solar Panel Pricing and Installation in Malaysia

If a business wanted to install 1MWp (1,000kWp) of solar panels on a warehouse with an area of about 8,900sqm, the total cost of solar panel installation would be ...



### How Many Solar Panels Do I Need in the UK? (November 2024)

The average home needs 8 to 13 panels for a 4kW system to cover its electricity needs (2,700kWh annually on average).; A 2 bedroom house requires 4 to 8 panels, a 3 ...



## INSTALLATION MANUAL FOR JA SOLAR PHOTOVOLTAIC ...

The mechanical and electrical installation of PV systems should be performed in accordance with all applicable codes, including electrical codes; building codes and electric utility interconnect ...



## Solar Panel Sizes and Wattage: A Comprehensive Guide to ...

A solar panel's size refers to the area it covers. The standard sizes for residential solar panels tend to be around 65 inches by 39 inches, while commercial variants ...



## Commercial and Industrial ESS

Air Cooling / Liquid Cooling

- Budget Friendly Solution
- Renewable Energy Integration
- Modular Design for Flexible Expansion



## Solar Rooftop Calculator: How Many Solar Panels Can ...

Such a big roof has 1500 sq ft of viable solar panel area. If each of these viable square feet generates 17.25 watts of electricity, the combined 1500 sq ft will be able to generate more than 25kW per peak sun hour ( 25.875kW, to be exact).



## Solar Calculator ? Sizing your PV-System , PV\*SOL

Valentin PV\*SOL ? Free Solar Panel Calculator (kWh Output) » How to do Solar Design? All information & Step by Step Instruction?. (001) 88451234; 88455438; PV Sol. Home; About ...



### How to calculate the annual solar energy output of a photovoltaic ...

r is the yield of the solar panel given by the ratio : electrical power (in kWp) of one solar panel divided by the area of one panel. Example : the solar panel yield of a PV module of 250 Wp ...



### Solar Panel Malaysia: Price of Installation [Updated 2023]

Read our article to discover all you need to know about solar panel installation and maintenance prices in Malaysia! When determining the size of your solar panel system, ...

### How to Calculate the Installed Capacity of Your Home ...

Number of Panels Needed:  $5000W (5 kW) / 500W = 10$  panels. Recommended Number of Panels: 10 panels -----Step 4: Assessing Your Roof Space. Measuring the available roof space is a crucial ...



### [How to Design a Solar PV System](#)

Additionally, consider the available space for panel installation and evaluate if the location is suitable for solar panel mounting. South-facing rooftops with minimal shading generally offer ...



### Spatial layout optimization for solar photovoltaic (PV) panel

When the suitable area is limited for PV panel installation, how to optimally design the spatial layout of multiple solar PV modules is critical for achieving maximal energy ...

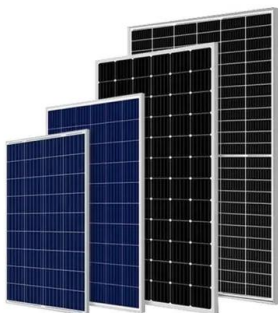


### How many solar panels do I need? Our guide to sizing up your ...

Find out how much solar panel installation could cost you by taking our quick survey below. How many solar panels does the average UK house need? The average ...

### Advances and prospects on estimating solar photovoltaic installation

The distribution position and quantity of PV can be framed by object detection. Semantic segmentation can extract each pixel represented as PV in the image and then ...



### [DIY Solar Panel Installation Guide](#)

DIY Solar Panel Installation is a great way to produce renewable energy and lower your energy bills. Read our guide on how to install solar panels yourself. keep the area around components clean and free of dust and you should get ...



### Solar Panel Sizes and Wattage Explained

How to Calculate Solar Panel Sizes and Wattage. When designing an efficient and cost-effective PV system for your house, this calculation is a must. You can perform it ...



### **Homeowner's Guide to Going Solar , Department of Energy**

Occasionally, a solar panel may break due to weather or other events. According to the International Energy Agency Photovoltaic Power Systems Technology Collaboration Program, ...

### **A Complete Guide to Optimizing Solar Output with ...**

Read this guide on how optimize solar panel layout based on tilt angle, orientation, and spacing. At the same time, excessive spacing may result in the need for more panels or a larger surface area for installation. ...



### **Standard Solar Panel Sizes And Wattages (100W-500W Dimensions)**

The average solar panel output per area is 17.25 watts per square foot. This just tells you that, if you have 500 sq ft of roof available for solar panels, you: Can easily install a 5kW solar ...





## Solar Panel kWh Calculator: kWh Production Per Day, Month, Year

How many kWh does this solar panel produce in a day, a month, and a year? Just slide the 1st slider to '300', and the 2nd slider to '5.50', and we get the result: In a 5.50 peak sun hour area, ...



## A Full Guide to Photovoltaic Array Design and Installation

A photovoltaic system consists of various components that work together to convert sunlight into electricity. The main components of a PV system include: Solar panels: ...

## Contact Us

For catalog requests, pricing, or partnerships, please visit:  
<https://vdbconstruction.co.za>