

Photovoltaic panel placement artifact





Photovoltaic panel placement artifact



Which Direction Solar Panels Should Face in South Africa

The closer a solar panel is located to the equator, the more it should point straight up towards the sky. This allows for optimal sunlight capture, as the sun's rays are at a ...

A Complete Guide to Optimizing Solar Output with Panel Layout

The solar panel performance depends on keeping the panels clean and in good condition, as well as actively monitoring for any potential issues that could affect their output. ...



[Solar Panel Placement Map \(Get Potential Map](#)

Things to consider before buying a solar panel Google Sunroof API . In 2015, Google launched Project Sunroof, an initiative that uses Google Maps data to help people see ...

[The Working Principle of Solar Panels](#)

The efficiency of a solar panel--that is, its ability to convert sunlight into electricity--is determined by several factors, including the quality of the silicon used, the ...



Calculate Your Optimal Solar Panel Tilt Angle

Maximizing Your Solar PV Output: Finding Your Ideal Solar Panel Tilt Angle The ideal angle to tilt your solar panels plays a vital role in maximizing their efficiency and output. This article aims ...



Sun Direction Maps: Your Guide to Optimal Solar Panel ...

How do I read a sun direction map for solar panel placement? ? Understand azimuth angle (compass direction of sunlight) and elevation angle (Sun's height). Use these to optimize solar panel angles and positions.



Photovoltaic Modules Diagnosis Using Artificial Vision ...

PV-module shape and determines the width and height of each panel by comparing the distance between boxes determined in the images and the real distances of the PV -module. 4.





Wind Forces on Ground-Mounted Photovoltaic Solar Systems: A ...

Abstract Computational fluid dynamics (CFD) simulation results are compared with design standards on wind loads for ground-mounted solar panels and arrays to develop ...

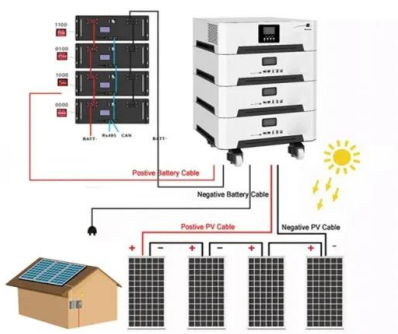


Solar Inverter Placement in Your Home

Conclusion. Proper placement of your solar inverter plays a vital role in the overall performance and longevity of your solar panel system. By choosing the right location and taking steps to protect your inverter from harsh ...

The best angle and direction for solar panels [UK, 2024]

In the case of most rooftop solar panel installations, the angle is determined by the roof - and fortunately, most roofs in the UK are angled at roughly 30 to 50 degrees. The ...



Solar Panel Placement: How to choose the best location

Solar panel placement is an important factor that affects the performance and output of your solar PV system. By choosing the optimal direction and angle for your solar panels, you can maximize their exposure to ...



(PDF) Spatial layout optimization for solar ...

Spatial layout of solar PV panels (a) 99.8% coverage with $p = 26$; (b) 79.7% coverage with $p = 15$. 325 Figure 6 shows the coverage achieved based on the four different alignment scenarios.

INTEGRATED DESIGN
EASY TO TRANSPORT AND INSTALL,
FLEXIBLE DEPLOYMENT



Best Angle for Solar Panels: It's Not Your Latitude

1. Our Solar Panel Tilt Angle Calculator. Because the research paper's formulas offer a slight improvement over latitude, a friend and I decided to code a free solar panel angle ...

A guide for where to place your solar panels , Geo ...

Monocrystalline solar panels are made from a single silicon crystal and tend to be more expensive but convert 15-24% of sunlight. Panel efficiency can impact the number of panels needed for your system and ...



What's the Right Roof Placement for Solar Panels?

Solar panels can provide numerous benefits when installed on flat roofs, including: Flat roofs provide a large, unobstructed area for solar panel placement, allowing for maximum solar ...



Best Angle & Direction For Solar Panels in the UK , Glow Green

What Is Solar Panel Angle And Direction? What is meant by 'solar panel angle?' ?. The 'solar panel angle' refers to the tilt angle of the panels relative to the ground which ...



Impact of solar PV on aviation and airports

The FAA guidance on this topic states: solar PV employs glass panels that are designed to maximize absorption and minimize reflection to increase electricity production efficiency. To ...

The best angle and direction for solar panels [UK, 2024]

The key to maximising your solar electricity production lies in strategic panel placement. The best spot for solar panels in the UK is a roof that faces south and has a tilt of about 35 degrees. But remember, these are just ...



Solar Panel Orientation and Tilt

Expert Insights From Our Solar Panel Installers About Solar Panel Orientation and Tilt Proper orientation and tilt are pivotal for maximizing energy production from solar panels. South ...





The Ultimate Guide to Solar Panel Roof Mounts: Installation and

By optimizing panel placement and orientation, incorporating energy storage systems, and taking advantage of incentives and rebates, you can make the most of your solar ...



Solar panel inclination angle, location and orientation

Any implementation of a sustainable photovoltaic solar energy system implies the optimization of the resources to be used. Therefore, it is the basis for the design and assembly of solar installations to optimize renewable ...

Performance enhancements and modelling of photovoltaic panel

The growing focus on solar energy has led to an expansion of large solar energy projects globally. However, the appearance of shades in large-scale photovoltaic ...



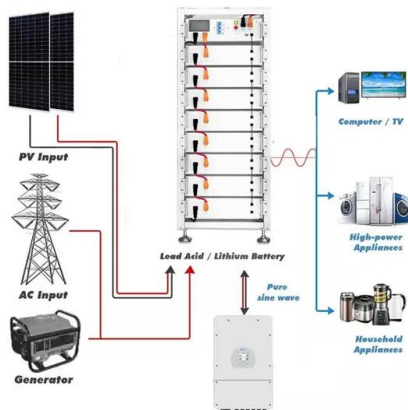
Solar Panel Placement: Science Behind Optimal Orientation

Optimal solar panel placement is a blend of science, mathematics, and practical considerations. By positioning your panels to capture the most sunlight and adjusting their ...



Optimize Solar Panel Placement for Peak Performance

Understanding and applying basic principles of solar panel placement can significantly enhance solar panel efficiency and the amount of electricity your system ...



Harnessing the Sun's Power: The Science Behind Solar Panel Placement

By optimizing solar panel placement and ensuring they are properly exposed to sunlight, homeowners can maximize the potential energy generation of their solar panel ...



ESS



OpenSolar 3D Design: Fast and Accurate Solar Proposals

The most accurate solar design tool available, with full 3D modeling and automation, now also includes: Ability to design and sell commercial systems; Global HD imagery coverage with 3D, 2D or custom properties; Built-in ...



A Full Guide to Solar Panel Placement and Installation

The cost of solar panel placement will depend on a number of factors, including the type of system you choose, the size of your home, and the location of your property. Let's dive into more on each of the factors: Type of ...



Contact Us

For catalog requests, pricing, or partnerships, please visit:
<https://vdbconstruction.co.za>