

# Photovoltaic panel plane size





## Overview

---

Three main PV solar panel types are monocrystalline, polycrystalline, and thin or flexible film. Find the answer to the question, how big are solar panels?

.

Apart from knowing how to install a solar panel, there are several factors to consider when choosing a solar panel size.

Recognising the advantages and disadvantages of solar panel size is important in understanding photovoltaic vs solar panels. Continue.

Regardless of how big solar panels are, they comprise a series of single solar cells, all connected in parallel circuits to form the entire solar system. Of course, how many solar panels.

What is a typical solar panel size?

Most residential solar panels' standard size range from 65 by 39 inches, or 17.3 square feet, to 78 inches by 39 inches, or 20.5 square feet. Average solar panel size — large or small solar system size — is available to produce different levels of energy output.

What is a photovoltaic (PV) solar panel?

This solar panel is a photovoltaic (PV) panel that offers several advantages over the standard solar panel size, making them a good alternative. Some of the benefits of this solar panel type include: Sleek weight and flexibility – because of its weight, this solar panel is easier to install in different locations.

What are the dimensions of a residential solar panel in the UK?

The typical dimensions of a residential solar panel in the UK is 189cm x 100cm x 3.99cm (length, width and height) Solar panel weight is a crucial factor to consider when planning a rooftop solar installation. The weight of the panels, along with the mounting equipment, adds a significant load to your roof structure.



How much do solar panels weigh?

Standard residential solar panels weigh between 40 to 50 pounds (18 to 23 kg). How big are solar panels means that a typical solar panel system for a home has several hundred pounds weight, depending on the number of solar panels installed. Considering how much solar cells weigh when planning for home or commercial panels installation is important.

How big is a 96 cell solar panel?

96-cell solar panel size. The dimensions of 96-cell solar panels are as follows: 41.5 inches long, and 63 inches wide. That's a 63×41.5 solar panel. This form is a bit shorter but wider. This is the typical classification of solar panel sizes (based on the solar cell size). It's a bit theoretical and quite useless for most calculations.

Do solar panels come in different sizes?

Yes, many solar panel sizes are available on the market, and they can vary depending on the types of solar panels and the manufacturers. Most residential solar panels' standard size range from 65 by 39 inches, or 17.3 square feet, to 78 inches by 39 inches, or 20.5 square feet.



## Photovoltaic panel plane size

---



### Understanding Solar Photovoltaic System Performance

POA Plane of Array . PV photovoltaic . SAM System Advisor Model . TWC The Weather Company . USACE U.S. Army Corps of Engineers . represent a total capacity of 30,714 kW ...

### Solar Panel Wiring Basics: Complete Guide & Tips to Wire a PV ...

This includes conductor size and overcurrent devices. This is calculated by oversizing the Short Circuit Current (Isc) by 125%, All solar panel strings connected in ...



### Analysis of mechanical stress and structural deformation on a solar

The above discussion of pressure coefficients has been described with a geometrical view in Fig. 2 where d stands for the distance between the top and the bottom ...

### Guide to Solar Panel Sizes & Dimensions (November 2024)

Discover which solar panel sizes and dimensions are the most common in the UK, as well as which size is the best for your home. 0330 818 7480. Become a Partner. Menu. ...



### Solar panel sizes and wattages , The Independent

\*Based on the average UK sunlight hours of 4.3 per day across all 12 months in 2023 with a 0.75x modifier to account for variables such as suboptimal panel orientation, low ...



### Balancing Solar Energy Generation and Pilot Safety at ...

When the solar panels were arranged with an azimuth of 180°, glare towards the flight paths of approaching aircraft was predicted. Changing the azimuth of the panels along the western runway from 180° to 225° eliminated ...



### Solar Panel Size Calculator: What Size Panel Do I Need?

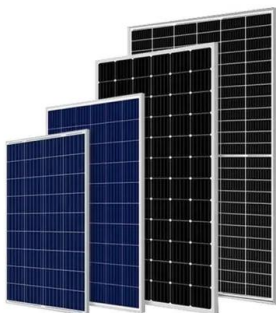
Summary. You need around 200-400 watts of solar panels to charge many common 12V lithium battery sizes from 100% depth of discharge in 5 peak sun hours with an ...





### Solar Panel Orientation and Positioning of Solar Panel

For a fixed solar installation, it is preferred that the PV panels are installed with a centralised tilt angle representing the vernal equinox, or the autumnal equinox, and in our example data ...



### Sizing Solar Structure Components in Solar Panel Design

One of the most important ways to combat climate change and the global energy issue is by promoting the use of solar energy. About 80% of the energy required to ...

### Solar Cell Size: The Ultimate Guide to Choosing the Right One for ...

Average Area of a Single Solar Panel. A single solar panel box generally spans between 12 to 18 square feet, depending on its intended energy output. Factors That ...



### Photovoltaic panels tilt angle optimization

The tilt angle (elevation angle) represents the angle formed by the horizontal plane of the installation and the PV panels for a fixed structure [85,89]. For roof top solar panel installations



## Solar Panel Building Regulations & Planning Permission

Solar panel building regulations. panels are kept below 200mm perpendicular protrusion from the plane of the roof or wall In addition, if the system size exceeds 3.68kWp an application ...

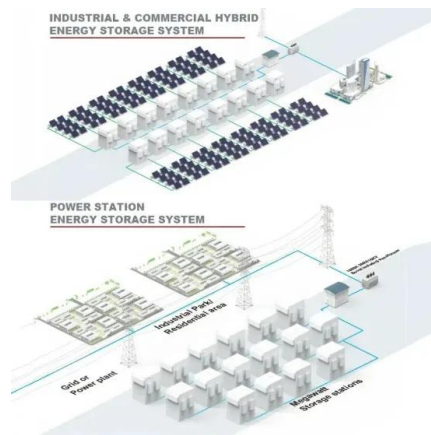


### [Complete guide to solar panel size](#)

Solar panel efficiency, output, a good warranty, and a trusted brand are more important than focusing on solar panel size. How to measure solar panel size Residential solar panels usually ...

### [Solar Energy Calculator and Mapping Tool](#)

These solar panels correspond to the majority of rooftop-installed solar panel technology. PVGIS does not differentiate between polycrystalline and monocrystalline cells. which include ...



### [Solar Panel Sizes and Wattage Explained](#)

Solar Panel Size. It focuses on maximum electricity generation and overall capacity rather than the quantity of panels. To calculate the required system size, multiply the ...



### Solar Panel Sizes & Dimensions UK (2024)

Many solar panel companies make small solar panels designed specifically for small roofs. You can also opt for high-efficiency solar panels that have conversion rates as ...



### **Photovoltaic panels: operation and electrical production**

Example calculation: How many solar panels do I need for a 150m<sup>2</sup> house ?. The number of photovoltaic panels you need to supply a 1,500-square-foot home with ...

### Solar Panel Dimensions Sizes and Wattage

The size of a 300w solar panel A 300w solar panel is generally a popular choice for residential applications and small commercial systems thanks to its balance of performance ...



### **Solar Panel Angle: how to calculate solar panel tilt angle?**

The solar panel angle of your solar system is different depending on which part of the world you are. Solar panels give the highest energy output when they are directly facing ...





### Solar panel inclination angle, location and orientation

Any implementation of a sustainable photovoltaic solar energy system implies the optimization of the resources to be used. Therefore, it is the basis for the design and assembly of solar installations to optimize renewable ...



### Rooftop segmentation and optimization of photovoltaic panel ...

Rooftop photovoltaic panels (RPVs) are being increasingly used in urban areas as a promising means of achieving energy sustainability. Download: [Download full-size ...](#)



### 59 Solar PV Power Calculations With Examples Provided

46. Solar Panel Life Span Calculation. The lifespan of a solar panel can be calculated based on the degradation rate:  $L_s = 1 / D$ . Where:  $L_s$  = Lifespan of the solar panel (years)  $D$  = ...



### Photovoltaic System

The size of the Photovoltaic Kit for residential installation is as from 1 KW till 3.5 KW as established by the CEB. Panels. Our PV Panels are of 310 Watts capacity as referred in the ...





### Impact of solar PV on aviation and airports

The FAA guidance on this topic states: solar PV employs glass panels that are designed to maximize absorption and minimize reflection to increase electricity production efficiency. To ...



### **Structural optimization and performance testing of concentrated**

The CPP adopts the multi-cell large panel shown in Fig. 4, with a plane length and width of 540 mm × 540 mm, an equivalent foundation depth expanding downward by 3 m, ...

### **A Comprehensive Solar Panel Size Chart: Find the ...**

Learning about different solar panel types, like 60-cell, 72-cell, and 96-cell, is key to optimizing solar panel efficiency. When you match the system size with your energy needs and consider the climate, you make smart ...



## **Contact Us**

---

For catalog requests, pricing, or partnerships, please visit:  
<https://vdbconstruction.co.za>