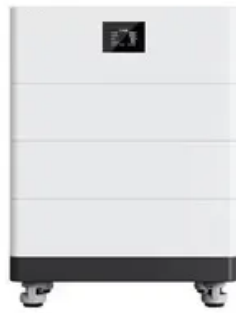


Photovoltaic panel size specifications diagram





Overview

What is the size of a solar panel?

The size of a solar panel is measured in watts, which indicates the amount of power it can generate. The most common solar panel sizes for residential installations are between 250W and 400W, while larger commercial installations may use panels up to 500W or more.

What are the dimensions of a residential solar panel in the UK?

The typical dimensions of a residential solar panel in the UK is 189cm x 100cm x 3.99cm (length, width and height) Solar panel weight is a crucial factor to consider when planning a rooftop solar installation. The weight of the panels, along with the mounting equipment, adds a significant load to your roof structure.

How much does a solar panel weigh?

Most home solar panels are about 5.5 feet x 3 feet and weigh roughly 40 pounds each. Most of the time, you won't see the size of solar panels expressed in feet. Instead, you'll see it's listed as the number of solar cells within a panel, with the most common solar panel sizes being 60-cell and 72-cell.

What size solar panel do I Need?

The most common solar panel sizes for residential installations are between 250W and 400W, while larger commercial installations may use panels up to 500W or more. The size of a solar panel affects its efficiency, with larger panels generally being more efficient but also more expensive and heavier.

How do I choose the right solar panel size?

The size of a solar panel should be chosen based on factors such as available space, energy needs, and budget. Solar panels can be combined to create larger systems, and the size of the system will depend on the energy needs of



the user. Choosing the right size of the solar panel is important for maximizing energy production and cost savings.

What is a solar panel wattage?

A solar panel's wattage determines how much energy your system can generate, while a solar panel's dimensions inform how many you can fit onto your roof. Both can vary significantly from panel to panel depending on: The type of solar panel. There are three main types of solar panels, each with their own wattage range.



Photovoltaic panel size specifications diagram



How to Set Up a 24 Volt Solar System , A Complete Guide

A 24 volt solar system uses multiple solar panels wired in series to produce a higher DC voltage output around 24V. This 24V DC electricity is stored in batteries and ...

Solar Panels Dimensions & Drawings , Dimensions

Solar panels, also known as photovoltaic (PV) cells, are devices that convert sunlight directly into electricity. Each panel is made up of many small cells that capture sunlight and, through a process called the ...



800 Watt Solar Panel Wiring Diagram & Kit List

The first 2 diagrams below show an 800 watt solar panel wiring diagram wired in parallel and series with 4 x 200w panel configurations. The 3rd diagram shows an 800 watt setup wired in a combination of parallel and series ...

[Solar Panel Sizes & Wattage](#)

Transitioning to solar energy for your office requires understanding industrial solar panel sizes, influenced by wattage needs, solar cell types, and materials. Larger commercial solar panels offer higher wattage but need more space, while ...



[Solar Panel Sizes & Dimensions UK \(2024\)](#)

An average solar panel system requires between 15 to 19 solar panels and takes up 260 to 340 square feet of space. Solar panel efficiency, output, a good warranty, and a trusted brand are more important than focusing on solar panel ...



How to Wire a 12 Volt Solar System: Step-by-Step Guide with Diagram

One key component in a 12 volt solar system is the solar panel. These panels are responsible for converting sunlight into electricity through the photovoltaic effect. The wiring diagram will show ...



Solar Panel Sizes & Dimensions (UK): Simply Explained

Standard solar panel sizes & dimensions for residential and commercial panels in the UK. Expert tips on selecting the best solar panel size based on your energy needs and roof. ...and much ...



Deye Official Store

10 years warranty



Architectural Drawings for Solar Photovoltaic Systems

To meet the requirements of the DOE Zero Energy Ready Home program, provide an architectural drawing and riser diagram of RERH solar PV system components and solar hot water. Develop architectural drawings and ...



50KW modular power converter



Solar panel wiring basics: How to wire solar panels

However, as a solar professional, it's still important to have an understanding of the rules that guide string sizing. Solar panel wiring is a complicated topic and we won't delve into all of the ...

Solar Panel Wiring Diagram for All Setups [+ PDFs] - Solartap

What Is a Solar Panel Wiring Diagram? A solar panel wiring diagram (also known as a solar panel schematic) is a technical sketch detailing what equipment you need for a solar ...



The Complete Beginners Guide to RV Solar (Sizing, Design & Installation)

The diagram above shows 4 groups of solar panels (one per row). Jaboni 300W Solar Panel Specifications. We can start with the wire size from the panels to the charge controller. I will ...



12V Solar Panel Wiring Diagram: Step-by-Step Installation Guide

Learn how to wire a 12V solar panel system with this straightforward wiring diagram and step-by-step guide. Wiring a 12V solar panel typically involves connecting the positive and negative ...



The Ultimate Guide to Transformer for Solar Power Plant

Grid-connected photovoltaic power generation may be separated into centralized power generation using photovoltaics and dispersed photovoltaic energy generation; according to ...

Architectural Drawings for Solar Photovoltaic Systems

The drawings should also contain information about the PV array mounting system and identify the specifications for the major equipment including manufacturer, model and installation ...



How To Fuse a Solar Panel Array (With Diagrams)

How To Fuse a Solar Panel Array (With Diagrams) Eric Yu February 16, 2024. Fusing a solar panel system is arguably the LEAST interesting part of the solar installation process. It's tedious, involves numbers, ...



[Complete guide to solar panel size](#)

Half-cut solar cells. You may see some solar panels that have 120 cells or 144 cells. These are made using half-cut solar cells, which maximize how much of the panels' surface can turn ...



[Beginners Guide to 12 Volt Solar Panels](#)

The solar panel calculator will then be able to tell you the minimum and recommended system size, as well as the recommended battery output. How many panels would I need to charge a ...

Solar panel sizes and dimensions explained , FMB

Our guide walks you through what solar panel size means when it comes to output, the average dimensions of solar panels, and the size of the solar panel system needed ...



Series, Parallel & Series-Parallel Connection of PV Panels

Solar Module Cell: The solar cell is a two-terminal device. One is positive (anode) and the other is negative (cathode). A solar cell arrangement is known as solar module or solar panel where ...



Solar Panel Sizes & Dimensions in the UK (2024) , Glow Green

Typical residential solar panels in the UK range from 250W to 450W, with dimensions of approximately 189cm x 100cm x 3.99cm. The size and number of panels you'll ...



[Polycrystalline Solar Panel Specifications](#)

Even after 25 years of operation, PV panels still have an efficiency of over 80%. 5. Range of Power Output: 315 to 335 Watts-Peak. 6. Tolerance for Power: 0 to +5 Watts-Peak. Also Read: Monocrystalline Solar ...

Step-by-Step Guide to Understanding Solar Panel ...

It ensures that any excess current is redirected safely to the ground. When wiring your solar panel system, make sure to follow the National Electrical Code (NEC) regulations and consult a qualified electrician to ensure proper grounding.

...



4kW solar panel systems , Costs & output [UK, 2024]

A 4kW solar panel system costs around £9,500 to buy and install. If you want to include a battery in the installation, this will add around £2,000 to the price, for an overall ...



A Guide to Large Photovoltaic Powerplant Design

At a minimum, design documentation for a large-scale PV power plant should include the datasheets of all system components, comprehensive wiring diagrams, layout ...

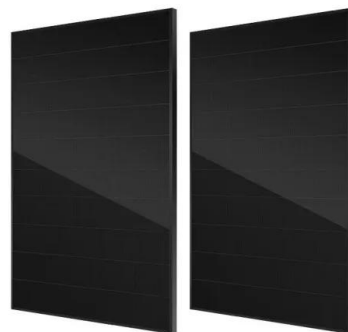


[BlueSolar Monocrystalline Panels](#)

BlueSolar Monocrystalline Panels BlueSolar Monocrystalline 305W Article Number Description Net Weight Electrical data under STC (1) Nominal Power Max-Power Voltage Max-Power ...

How to Design a Solar Pump System: A Step-by-Step ...

Size and Specifications: The inverter should match the pump's power requirements and solar panel output. Based on the known specifications of the pump (2.2 kW, 220V, 1 phase), the recommend inverter model is ...



PWM Solar Charge Controller - Working, Sizing and Selection

The best match for a PWM controller: The best matching panel for a PWM controller is a panel with a voltage just above provided for charging the battery and taking into account the ...



Solar Panel Installation Guide - Step by Step Process

Solar Panels perform at optimum capacity when placed in direct sunlight. When you install your Solar Power system, try to position your photovoltaic panels directly under the ...



[JA SOLAR PV MODULES INSTALLATION MANUAL](#)

JA Solar reserves the right to make changes to the product, specifications or installation manual without prior notice. Failure to comply with the requirements listed in this manual will invalidate ...

Contact Us

For catalog requests, pricing, or partnerships, please visit:
<https://vdbconstruction.co.za>