

# Photovoltaic panel supporting roof installation





## Overview

---

Can solar panels be installed on a tiled roof?

Installing solar panels on roofs is a popular choice for several reasons: low chances of shade from nearby objects, ample space that serves no other purpose, and closeness to your home. How are solar panels fixed to a tiled roof?

Solar panels are mounted on a system of rails and roof hooks. The rails float above the roof tiles.

Can you make a whole roof out of solar panels?

It is possible to create a whole roof out of solar panels using an in-roof system. Making the whole roof out of solar panels can be a fantastic option as installing solar panels is an asset to the home because of the savings in electricity and feed-in tariff payments. Why not consider making it your total roof covering?

.

What is a Solar Roof mounting system?

Solar roof mounting systems are the backbone of rooftop solar installations. They are the critical components that secure solar panels to roofs, ensuring stability and performance while withstanding environmental stressors. The design and construction of these systems are paramount to the overall success of solar energy generation.

How do you mount solar panels on a roof?

The mounting system will vary depending on the type of roof, such as flat, pitched, or shingle roofs. Common mounting methods include roof attachments, roof hooks, or solar panel racking systems. The mounting system should be securely fastened to the roof structure to ensure the stability and longevity of the solar panel installation.



What is an in-roof solar panel system?

An in-roof solar panel system sits on top of the roofs battens and is then tiled or slated around. It is possible to create a whole roof out of solar panels using an in-roof system.

How do I install roof-integrated solar panel roof tiles?

Roof-integrated solar panel installation is a simple process with Marley SolarTile® - just secure the fixings, place the first tile, push-fit additional tiles and then attach final fixings and flashings.



## Photovoltaic panel supporting roof installation

---



### [The Australian Solar Mounting Systems Guide](#)

All solar panel mounting systems will have a limit of building height - typically 10 m, but sometimes 20 m. For example, Australian company SunLock supplies a 'one size fits most' set ...

### **Bauder Solar: Flat Roof Solar Panel Installation**

The flat roof photovoltaic mounting system is attached to the roof without penetration of the waterproofing system or roof deck. The systems are designed to be used in conjunction with our Single Ply or Reinforced Bitumen ...



### **Solar panel installation: a guide for installers**

Solar panel installation is the most visible and time-consuming part of a solar system, but there's more to the project than putting panels on the roof - there's also wiring and ...

### **Solar 101: Attaching your solar system to your roof**

Bigger chunks of roof are easier, and cheaper, to install solar panels. Keep in mind that a standard residential solar panel is roughly five and a half feet tall by three feet ...

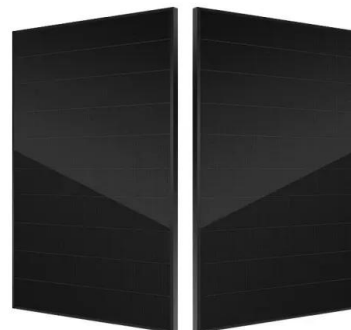


### GSE IN-ROOF SYSTEM

(Roof deck) Lathing (GSE panel support) Roof underlay Top of the PV field Bottom of the PV field Overall presentation of the installation of the kit: Positioning of the support battens GSE ...

### Rufy Roof Engineering - Solar Photovoltaic structures support ...

K2 Systems clips allow for expansion and shrinkage of photovoltaic panels that in 95% proportion have aluminum frames that expands to heat 1 mm / meter. If the panels are fixed by other ...



### [Our guide to installing solar panels](#)

Step by step solar panel installation. We have broken down the installation process of your solar panel into eight key steps. Before any installation takes place, the structural integrity of your ...



## Guide to installation of renewable energy systems on roofs of

2 General good practice during installation 3 3  
Photovoltaic systems 7 3.1 Overview of PV in the  
UK 7 3.2 Installation 7 4 Solar thermal systems  
17 4.1 Overview of solar thermal systems in ...



### [How to Install Solar Panels on a Shed](#)

Mount the fuse box and charge controller on the support wall, then connect them. Install the inverter on the support wall. Connect it to the fuse box and charge the controller to complete ...



## How are solar panels installed? , 11 steps explained

Here's how a solar panel installation works from start to finish, and what you should do before and after the installation. which the average roof can easily support - but ...



### [The Ultimate Guide To Flat Roof Solar Panels](#)

Fixing the panels to the structure, involves securing a support structure and bracket to the roof itself. Although more intrusive, this method often provides more peace of mind. On the other hand, weighing down the system ...





## Installation Guide: How are Solar Panels Secured to ...

Stay tuned as we continue to explore more aspects of solar panel installation in the upcoming sections of this guide. Step-by-Step Installation Process. Embarking on a Solar Panel Installation project, whether it's a DIY ...



### [DIY Solar Panel Installation Guide](#)

Most DIY home solar panel installations in the UK are roof mounted. As long as you're happy up a ladder, the process isn't as difficult as you might imagine. Contact Sunstore Solar today for ...

### [PV SYSTEMS - PHOTOVOLTAIC SOLAR SUPPORTS](#)

PV SYSTEMS - PHOTOVOLTAIC SOLAR SUPPORTS - Due to the location, the field configuration, necessary resistance to snow and wind, the geotechnical study, the model, ...



### [Fixing solar panels to membrane roofs](#)

Solar panels are predominately mounted on a supporting framework. The interface between the support framework and the roof covering is critical and if not taken care of correctly can cause ...



### [Solar Panel Costs UK \(Updated: November 2024\)](#)

A typical 4kW solar panel system for 2-3 bedroom houses costs £5,000 - £6,000 with installation. Added together, the total cost of solar panels and a battery in the UK ...



### **Is Your Roof Strong Enough for Solar Panels? , Paradise Energy**

Learn about the weight of solar panels, roof support, impact of snow, and panel installation. Skip to content. 877-851-9269. Contact; Solutions for: Business; Farms; Homes; Search. When it ...

### [Photovoltaics: Solar PV Roof Panel Systems](#)

A flat roof is the ideal place for a solar photovoltaic installation to generate site-sourced electricity. Renewable energy generation has a big role to play in the delivery of a net zero carbon building and integrating renewables allows it to ...



### **How to fit solar panels to A tiled Roof UK , DANLEC**

Well, they offer a sturdy foundation that can efficiently support solar panels. Moreover, fitting solar panels on weatherproof slates allows homeowners to maximise their energy savings while ...



### Roof-Mounted Solar PV Panels - Part 1: Structural Code

"R324.4.1 Roof live load. Roof structures that provide support for photovoltaic panel systems shall be designed for applicable roof live load..."  
"R907.2 Wind Resistance. Rooftop-mounted ..."



### Rooftop Solar Panels Install Guide: Equipment, Tools

Solar Panel Installation on Tiled Roofs: Best Practices for Mounting Roof Rails, Hooks, Connecting Panels To Rails and Safety. Installing solar panels on roofs is a popular choice for several reasons: low chances of ...

### The Different Types of Solar Panel Mounting Systems

In roof solar, or integrated solar panels are the ideal solution for new builds or anyone looking to re-roof there home. Many customers opt for an in-roof system because of ...



### Solar Technical Drawings

Clearline Fusion - PV16 - Solar PV Panels -Portrait - Integrated Pitched Roof: 000: 31.10.15: 10.011.c: Clearline Fusion - PV16 - Portrait - Integrated Pitched Roof - Array Dimensions: 000: 07.09.15: 10.001.4: Clearline Fusion - PV16 - ...



## Solar PV for Flat Roofs Design Considerations

In the UK, solar photovoltaic (PV) is a popular renewable energy and its deployment is rising rapidly across the globe. With recent fluctuations in energy markets and carbon reductions ...

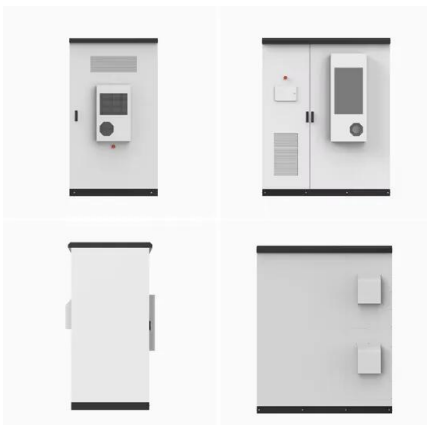


## [Solar Panel Mounting Structures](#)

Deciding to install a solar system is only the first step. Solar panel installation constitutes a substantial project with significant financial implications, entailing numerous ...

## Mounting Solar Panels: A Complete Beginner's Guide ...

See also: Solar panel mounting Roof + Ground (RV - Houses - Boats) Step 2: Install Roof Attachments. This step is where things start looking up (literally). Keep in mind the considerations for attachment types, depending on ...



## [Photovoltaic Panel Support Anchor](#)

Roofing Sarnafil® Solar Panel Support Anchor Photovoltaic Panel Support Anchor Product Description The Sarnafil® Solar Panel Support Anchor is a proprietary attachment product for ...



## GSE IN-ROOF SYSTEM

Easy to install 10 to 16 panels can be installed in around 6 hours. The GSE IN-ROOF SYSTEM is lightweight and takes up very little space: 116 half-frame per pallet. Two half-frames and ...



 Extreme Light Weight

 X3 Extended Cycle life

 Low Self Discharge

 Superior Cranking Power

 Completely Sealed

 Environmental



### [Fixing solar panels to membrane roofs](#)

Ways to fix Solar PV to the roof structure. So now we have looked at the roof structure and the roof coverings we can look at the different ways of mounting solar on the roof. Obviously, ...

### **Horizontal Vs Vertical Solar Panel Installation: Which Is Better?**

If you want to install solar panels on your rooftop, check if your roof is suitable for solar panels: The roof must be in good condition and built in the last 20 years for both ...



## Contact Us

---

For catalog requests, pricing, or partnerships, please visit:  
<https://vdbconstruction.co.za>