

Photovoltaic panel tile fixing bracket installation





Overview

Do you offer a plain tile solar panel fixing kit?

We offer plain tile solar panel fixing kits based upon 450mm rafter spacing and tile sizes. If your roof is different, then please advise. As the amount of brackets could alter depending on the spacing. Plain tile fixing kits for slate on roof solar panel sizes 2 to 16 panels can be used with all sized pv modules.

What is a solar plain tile fixing bracket?

Solar plain tile fixing brackets connect rails to stainless steel K2 dog leg support system part number P1000214 designed tiled roofs.

How do I install roof-integrated solar panel roof tiles?

Roof-integrated solar panel installation is a simple process with Marley SolarTile® - just secure the fixings, place the first tile, push-fit additional tiles and then attach final fixings and flashings.

How do I assemble the fixing rails for a permanent solar panel?

To assemble the fixing rails for a permanent solar panel structure it would be essential to use these parts. Once the tiles have been removed to expose the timber framework of the roof under, these brackets are screwed into place using stainless steel fasteners. Ideally then you can use our flashing kit to stop the ingress of water.

How many plain tile stainless steel brackets are available?

The Plain tile stainless steel brackets are available individually or in trade sale box quantities of 25 brackets. These are available with or without stainless steel fixing screws and flashing kits to water tight seal any on roof installation. Solar panel plain tile fixing brackets for tiled roofs.

Can a plain tile solar kit be used on a slate roof?



Plain tile solar kit to match many roof covering types, they can be used on man made or natural slate roofs. These dog leg brackets are easily held in place using 2 x stainless steel screws. Kit can be used with our flashing kits to weather proof the installation. Parts included in this kit are as follows:



Photovoltaic panel tile fixing bracket installation



Roof Mounting Brackets for Solar Panels , All Roof Types

Roof Mounting Solutions Valsa's Roof mounting brackets and structures provide a solution for the installation of solar panels onto all types of roofs i.e. c. Discover the best roof mounting ...

Sloped Roof Solar Mounting Kits , solar panel roof

Our rooftop solar panel kits are complete with all material parts to suit any pitched-roof and covering including slate, pan, plain tile, Marley, trapezoidal, clay, or any version of raft mounting structure, thus enabling the homeowner to ...

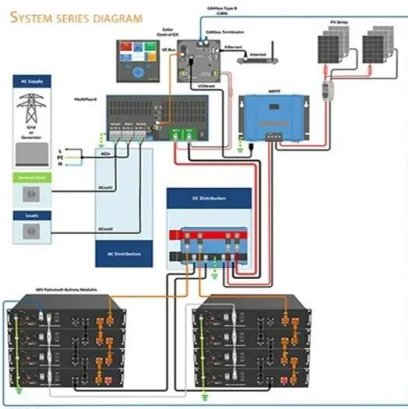


Fitting solar panel brackets to a concrete tile roof

I installed a set of used Solar panels on a concrete tile roof in the North of England. There are lots of rules and regulations when dealing with solar, you

Photovoltaic ground bracket installation options

The installation selection of photovoltaic ground brackets is mainly based on factors such as the fixing method of the bracket, terrain requirements, material selection, and the weather ...

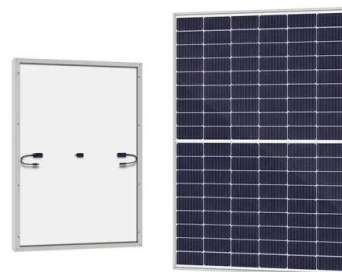


Brackets for Fixing Photovoltaic and Solar Panels on ...

Our photovoltaic panel fastening kits for tiles come with all necessary components for installation: steel or aluminum brackets, stainless steel bolts, various hardware, etc. These brackets are designed to adapt to most tile types and ...

Rooftop Solar Panels Install Guide: Equipment, Tools ...

Solar Panel Installation on Tiled Roofs: Best Practices for Mounting Roof Rails, Hooks, Connecting Panels To Rails and Safety They are sturdy metal brackets screwed into the joists underneath the tiles and sit ...



Slate solar fixing kits , slate roof PV panel installation

o We offer as standard 2 panel kits through to 16 panel solar fixings o These are complete solar panels slate solar fixing kits that contain our standard aluminium rails with joiners as required. ...



Marley tile solar kit with fixing brackets + rails to match

We offer Marley modern tile solar panel fixing kits based upon 400-450mm rafter spacings. If your roof is different, then please advise. As the amount of brackets could alter depending on the ...



Slate Solar Fixing Kits , on roof PV system for all panels

Slate tile solar panel fixing kits portrait Stock these can be used with lead soaker to weatherproof the installation. FIXING CLAMPS ARE AVAILABLE IN BLACK OR 10 panel x ...

Fixing solar panels, structures and photovoltaic power plant ...

Fastening photovoltaic panels, structures, and supports for the installation of solar systems: our solutions. Sun-Age has been by your side since 2008 for fixing photovoltaic systems and solar ...



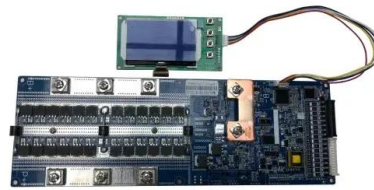
How to fit solar panels to A tiled Roof UK , DANLEC

When reinstalling the tiles after solar panel installation, ensure they are securely placed back into their original positions. Securing Mounting Brackets. The first step in fitting solar PV panels on a tiled roof is securing the mounting brackets. ...



Solar PV fixings and wind loading

panels are installed. More details about insuring solar panels. Roof-integrated panels, tiles and slates On new buildings or when a house is being re-roofed, you may prefer a roof-integrated ...



Solar PV fixings and wind loading

o roof integrated - used instead of tiles or other roofing materials o installed on a flat roof o ground mounted. Retrofitted roof panels Solar PV panels can be retrofitted onto an existing roof, on ...

Solar Panel Install

Elevation - the optimal elevation for a photovoltaic installation is 40° from horizontal. This has been calculated to give you the maximum exposure during all seasons i.e. the low sun in ...



LFP 12V 100Ah

Solar Panel Fixing Options

Here is a piece on Solar Panel Fixing Options built to help Developers, Contractors, Architects, and Homeowners grasp what's on offer for fixing PV panels. is when solar panels are fixed ...



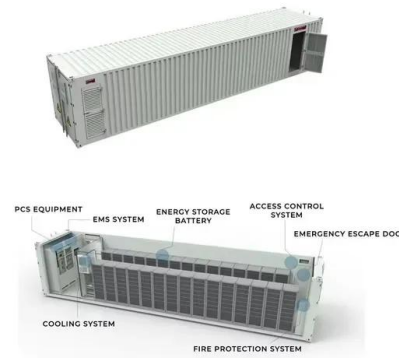
European Warehouse
 
 7-15 days
 ONE-STOP SOLUTION

65kWh	30kW
130kWh	30kW
130kWh	60kW



Solar PV slate mounting brackets , P1000373 , K2 type

Links to associated roof tile solar bracket fixing products: Plain tile solar rail fixing brackets: Slate solar rail fixing brackets: Slate and plain tile bracket flashing kit: Stainless steel T bolt and serrated nut set: Stainless steel bracket fixing ...



Solar Panel rails PV module mounting , roof fixing

K2 solar panel rails 3.65m Lengths. New ultra light solar panel roof rails enable less-waste reducing cutting time. These ideal solar panel rail lengths will hold up to 3 full size landscape oriented solar panels sided by side. If a larger span is ...

PV Bracket

A durable, 2mm thick stainless steel bracket enable secure and easy installation of photovoltaic panels on a Metrotile roof system. The brackets have been specially designed to be screwed into the rafter centres and sit between the ...



Solar fixing flashing slate and man made roof coverings

We offer a solar bracket fixing kit to protect roof from water ingress. Fix once and forget about leaking issues. 1 x solar plain tile bracket flashing; 2 x shims; 1 x foam insert . Finished ...



Concrete Tile solar fixing Kit on roof , 2-24 PV panel system

Pantile/concrete tile solar panel fixing kit. FIXING CLAMPS ARE AVAILABLE IN BLACK OR SILVER ANODISED FINNISH (PLEASE ADVISE). Via drop-down menu below select kit ...



Brackets for solar panels: supports for fixing the solar panel ...

This is a specific stainless steel solar panel bracket for bent tiled roofs, 5mm thick with an adjustment from 6 to 9.5 cm. This adjustable high bracket is suitable for all roofs with pitched ...



How to Mount Solar Panels on Tile Roof: Easy Guide

Apply a waterproof underlayment beneath the solar panel installation area to prevent water infiltration. Proper sealing and waterproofing are essential to protect your roof and interior. ...



How do I install roof integrated solar panels? , Marley

Roof-integrated solar panel installation is a simple process with Marley SolarTile® - just secure the fixings, place the first tile, push-fit additional tiles and then attach final fixings and flashings. ...



Roof Integrated SolarTile® , Marley , Solar Roof Tiles

NEW! 410Wp Solar Panel. Larger than Marley's 335Wp panel, the new 410 Solar Photovoltaic Panel delivers a peak power of 410Wp to increase total power from a roof area, whilst allowing for the installation of fewer solar panels to achieve ...



51.2V 300AH



Concrete tile solar fixing Kits , Solar pan tile roof kit

Concrete tile bracket. Solar panel installations can be matched or suited to similar style concrete roof coverings, these can provide security for PV panels by fixing on to tile panel kits. By using ...

The Different Types of Solar Panel Mounting Systems

In roof solar, or integrated solar panels are the ideal solution for new builds or anyone looking to re-roof there home. Many customers opt for an in-roof system because of ...



Plain Tile Fixing Kits , solar panel roof coverings

Plain tile fixing kits for slate on roof solar panel sizes 2 to 16 panels can be used with all sized pv modules. 10 panel x 2 rows PLAIN-TILE PORTRAIT roof fixing kit: = 32 brackets + 64 wood screws + flashing kits + 32 T bolts + 32 nuts + 4 ...



Solar Roof fixings

Equipment included within range, solar photovoltaic slate brackets in stainless steel. Pan tile, plain tile, concrete tile, Marley, slates and rafter sets with rails to match any solar PV panel roof ...



PV-ezRack SolarRoof Tile Roof Solar Mounting System

With a full range of roof hooks and brackets, PV-ezRack SolarRoof(TM) is suitable for most roofing types, including pitched tile roofs, metal roofs, concrete roofs and even slate roofs. High ...

ERIC-TILE

ERIC-TILE. ERIC-TILE plain tile roof hook allows for simple solar panel installations on plain/rosemary tiled roofs. No cutting, no sealants and no leaks. Helps prevent tile breakages whilst allowing installer's to stand on ...



Contact Us

For catalog requests, pricing, or partnerships, please visit:
<https://vdbconstruction.co.za>