

Photovoltaic panels are installed in a directional manner





Overview

To take maximum advantage of solar radiation, it is advisable to orient the solar panels towards the south if we are in the northern hemisphere and the north if we are in the southern hemisphere. Why does solar panel orientation and angle matter in a solar power system?

Prior to understanding why solar panel orientation and angle matter in a solar power system, we need to know how a solar panel collects energy from the sun. Solar panel cells only collect a specific wavelength during absorbing radiant energy from the sun.

How to calculate solar panel orientation?

The orientation is composed of two parameters: direction and tilt angle. Select your timezone and enter your coordinates (latitude and longitude) to calculate the optimal orientation for fixed solar panels, twice adjusted solar panels, quarterly (seasonally) adjusted solar panels, and monthly adjusted solar panels.

Which direction should solar panels be oriented?

To take maximum advantage of solar radiation, it is advisable to orient the solar panels towards the south if we are in the northern hemisphere and the north if we are in the southern hemisphere.

Should solar panels be installed in landscape orientation?

Installing solar panels in landscape orientation is often the default choice for solar designers. The simplicity of design and installation, coupled with the widespread use of landscape-mounted panels in commercial installations, makes it a go-to solution for many solar projects. However, simplicity does not always equate to optimal performance.

Why is solar panel orientation important?

Your solar panel orientation is an important part of the sizing of photovoltaic



and solar thermal systems. Since solar power produced is directly proportional to the orientation of solar panels, the right orientation can not only maximize solar power but also decreases the cost of the project.

Which direction should solar panels face in the UK?

In the UK, solar panels should ideally face south in order to capture the most daylight throughout the day. It's best to avoid installing solar panels that face north, since there's never much daylight from that direction in the northern hemisphere. Panels can still perform well facing east or west.



Photovoltaic panels are installed in a directional manner

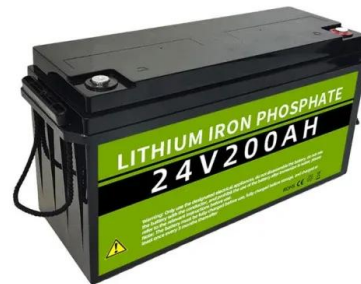
FAQs on Solar PV Systems

1. Is there a limit as to how much solar electricity a DEWA customer can produce? As per Shams Dubai Connection Conditions (Publications & Resources), the capacity installed should not exceed the applicable share of ...



A Review of Time-Based Solar Photovoltaic Tracking Systems

Solar energy is the cleanest and most abundant form of energy that can be obtained from the Sun. Solar panels convert this energy to generate solar power, which can be ...



What is the Best Angle for Solar Panels? Maximizing the Efficiency

Using Renogy's adjustable solar panel tilt mount brackets allows you to properly orient the panels at the perfect pitch for your site's solar access and roof, ensuring maximum ...

Solar Tracking System: Working, Types, Pros, and Cons

Parameters: Type 1: Type 2: Working: Passive tracking devices use natural heat from the sun to move panels.: Active tracking devices adjust solar panels by evaluating ...



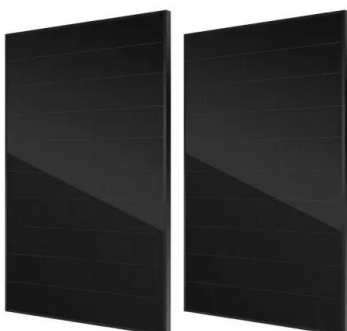
Is A Solar Tracking System Worth It? , EnergySage

There are many unique ways to design and install a solar energy system for your property to power your home with solar power. If you're considering a ground-mounted ...



How to Find the Best Orientation and Angle of Solar ...

Putting solar panels at the optimal angle and to the best orientation is essential to obtain the maximum energy in a solar power system. To maximize the energy conversion efficiency, use proper mount brackets, and ...



Solar Panel Orientation: Landscape vs Portrait , Fenice ...

Landscape orientation, where solar panels are installed with their long side parallel to the ground, is a conventional and widely adopted approach. This configuration is favored for its ease of installation and ...



Which Is More Important: Solar Panel Orientation or Angle?

The majority of solar panel systems are installed at the angle that maximizes sunlight exposure for that location. For most homeowners, the ideal solar panel installation ...



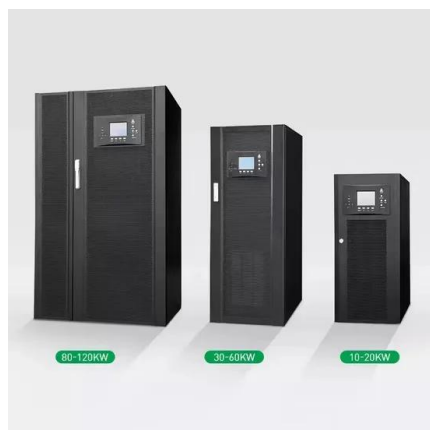
What Direction Should Solar Panels Face?

This incline is perfect for all the seasons throughout the year. Tilt is a very important factor when it comes to generating thermal energy through solar panels. 2. Photovoltaic Panels. Photovoltaic panels are where the electricity is ...



Improved Orientation Strategy for Energy-Efficiency in Photovoltaic Panels

PV panel's orientation has been investigated for achieving maximum incident radiation collected by PV panels at summer session, when large water quantity is demanded ...



Solar PV Panels: Complete Guide to Home Solar Electricity

Solar PV panels have long been a popular renewable technology among self-builders and renovators. Thanks to a mixture of government incentives and falling technology ...



Which Direction Should Your Solar Panels Face?

Solar Panel Tilt. The other type of solar panel direction you need to consider is the tilt angle. Tilt angle refers to the angle from the ground at which the solar panels are tilted, where 0° is lying ...



Automatic Orientation of Solar Photovoltaic Panels

orientation system for the photovoltaic solar panels in the middle East region which is considered very rich in solar energy. This orientation system is expected to save more than 40% of the ...

Net Metering: Residential Solar & Grid Interaction

This system enables homeowners to interact with the grid in a two-way manner, allowing them to both consume electricity from the grid and send surplus solar energy back to it. (PV) solar systems convert sunlight ...



The Different Types of Solar Panel Mounting Systems

In roof solar, or integrated solar panels are the ideal solution for new builds or anyone looking to re-roof there home. Many customers opt for an in-roof system because of the sleeker aesthetics. As the solar panel sit snugs ...



FAQs on Solar PV Systems

1. Is there a limit as to how much solar electricity a DEWA customer can produce? As per Shams Dubai Connection Conditions (Publications & Resources), the capacity installed should not ...



Do I Need To Change My Meter For Solar Panels?

Solar panels have become an increasingly popular choice for homeowners seeking to harness clean and renewable energy while reducing their electricity bills. As you ...

Part 1: Guide to Understanding Your Solar System Components

When you install a solar energy system, you gain a few additional components on the side of your home or business. The Inverter, the AC Disconnect, the Production Meter, ...



How do Solar Panels Work? - Working of Photovoltaic (PV) Systems

As we experience a sudden surge in solar panel installation, it is beneficial for people to get familiar with the working of the photovoltaic system. Solar panels are improving, ...



Impact of solar panels on global climate

The solar panel installed area in the SPDLess experiment is only about 10% of that in the SPDU experiment (Supplementary Fig. 1). The energy production is about 59 ± 1 ...



Photovoltaic systems

Given its rapid uptake and installation of solar energy, Australia could potentially have one of the largest PV waste streams in the coming years - with possibly at least 100,000 tonnes of PV panels entering the waste stream by 2035 (refer to ...)

In Which Direction Should Solar Panels Be Installed?

Before delving into specific recommendations, it's imperative to grasp the dynamics of solar panel orientation. The correct direction a solar panel faces and its tilt or inclination angle play a pivotal role in the amount of ...



The best angle and direction for solar panels in the UK

6 ???· The impact of direction on solar panel output. Your solar panel system's direction is one of the biggest factors in determining its output. This chart below uses an average of 26 ...



The best angle and direction for solar panels in the UK

Solar panels should ideally face south in the UK, though arrays that face east or west can also be extremely productive. North-facing solar panels aren't usually worth installing. On the other hand, panels that point towards the ...



[Ground Mounted Solar Panel Systems UK](#)

While the rooftop solar panels are the most common choice for homeowners, there are actually quite a few reasons you should take the time to consider a ground-mounted solar panel system instead. Typically speaking, ...

Solar Panel Installers , Solar Panels Network USA

Expert Solar Panels Installers. Save on Electricity Bills, Reduce Your Carbon Footprint, and Enjoy a Brighter, Sustainable Future. Call Us Today at 855-427-0058.



Optimizing Solar Panel Angles for Maximum Energy Efficiency

Understanding Solar Panel Tilt. The vertical tilt of your solar panels, known as the solar panel angle, can greatly affect their efficiency in capturing sunlight. For instance, ...



Solar Glossary: Key Solar Terms Defined

The term solar panel is often used interchangeably with solar panel. To accomplish desired current and voltage, solar panels are wired together to form an array . The average household ...



What is the best direction for solar panels to face?

South-facing solar panels will perform the best for a vast majority of homeowners. If you do not have a south-facing roof - don't worry! Your solar panels will still be able to produce energy, ...

Best Angle & Direction for Solar Panels UK: November ...

The best angle for solar panels in the UK is between 30° and 40°. To ensure that your solar panels can produce energy optimally, they should be installed on a south-facing part of your roof. Solar panel angle and ...



A guide for where to place your solar panels , Geo Green Power

Monocrystalline solar panels are made from a single silicon crystal and tend to be more expensive but convert 15-24% of sunlight. Panel efficiency can impact the number of ...



Solar panel inclination angle, location and orientation

Select your timezone and enter your coordinates (latitude and longitude) to calculate the optimal orientation for fixed solar panels, twice adjusted solar panels, quarterly (seasonally) adjusted solar panels, and monthly ...



Contact Us

For catalog requests, pricing, or partnerships, please visit:
<https://vdbconstruction.co.za>