

# **Power system engineering madison wi**





## Overview

---

What is the Power Systems Engineering Research Center?

The Power Systems Engineering Research Center (PSERC) was created in 1996 as a National Science Foundation Industry-University Cooperative Research Center to address key challenges in creating a modern electric energy infrastructure. Under the banner of PSERC, 39 industries and 13 U.S. universities are working collaboratively to support:

What is Power System Engineering?

Power System Engineering (PSE) is a full-service engineering and consulting firm based in Madison, WI. We have a team of experienced and professional engineers, economists, and financial analysts with a focus on the electric power and industrial sectors. Power System Engineering began in 1974.

Who is PSE?

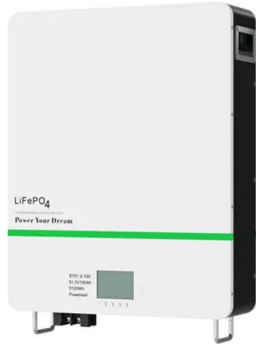
PSE is an electrical energy expert and since 1974, has provided relationship-driven engineering and consulting services for forward-thinking partners who pursue long-term energy solutions. HOT TOPIC: Broadband or Not to Broadband?

“PSE has been leading the industry for decades.



## Power system engineering madison wi

---



### Graduate programs - WISPO - Wisconsin Power Systems - UW-Madison

There are several degree options available to students wishing to pursue a Master of Science in Electrical and Computer Engineering (ECE) at UW-Madison. The three degree options relevant to power systems are: Research--traditional two-year master's program culminating in a thesis or research project. Professional--accelerated, course-based master's program with the ...

### Power System Engineering, Inc. Company Profile , Madison, WI

Find company research, competitor information, contact details & financial data for Power System Engineering, Inc. of Madison, WI. Get the latest business insights from Dun & Bradstreet. Dynamic search and list-building capabilities Real-time trigger alerts



### Electrical Engineer Jobs in Madison, WI (Hiring Now!)

135 Electrical Engineer Jobs in Madison, WI hiring now with salary from \$59,000 to \$109,000 hiring now. Apply for An Electrical Engineer jobs that are part time, remote, internships, junior and senior level. Our client is a manufacturer of industrial and commercial

### Power System Engineering, Inc. , Madison, WI , Procore

Wisconsin Madison Power System Engineering, Inc. Power System Engineering, Inc. Claimed Business 2424 Rimrock Rd, Madison, WI



+16082683558 4 Trades and Services Power System Engineering, Inc. is a Consultant, Engineer that serves the Madison



### Power System Engineering

View Power System Engineering () location in Wisconsin, United States, revenue, industry and description. 1532 W Broadway Ste 103, Madison, Wisconsin, 53 Phone Number (608) 222-8400 Website Revenue



### [TESS : Thermal Energy System Specialists](#)

MADISON, WI 53703 PHONE: 608.274.2577 INFO@TESS-INC Welcome to TESS As an engineering consulting company specializing in the modeling and analysis of innovative energy systems and buildings, we have worked hard to achieve a reputation A



### Power System Engineering

Madison, WI 53704 Development Quality Design & Construction Portfolio About Our Listings Contact Main Menu Office Power System Engineering Madison, WI March, 2022 Cameca Instruments Fitchburg, WI Galleon Run (Building 1) Madison, WI We handle





### About Us

Power System Engineering (PSE) began in Madison, WI in 1974. We are a full-service engineering and consulting firm consisting of a breadth of experienced and professional engineers, economists, and financial analysts with a focus on ...



### Power System Engineering, Inc. Careers and Employment

Power System Engineering (PSE) began in Madison, WI in 1974. We are a full-service engineering and consulting firm consisting of a breadth of experienced and professional engineers, economists, and financial analysts with a focus ...

### Power System Engineering, 2000 Engel St, Madison, WI 53713, ...

Get more information for Power System Engineering in Madison, WI. See reviews, map, get the address, and find directions. Bear Valley Engineering, Inc is a multi-discipline engineering consulting firm founded in the year 2000. We provide engineering design and



### Overview - Power Systems Engineering Research Center - UW-Madison

As a National Science Foundation Industry-University Cooperative Research Center, the Power Systems Engineering Research Center (PSERC) draws on university capabilities to creatively address the challenges facing the electric power industry. Its core purpose is to empower minds to engineer the future electric energy system. Under the banner of PSERC, multiple U.S. ...



## Power Systems Engineering Research Center - UW-Madison

IEEE PES Outstanding Young Engineer Award. Anamika Dubey, Associate Professor at Washington State University, is the recipient of the 2023 IEEE PES Outstanding Young ...



## Electrical & Computer Engineering: Power Engineering MS

The Master of Science in Electrical & Computer Engineering: Power Engineering program at UW-Madison helps you build the skills that power engineering employers demand. Access the newest technologies and techniques in electric machines, power electronics, sensors, motion control, and drive applications.

## Graduate programs - WISPO - Wisconsin Power Systems - ...

Master programs. There are several degree options available to students wishing to pursue a Master of Science in Electrical and Computer Engineering (ECE) at UW-Madison. The three ...



## Energy Systems

UW-Madison College of Engineering: Outstanding research, education and service to society. Electrical energy systems are a critical foundation for the modern human enterprise. With rising global concerns of climate change, our research promotes solutions that



## College of Engineering , University of Wisconsin-Madison

The College of Engineering at the University of Wisconsin-Madison is known for outstanding research, educators and service to society. Connect, compete, network, learn, lead, volunteer, grow and more. Joining student orgs (but maybe not all 50 of them) gives you



### People - WISPO - Wisconsin Power Systems - UW-Madison

The Wisconsin Power Systems (WISPO) research group is comprised of faculty, graduate researchers and undergraduate students doing research on electric power systems modeling, ...

### People - WISPO - Wisconsin Power Systems - UW-Madison

The Wisconsin Power Systems (WISPO) research group is comprised of faculty, graduate researchers and undergraduate students doing research on electric power systems modeling, optimization and control. We are housed in the Department of Electrical and Computer Engineering at the University of Wisconsin-Madison. Our team has landed in Madison from all ...



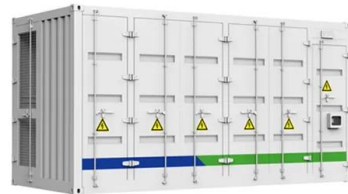
### [Power System Engineering \(PSE\)](#)

Power System Engineering, Inc. (PSE) is a full-service consulting firm. Our team has extensive experience in all facets of the utility industry including communications, IT, and smart grid



### Electrical and Computer Engineering: Power Engineering

THE UNIVERSITY OF WISCONSIN-MADISON (UW-Madison) is a public research university in Madison, Wisconsin. Founded in 1848, it is one of the 10 largest research institutions in the United States. Spanning the humanities to the hard sciences, our teaching, research and outreach missions reflect our commitment to the Wisconsin Idea.



### Power System Engineering (PSE) hiring Substation Engineer in Madison

Posted 1:38:55 PM. Substation Engineer - Madison WI & Marietta OH Excellence Through People! Take your career to the... See this and similar jobs on LinkedIn.

### Power Systems Engineering Research Center , Wisconsin ...

The Power Systems Engineering Research Center (PSERC) was created in 1996 as a National Science Foundation Industry-University Cooperative Research Center to address key ...





### Madison

Mrs. Andrew earned a BS degree in Electrical Engineering from the University of Wisconsin-Platteville. She has over 20 years of power utility experience, including tariff and legal agreement administration, NERC [...]

### Heather Andrew

Mrs. Andrew earned a BS degree in Electrical Engineering from the University of Wisconsin-Platteville. She has over 20 years of power utility experience, including tariff and legal agreement administration, NERC reliability standards compliance, generator interconnection, studies, retirement, and surplus processes, transmission and distribution planning studies. She has ...

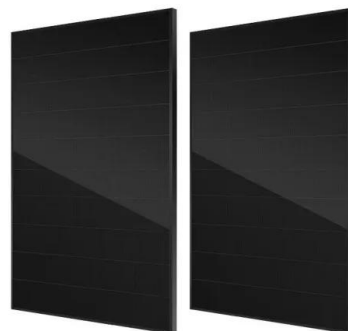


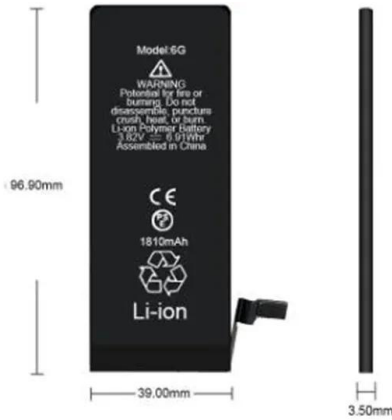
### Professional Development - Power Systems Engineering ...

University of Wisconsin-Madison: Interdisciplinary Professional Programs Site footer content Part of the Universities of Wisconsin Power Systems Engineering Research Center (PSERC) Website feedback, questions or accessibility issues: [pserc@asu](mailto:pserc@asu) .

### Energy Systems

UW-Madison College of Engineering: Outstanding research, education and service to society. Energy researchers apply mechanical engineering principles to systems that convert energy from one form to another. These systems include things like power production



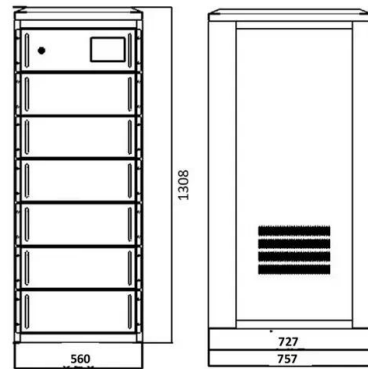


### Power System Analysis Skills for Engineers and Technicians

Learn the fundamentals and advanced concepts of power system analysis in this practical course, Apr. 15-17, 2025 - Madison, WI or Live Online (D427) - \$1,895.00 See more Site footer content Related Sites College of Engineering UW Professional Degrees

### [Working at Power System Engineering](#)

Power System Engineering (PSE) began in Madison, WI in 1974. We are a full-service engineering and consulting firm consisting of a breadth of experienced and professional engineers, economists, and financial analysts with a focus ...



### Power Engineer Jobs, Employment in Wisconsin , Indeed

337 Power Engineer jobs available in Wisconsin on Indeed . Apply to Electrical Engineer, Field Service Engineer, Industrial Engineer and more! Skip to main content Home Company reviews Find salaries

## Contact Us

For catalog requests, pricing, or partnerships, please visit:  
<https://vdbconstruction.co.za>