

# Pse utilities





## Overview

---

PSE's electric supplies include utility-owned resources as well as those under long-term contract, for a total capacity of 5,044 (MW). While PSE-owned generating capacity is at 3,597 MW. PSE owns coal, hydroelectric, natural gas and wind power-generating facilities, with more than 3,500 MW of capacity. In 2018, PSE's generation was 36% coal, 32% hydroelectric, 20% natura.

What does PSE stand for?

Puget Sound Energy, Inc. (PSE) is an energy utility company based in the U.S. state of Washington that provides electrical power and natural gas to the Puget Sound region.

Where does PSE buy natural gas?

For its natural gas service to customers, PSE purchases a portfolio of natural gas supplies originating in western Canada and the U.S. Rocky Mountain states. PSE was formed in 1997 when two of its largest ancestral companies – Puget Sound Power & Light Company and Washington Energy Company – merged.

What does PSE do?

PSE believes in partnering with our customers to create a better, cleaner energy future. Through our half-dozen industrial programs, including the Industrial System Optimization Program and Industrial Strategic Energy Management, we're helping industrial businesses reduce their energy usage while lowering their bills and earning incentives.

What is Puget Sound Energy?

Puget Sound Energy is the largest energy utility in the state, providing electric power to more than 1.2 million customers.

What type of energy does PSE own?

PSE owns coal, hydroelectric, natural gas and wind power-generating facilities, with more than 3,500 MW of capacity. In 2018, PSE's generation was 36%



coal, 32% hydroelectric, 20% natural gas, and 10% wind derived. Less than one percent originated from other energy efficiency programs.

What power plant does PSE own?

PSE's partial ownership of Eastern Montana's Colstrip Generating Station represents the single largest power-generating facility PSE owns, approximately 700 MW of generating capacity. In 2010, the Colstrip Generating station was the 8th largest greenhouse gas emitter among power plants in the United States.



## Pse utilities

---



### [PSE , Customer Help Center and FAQs](#)

Visit the Puget Sound Energy Help Center to get your PSE questions answers. We can help with billing, account questions, upgrades, meters and more. If you are looking to upgrade your PSE meter or find information about tree trimmings and power outages, PSE can help. Learn more about these topics.

### Home Page

PSE& G WorryFree offers Protection Plans for most major home appliances. We also provide timely, reliable appliance repair services, as well as, replacements for heating systems, cooling systems and water heaters.



**1075KWHH ESS**

### PSE , HELP

PSE's Home Energy Lifeline Program (HELP) provides assistance for residential customers to help pay electric or natural gas bills. If you qualify, we'll credit your account for up to \$1,000. To apply, begin your application below to receive the help you need.

### **Puget Sound Energy will ramp up collection efforts for thousands ...**

PSE officials chafed at the suggestion the utility was moving too aggressively. "It's unfortunate that key partners, including the community action agency partners who distribute PSE's assistance dollars, spend their time making



assumptions that ...

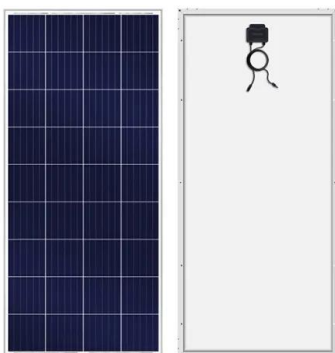


### Puget Sound Energy , Utilities

About Us We've been meeting the Puget Sound region's energy needs for more than 135 years. We proudly embrace our responsibility to provide you with safe, reliable, reasonably priced energy service. PSE employ

### PSE , Our Diversified Electricity Supply

Puget Sound Energy is the largest energy utility in the state, providing electric power to more than 1.2 million customers. As of December 31, 2022, our electric power resources (company-owned, controlled or under long-term contracts) ...



### **Home**

A full-service consulting firm for electric utilities, independent power producers, industrial facility owners, energy resource developers, and more. Committed to Uniting Proven Approaches with Innovative Solutions PSE is an electrical energy expert and since 1974



[PSE , Corporate Information and Facts](#)

During our more than 135-year history, one thing has remained constant: Puget Sound Energy's focus on safe, reliable, affordable energy service. And we're proud of our legacy at PSE: A commitment to great customer service always and helping to make our communities better places to live and work.



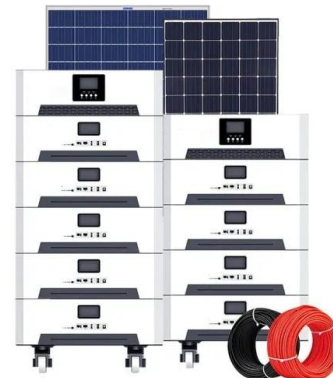
**PSE , Facts about HB 1589**

Facts about HB 1589 BELLEVUE, Wash. (3/29/2024) HB 1589, passed by the state legislature in March 2024, is a planning bill. It will help PSE, under the supervision of the Washington Utilities and Transportation Commission (UTC), thoughtfully



[PSE , Locations and Service Area](#)

PSE locations As Washington state's oldest local energy company, PSE serves approximately 1.1 million electric customers and over 900,000 natural gas customers in 10 counties across 6,000 square miles, primarily in the Puget Sound region of Western Washington.



[PSE , Current Projects Map](#)

Curious about a project in your area? View our map to learn more about it, see start and end dates, find project contact info and determine local impacts. To find PSE system improvement or maintenance projects near you, enter your address, city, or ZIP code.





## Puget Sound Energy

Puget Sound Energy. 53,964 likes · 287 talking about this. Washington state's largest energy utility. Aspiring to reach beyond net zero carbon emissions by 2045. Power out? Report & track at



### Home Energy Storage (Stackable system)



-   
High Efficiency
-   
Easy installation
-   
Safe and Reliable
-   
Perfect Compatibility

**Product Introduction**

-  Scalable from 10 kWh to 50 kWh
-  Self-Consumption Optimization
-  Integrated with inverter to avoid the compatibility problem
-  LFP battery, safest and long cycle life
-  Stackable design, effortless installation
-  Capable of High-Powered Emergency-Backup and Off-Grid Function

## Puget Sound Energy

PSE's electric supplies include utility-owned resources as well as those under long-term contract, for a total capacity of 5,044 megawatts (MW). While PSE-owned generating capacity is at 3,597 MW. PSE owns coal, hydroelectric, natural gas and wind power-generating facilities, with more than 3,500 MW of capacity. In 2018, PSE's generation was 36% coal, 32% hydroelectric, 20% natura...

### PSE , Pay my bill

Discover different payment options for your Puget Sound Energy bill. Pay your bill online, by the phone, through the mail or even in person at on of our PSE pay stations. PSE also offers a ...



### [PSE , Email, Call or Write Us](#)

Contact us! Use our contact form to reach out or find one of our Puget Sound Energy locations. Connect with PSE online through one of our social media accounts or use our 24-hour emergency and outage line to report a problem to PSE. You can ...



### **PSE , Time of Use**

To meet goals for providing clean, sustainable and affordable energy to all of our customers, PSE launched a Time-of-Use (TOU) pilot program this fall. Through the pilot, a limited number of residential electric customers were recruited to ...



### [PSE , Technical Resources for Construction](#)

Reference these guides for current standards and specifications on PSE and customer responsibilities for utility installation. Puget Sound Energy can offer video guides and other resources for those looking to install utilities on a commercial, industrial or residential property.



### [PSE , Puget Sound Energy Rates](#)

Puget Sound Energy's electric and natural gas rates reflect a combination of many items: delivering the energy you use, the price of the energy itself, and PSE's overall operating and capital costs -- including maintaining and upgrading our systems. Learn more



### **Puget Sound Energy , Utilities, Recycling, & Environment**

Puget Sound Energy is Washington's largest utility and a dual-fuel energy company. We aspire to lower our carbon emissions to net zero by 2045 and help others do the same.





### **Puget Sound Energy proposes hefty rate hikes to pay ...**

To meet that goal, PSE has said it will need to acquire 6,700 megawatts of renewable or non-emitting generating power by 2030, which is more than what the utility has acquired in its 150-year



### **Home**

PSE is adding two large clean energy projects in Washington state: utility scale solar and battery energy storage. Together, these two projects can generate up to 342 MW of energy, supporting our commitment to diversify our renewable ...

### **Puget Sound Energy proposes hefty rate hikes to pay for hydro ...**

The utility's last rate case in 2022 was contentious as the utility, environmental groups and the utilities commission discussed how to cut emissions equitably. PSE has said that it will have a



### [PSE . Create Your Online Account](#)

Setting up a PSE account is the easiest way to pay your bill, customize your account and get personalized energy-reduction tips for your home or business. Where is my account number? Your 12-digit account number can be found on your monthly Puget Sound



## Puget Sound Energy

Washington state's largest energy utility. Aspiring to reach beyond net zero carbon emissions Puget Sound Energy. 53,964 likes · 287 talking about this. Washington state's largest energy utility. Aspiring to reach beyond net zero ...



### [PSE , View Your Home Energy Usage and Bills](#)

See details about your energy usage, from how much you're using to what is using the most energy in your home. You can even compare bills to monitor usage over time. Find out how PSE can help you reduce your bills and save energy. Learn more ways to save

## PSE , Bill Discount Rate

Our Bill Discount Rate (BDR) program provides you with ongoing help on your monthly energy bill. Depending on your household income and household size, you can save 5% to 45% a month on your bill. There is one simple application to fill out. In most cases, no



### [PSE , Sign Into My Account](#)

Sign in to use your PSE account online. You can sign in to access your Puget Sound Energy account information and start, stop or move service. A Puget Sound Energy account can help you switch to paperless billing or provide a way for you to get alerts when





Puget Sound Energy , Utilities

PSE is Washington's oldest and largest privately owned and publicly regulated electric and natural gas utility. Today, PSE delivers safe, reliable and affordable energy to approximately 1.2 million electric customers and 900,000 natural gas customers across ten counties in ...



**NEWS , PSE in Montana**

PSE to build a 248 MW utility-scale wind project in Stillwater County, Montana BELLEVUE, Wash. (12/7/2023) Puget Sound Energy (PSE) announced today it is developing the Beaver Creek wind farm, a utility-scale wind project that will be located on the high



**Puget Sound Energy, AutoGrid aim to develop a 100-MW**

PSE and AutoGrid, a Schneider Electric unit, started developing a VPP in 2021 to provide a centralized application for enrolling, dispatching and assessing the performance of ...



**Puget Sound Energy**

Puget Sound Energy, Inc. [3] (PSE) is an energy utility company based in the U.S. state of Washington that provides electrical power and natural gas to the Puget Sound region. The utility serves electricity to more than 1.2 million customers in Island, King, Kitsap, Kittitas, Pierce, Skagit, Thurston, and Whatcom counties, [2] and provides natural gas to 877,000 customers [1] in ...



### [PSE . Log In to Your PSE Account](#)

Your PSE account login can help you to view your bill, set your preferences, enroll in paperless billing, get outage or usage alerts and more. Sign into my account Pay your bill, report outages and check status, track your energy usage and more.



## Contact Us

---

For catalog requests, pricing, or partnerships, please visit:  
<https://vdbconstruction.co.za>