

# Solar company wants my pge account number



 TAX FREE

1-3MWh  
BESS





## Overview

---

What is my PG&E Solar Bill?

Your average daily use is also displayed in this section of your PG&E solar bill. PG&E offers a billing structure that allows an energy consumer to optimize their production and consumption of solar energy so that they can minimize their electric bill.

Should you use solar energy credits on your PG&E electric bill?

This is especially useful for when homeowners are generating a significant amount of energy during the summer and they want to use those credits during later months when they are producing less. On your PG&E electric bill after going solar, there will be a section going over your monthly NEM balance.

Do solar customers owe PG&E?

For instance, in the image above, the solar customer currently owes PG&E a positive amount from the winter months. However, this is on a downward trajectory as the customer approaches summer and the array begins to produce more electricity.

When will PG&E transition to the solar billing plan?

Starting in 2024, PG&E will begin transitioning customers to the Solar Billing Plan. When you are transitioned, you will receive a forced True Up bill for your usage up to your transition date and then will move to monthly True Up statements. Note: Customers with CCAs or NEMA don't qualify for Net Surplus Compensation.

Are solar panels a good option for PG&E customers in California?

From PG&E's TOU payment structure to their NEM payment model, solar panel owners in California have a lot of flexibility in how they manage their energy use. If you are a PG&E customer, solar could be a great option for you.



## How do I Find my PG&E account number?

Enter the information below to look up your account number. Or, find it on page one of your energy statement in the upper right. Start entering your PG&E service address, then select the address in the dropdown. Choose to provide mobile number, email address or last payment amount. We've sent you an email containing your account number (s).



## Solar company wants my pge account number

---

### [How to locate your Service Agreement ID \(SAID\)](#)



%PDF-1.7 %âãÏÓ 1 0 obj >/Resources 323 0 R/Rotate 0/StructParents 1/Tabs/S/TrimBox[0 0 612 792]/Type/Page>> endobj 3 0 obj > stream H?OEo TTW @«úÿ\_Y5² SÝÿwÃiDB £ Bp gF"?Í\$.A AD T 'è Á w Å} Å Qqcqî Á5j;h Íkà0 3"óí©zUïU xïö¯z©S Å,3x C?}Ø Ú+'ITLRtj \_p EUR!®\_ÆLOoÛ ÝVĐđ,"ñlm¾÷ iq,â¬,Ó

### Solar Rates

Quick links CARE. Find out if you qualify for a discount. Rebates. Explore PG& E rebates for your home. Outages. Report and view electric outages. Energy used within the Baseline Allowance will be billed at the lowest price. The price of the energy goes up if you



### Why are people knocking on my door asking about my utilities bill

If you feel pressured to switch to a different energy supplier, or you think it's a scam, call the company they claim to represent first to verify or call customer service at PG& E.

### What do I need to do to start my solar account?

Our solar customer service center will help you start service at your new solar property. Be prepared to provide your service address and discuss your rate choices. Billing on your new solar rate plan should begin within 1-2 months



from the day you contact PG& E.



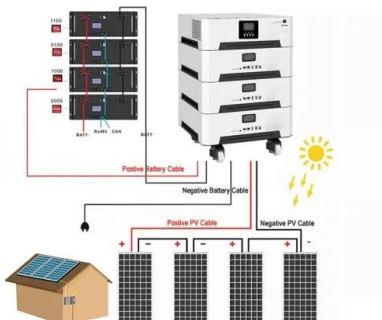
### [Getting Started with Solar](#)

Customers interested in solar technology to serve multiple eligible meters, such as a farm owner, may want to learn more about Net Energy Metering Aggregation. Get additional credits for going solar if you are enrolled PG& E's CARE or FERA program, reside in California Indian Country or live in a disadvantaged community (in the 25th percentile).



### Contact us

Get help online from PG& E. Get help by telephone from PG& E. Find information, phone and email contact. Contact PG& E departments  
Residential customer service General support:  
1-877-660-6789 (English)Spanish support:  
1-800-660-6789 (Español)Solar



### Solar FAQs

What is the new Distributed Energy Resources (DER)? What is Solar Insights? I'm interested in going solar. Does PG& E have resources to help me make an informed decision? I purchased a Solar System; how do I get a credit form to file taxes? What are some common ...



## Solar Panel Scams

August 13, 2024, NPR News -- Ari Shapiro, Host, All Things Considered and Jeff Brady, Correspondent, NPR Climate Desk Andy Milz of Flitter Milz, a nationally recognized expert in solar panel finance fraud, was recently interviewed by NPR News for a nationally-aired report concluding -- Rooftop solar has a fraud problem.



### [How do I download copies of my solar bill?](#)

How do I download copies of my solar bill? To download a copy of a past bill, sign in to your account online and open the Bill and Payment History tab. Locate the bill you need a copy of and click View Bill PDF. For a step-by-step guide to this process and a visual

### Why would a dollar company need my power bill account number?

Solar companies can't get that data just by collecting your utility account number. Typically, you have to authorize your utility to do that via an online approval engine which routes the data ...



### Why do you need my social security number to start a new account?

Your Social Security Number or other form of ID is used only to establish service with PG& E. Your credit score is not impacted by this process. Your information is secure with PG& E! We know how important it is to protect the privacy of our customers. We use





### My new location has solar installed. How do I start service on ...

Related Articles I'm starting service at a new location. How can I get a new PG& E account number online? My mobile home park just installed individual meters. How do I start service online? My new location offers the choice of getting power from a provider other



### California's New Solar Billing Program

New solar customers who apply to interconnect their solar system to the electric grid after April 14, 2023 will be enrolled on the new Solar Billing Plan approved by the CPUC. However, they will be temporarily billed on the existing Net Energy Metering 2.0 tariff



### Why would a dollar company need my power bill account number?

Solar companies in my area have a log in to the local energy company where they can pull the last 12 months of energy usage for a property. They base their solar estimates on that amount of energy usage. A month of info is not really helpful to them as energy



### Scams

Telephone, email and in-person scams If you've received a suspected scam phone call or email, contact PG& E. Report a scam call: Submit a Telephone Scam Report Form Report a scam email: Email us at ...



## Here's How to Understand Your PG& E Bill After Going Solar

For residents of California who are customers of the Pacific Gas & Electric (PG& E) company, one of the biggest questions before you decide to switch to solar is what a typical electric bill would look like once your system is installed. In this post, you will find out.



## Community Solar

Community solar projects are independent from PGE and most are designed to save subscribers money over the course of the year. Whether you own, rent or lease you can be part of a clean energy future! Income-qualified households are guaranteed bill savings

## Get Started: Solar Panel Costs, Incentives & Benefits

Don't let Oregon's weather cloud your opinion of solar. We may not be known for our sunshine, but we do get more of it than Germany, which is the world leader in solar energy generation. Whether you're thinking of installing solar panels on your rooftop or a ground mount solar system, your solar contractor can help you decide which method is best for your home or ...



## [Pacific Gas & Electric Company](#)

Pacific Gas and Electric Company (PG& E) provides natural gas and electric service to residential and business customers in northern and central California. Quick links CARE. Find out if you qualify for a discount. Rebates. Explore PG& E rebates for your home.



### **My new location has solar installed. How do I start service on ...**

Related Articles I'm starting service at a new location. How can I get a new PG& E account number online? Can the start date at my new location be different from the stop date at my current location? My mobile home park just installed individual meters. How do I



### [Account options & preferences](#)

Link to a customer account registered by or for the customer of record Create an additional online account However, customers with online accounts can still share their data with a third party. Log in and go to Share My Data to: Authorize third-party access to

### [PG& E Customer Utility Bill FAQ's](#)

You'll see the basics, like your service address, invoice date, service dates, account number, previous month's balance, the total amount due, due date, and where to send your checks (in ...



### [How do I understand my solar bill?](#)

How do I understand my solar bill? We're here to help! Our guides provide detailed breakdowns of charges and show where to find important information on your bill. Visit How to read your solar ...



### Why do solar companies want to see my past year's energy bills ...

Why do solar companies want to see my past year's energy bills before they install solar panels? Previous Next It is difficult to determine the true value of solar energy. Do you measure it by how much money it saves each individual customer on their energy



### [The Sun is Shining for Solar Customers](#)

about my electric account or VNEM statements? Contact PG& E's Solar Customer Service Center at 1-877-743-4112 for any account questions. The Solar Customer Service Center is available ...



### Do Solar Companies Really Need to See Your Utility ...

Your utility account number is only one part of your utility account. Without your password and answers to other security questions that would be required to access your account, there is very little chance anyone from our company ...



### [Billing, Payments & Financial Assistance](#)

I want to enroll in CARE, FERA or Medical Baseline. Why can't I see the programs under Rate Plans and Options? CARE, FERA, and Medical Baseline are not rate plans so enrolling and changing account settings for CARE, FERA or Medical Baseline is not





### Can I transfer service to my new residential property?

You can transfer service online by logging into your account, selecting Service Requests, and choosing Start, Stop or Transfer service. For the new address, you will need to choose your new rate as well as your start date, and for the address you are leaving, you



### Unsure why my PGE bill has jumped significantly : r/solar

Unsure why my PGE bill has jumped significantly Discussion I'm in San Jose. PV + battery installed in 2018 (NEM2). I know there has been some kind of switch over to San Jose Clean Energy, and my electric bill last month was \$600+, which I thought was the

### Local utility company (PG& E) not crediting solar surplus

Hi everyone, this may sound crazy, but very intermittently, PG& E does not credit us for the surplus solar we send back to them. Remove and blur anything you dont want shared (Address, account numbers, etc ). I'd recommend if you do this making an



### Your Energy Statement

How can I tell which charges belong to a specific meter or address if I have more than one? If you have more than one meter listed on a single account number, your bill separates the charges based on address and meter on page three. A more in-depth breakdown





## Contact Us

---

For catalog requests, pricing, or partnerships, please visit:  
<https://vdbconstruction.co.za>