

Solar log inverter





Overview

Which Inverter models are compatible with the solar-log base?

The Solar-Log Base is compatible with all standard inverter models. For connecting meters with S 0 interface. For connecting components with RS485 or RS422 interfaces. A USB stick can be connected for safe and quick manual installations of new firmware updates, configurations, and backups.

Can the solar-log 50 be connected to a compatible inverter?

The Solar-Log 50 gateway can be connected to compatible inverters via Ethernet. The Solar-Log 50 acts as a gateway between the PV plant and the Solar-Log WEB Enerest™ 4 portal. The Solar-Log WEB Enerest™ online portal expands the display and monitoring function of the Solar-Log™.

How do I install a solar-log X2 inverter?

- Installation steps • Switch off the inverters and Solar-Log™. Page 222 Procedure Insert the plug into the X2 socket on inverter 1. Insert the other end of the wire into the X2 socket on inverter 2. Connect the other inverters to each other in the same way. Terminate in the last inverter. Communication address must be allocated.

Does the solar-log™ work with inverters?

The Solar-Log™ is compatible with inverters from all major manufacturers. The sensors measure solar irradiation, temperature and wind speed. They can even be combined with some inverters on an RS485 bus. The meter can record your consumption data or serve as an inverter and measure the power from incompatible inverters.

What is a solar log™ compatible inverter?

verters used allow the Solar-Log™ to limit the output. There is a major difference between Solar-Log™ compatible inverters when it comes to power reductions. Some inverters cannot be limited to 0 watts or 0% of the



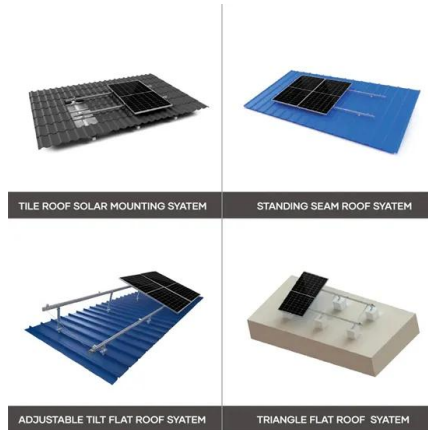
generator output; they produce a certain amount of residual power even when the output is set to zero. This needs to con.

How do I install a solar-log RS485 inverter?

In the inverter, set the DIP switch for the terminal resistor to ON. Screw the front plate inverter on again if no other inverters are to be connected. Insert the terminal block connector into the Solar-Log™ RS485 socket. Page 138
Unscrew the front plate of the inverter as shown in the inverter's instructions.



Solar log inverter



Manuale di installazione

8.6 1000, 500Solar-Log : Definizione della sequenza di inverter (Base/Sequenza inverter) ..
135 8.7 1000, 500Solar-Log : Riconoscimento successivo in caso di scambio di inverter (Base/Inverter 8.8 1000, 500, 200Solar-Log : Configurazione dei dati inverter

[SolarLog Datasheet Solar-Log Base EN](#)

The new revolutionary Solar-Log™ generation combines smart functionality with greater flexibility for more efficient control, management and monitoring* of PV plants. For you, this means: ...



[Assistenza tecnica Solar-Log Italia](#)

Solar-Log nasce come monitoraggio indipendente per gli impianti fotovoltaici. Compatibile con oltre 110 produttori diversi d' inverter, controlla i dati di ogni singolo inverter, contatore e batteria, a lui collegato. Inoltre, dispone delle ...

Solar-Log

Home Monitoring Solar-Log No products were found matching your selection. Show All Categories Energy Mobility Heat pumps Inverter Mounting Systems Optimizer Other PV Modules Special Promo Stand Alone Storage Battery No product categories exist.



Solar-Log(TM) unterstützte Komponenten , Solar-Log GmbH

Komponentendatenbank - Hier finden Sie die von Solar-Log unterstützten Komponenten 130 Hersteller 2.300 Komponenten DE Our Web Page in English France Francais Germany Deutsch Italy Italiano Spain Espanol Konfigurator Komponentendatenbank

Status / Errors

Move to Solar-Log WEB Enerest 4 Solar-Log Hardware Solar-Log WEB Enerest 3 Blogs Apps draw.io Diagrams Online Help // S / Status / Errors Status / Errors Eric Börngen Tala Zeidan (Deactivated) Owned by Eric Börngen Last updated: Oct 15, 2024



[SolarLog Datasheet Solar-Log Base EN](#)



Technical Data Solar-Log Base 15 Solar-Log Base 100 Solar-Log Base 2000 Basic Functions Maximum plant size 15 kWp 100 kWp 2 MWp Inverter connection options Ethernet, 2x RS485 or 1x RS422 Battery storage: visualization, charging time shifts



DATALOGGER SOLAR-LOG(TM) 1200

Solar-Log 1200 è il prodotto di punta della gamma Solar-Log. È un datalogger ideato per effettuare il monitoraggio di impianti fotovoltaici di potenza fino a 100 kWp e un massimo di 100 inverter. Solar-Log 1200 può essere comandato direttamente dal TFT-Touch-Display oppure da PC mediante web browser, tramite i quali è anche possibile visualizzare le analisi grafiche dei ...



SOLAR-LOG 1200 - MONITORAGGIO FOTOVOLTAICO FINO A ...

Solar-Log 1200 è compatibile con tutti gli inverter disponibili sul mercato. Si possono collegare fino a un massimo di due marche di inverter per un totale di 100 kWp. Funzioni - Solar-Log Easy Installation La ricerca inverter e l'accesso a Internet avvengono in



Manuale V.4.2

Cavi per il collegamento del Solar-Log all'inverter. o Set di cavi preconfezionati, adatti per i rispettivi inverter, sono disponibili come accessori. I set di cavi hanno una lunghezza di 3 m. o Se si desidera collegare più inverter ad un Solar-Log, è necessario del o

PUSUNG-R (Fit for 19 inch cabinet)



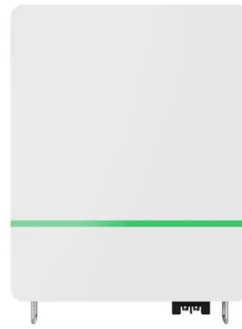
Solar-Log Base

4 Dati tecnici Solar-Log Base 15 Solar-Log Base 100 Solar-Log Base 2000 Funzioni base
Dimensioni max. impianto 15 kWp 100 kWp 2000 kWp Possibilità di collegamento inverter Ethernet, 2x RS485 o 1x RS422 Le batterie e i sistemi: Visualizzazione, Posticipo



for Solar-Log Base

The mode „Utility Meter“ can now be chosen (only Solar-Log Base 2000). Configuration / Feed-In Management / Plant parameters: When changing „Agreed supply voltage in the medium-/low-voltage network“ or „Agreed refe-



[for Solar-Log 250, 300, 1200, 1900 and 2000](#)

Adaptions Huawei V1: o All Firmware versions of the Huawei inverters 8-40 KTL can now communicate with Solar-Log . Bugfixes o The timezone GMT +10:00 resulted in a wrong system time. Fixed. Webinterface: o Configuration / Devices / Configuration

Solar-Log Base

Interface Solar-Log Base 15 Solar-Log Base 100 Solar-Log Base 2000 Inverter interfaces RS485/RS422 - interface 2x RS485 or 1x RS422 2x RS485 or 1x RS422 2x RS485 or 1x RS422 RS485/RS422 - interface usage Inverter connection (Fronius / Sunville can



[Funzionamento ed esempi di applicazione](#)

2 Editore: Solar-Log GmbH Fuhrmannstr. 9 72351 Geislingen-Binsdorf Germany International support Tel.: +49 (0)7428/4089-300 e-mail: info@solar-log Contatto: https:// Italy Technical support: +39 0471 631032 France Technical support





SolarProfit Portal Log in

SolarProfit Portal is provided for end users to manage and monitor the solar power plant, enterprise customers to manage franchise. The user can check the real time generation, running status and history information. Idioma Español English Sin cuenta



FAQ, Tipps & Antworten

In principle, all Solar-Log models (Solar-Log Base 15, 100 and 2000) are capable of reliably monitoring a PV plant. The models differ primarily in how large the plant is. The Solar-Log Base 15 can be connected up to a plant size of 15 kWp, the Solar-Log Base 100

SOLAR-LOG INVERTER INSTALLATION MANUAL Pdf Download

- o Installation steps
 - o Allocate communication address
 - o Switch off the inverters and Solar-Log
 - o Install the RS485 interface in the inverter
 - o Connect inverters to the Solar-Log
 - o Connect the
- ...



[Performance Monitoring and Control](#)

Solar-Log® WEB Enerest(TM) is an enhanced performance monitoring and management tool for industrial, commercial, and residential fleets. Detailed performance insight compares inverter output and performance deviations before they can have a lasting negative effect on solar plant return. Better diagnostics lead to faster recovery and less downtime. Eliminate downtime by ...



Solar-Log Base

Inverters The new generation Solar-Log Base is compatible with inverters from all the major manufacturers. 2 x RS485 or 1 x RS422 and 1 x S 0 To connect components. USB Connection A USB stick can be connected for safe and quick manual installations of



Monitoring Portal

All Trannergy inverter support Solar-Log via RS485 Interface. Support Power Management function and auto configuration. Solar-Log is a monitoring hardware and software solution popular in Germany.

SOLAR-LOG 300 - MONITORAGGIO FOTOVOLTAICO FINO A 15KWP

Solar-Log 300 può essere impiegato in impianti di dimensioni fino a 15 kWp indipendentemente dalla quantità di inverter. Il nuovo modello può quindi monitorare piccoli impianti con due o tre inverter di un'unica marca senza difficoltà. Funzioni - Solar-Log Easy



Components Connection Manual FW6.x (V1.31) Solar-Log(TM)

2 Publisher: Solar-Log GmbH Fuhrmannstr. 9 72351 Geislingen-Binsdorf Germany International support Tel.: +49 (0)7428/4089-300 e-mail: info@solar-log Contact: [https:// ...](https://...)



Domande frequenti

In pratica, tutti i modelli Solar-Log (Solar-Log Base 15, 100 e 2000) sono in grado di monitorare in modo affidabile un impianto fotovoltaico. I modelli si differenziano principalmente per le dimensioni dell'impianto. Il Solar-Log Base 15 può essere collegato fino a un



Modular design,
unlimited combinations in parallel
BUILT-IN DUAL FIRE PROTECTION MODULE



Leistungen für die Photovoltaikanlage , Solar-Log GmbH

Entwickelt im Hause der „Solar-Log GmbH Dem Pionier und führenden Hersteller für PV-Monitoring, Smart Energy, Einspeisemanagement und Dienstleistungen in den Bereichen Strom und Wärme. Solar-Log(TM) steht für ...

[Scarica i manuali , Solar-Log GmbH](#)

Avete bisogno di ulteriori informazioni? Qui potete trovare tutti i manuali Solar-Log . Regole Sono accettate solo parole con 2 o più caratteri Max 200 caratteri totali Lo spazio è utilizzato per dividere le parole; "" può essere usato per cercare un'intera stringa (non la



Contact Us

For catalog requests, pricing, or partnerships, please visit:
<https://vdbconstruction.co.za>