

Solar panel beam support



18650 CELL



18650 Battery Pack 2S1P



18650 Battery Pack
4S1P





Overview

Do solar mounting structures support solar panels?

These practices ensure that the solar mounting structures not only support the panels but also contribute to the overall efficiency and return on investment (ROI) of the solar energy system. Peering into the future, we explored trends and innovations shaping solar mounting structures solar panel mounting is continuously evolving.

Can a solar panel support structure take rotational loads for 90 0?

In the present work, a solar panel supporting structure is designed to take rotational loads for 90 0 for safe operation. So the design should consider the loads coming on the structure for 90 0 rotation along with inertia effect of the rotating members.

Can a solar array support structure withstand a wind load?

Even fixed solar array support structures have sophisticated design, that needs to be analyzed and often improved in order to withstand the wind load. The same applies of course to adjustable designs to an even greater extend. The analysis has to be carried out for many wind directions.

How long do solar panel support structures last?

International regulations as well as the competition between industries define that they must withstand the enormous loads that result from air velocities over 120 km/h. Furthermore, they must have a life expectancy of more than 20 years. In this paper, the analysis of two different design approaches of solar panel support structures is presented.

Are ground mounting steel frames suitable for PV solar power plant projects?

In the photovoltaic (PV) solar power plant projects, PV solar panel (SP) support structure is one of the main elements and limited numerical studies exist on PVSP ground mounting steel frames to be a research gap that has not be



addressed adequately in the literature.

What are the advantages of solar panels?

This system has the advantage that light beams are all day long normal to the surface of the panels. The fact that these structures have to support a large area of solar panels (in both structures the area is about 50m²), makes them vulnerable to wind action.



Solar panel beam support



Types of Mounting Structures for Solar Panels

Solar panel mounting structures serve as the foundational pillars that support and stabilize solar energy systems. These structures are meticulously designed and engineered to ensure that solar panels are ...

Large span for solar mounting rails? , DIY Solar Power Forum

The structural engineer has the support beams 14'9" apart. Is there a manufacturer that has a solar mounting rail that can span almost 15 feet? Bluedog225 Solar ...



[Beam Outback 6W Solar Panel BMSLR6-1](#)

All BEAM Outback solar panels come with a 12 month warranty Specifications. Beam Outback 6W Solar Panel Specifications. Kit Contents. 1x 6W Solar Panel: Visit our support page to download manuals, qsg, firmware upgrades for ...

[Elevated Solar Structures , Custom Designed](#)

As a custom manufacturer, CBC Steel Buildings is able to design and manufacture steel structural systems to support solar panel installation projects for a variety of applications. Our structures ...



\$11 DIY Portable Solar Panel Stand: 7 Steps (w/ Photos)

Try out your snazzy new homemade solar panel stand by standing up your panel. Admire its beauty ?. And pat yourself on the back. You did good. Step 7: Test Your DIY ...



Beam Global EV ARC(TM) Questions Answered to Drive on Sunshine , Beam ...

When the red light is on, the batteries are low. This is normal and you can still plug in. Charging will start when solar energy has recharged the batteries enough to continue charging.



Is my roof suitable for solar panels? [UK checklist]

Most UK roofs are strong enough to hold solar panels for their entire lifespan - which can last 40 years or more. This is because a solar panel system usually weighs about 20kg per square metre, which the great majority ...





What Steel Products go into Solar Installations?

Steel components such as tubes, purlins, trusses, and beams are crucial in providing foundational support and shaping the primary structures of solar installations. These components undergo steel galvanization post ...



Types of Mounting Structures for Solar Panels

The Unsung Heroes of Solar Energy. While solar panels are the face of photovoltaic energy, the solar mounting structures are its backbone. They provide the necessary support, ensuring that the panels remain secure ...

Is Your Roof Strong Enough for Solar Panels? , Paradise Energy

Typically, either 60-cell or 72-cell solar panels are used for residential solar installations, but only 72-cell panels will be used on commercial installations. At Paradise Energy, we offer our ...



(PDF) Analysis and Optimization Solar Panel ...

In the present work, a solar panel supporting structure is designed to take rotational loads for 90 0 for safe operation. So the design should consider the loads coming on the structure for 90





Why Galvanised Steel is Ideal for Solar Panel Support Systems

Why Choose Galvanised Steel for Solar Panel Support Systems? Now that we understand what galvanised steel is, let's explore why it's the ideal choice for supporting solar panels. 1. ...

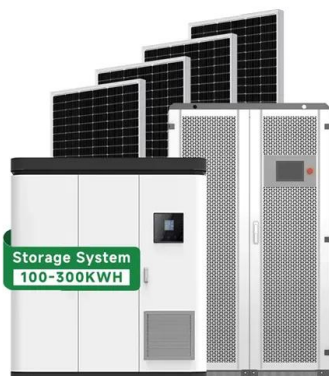


[Solar Panel Fixing Options](#)

Here is a piece on Solar Panel Fixing Options built to help Developers, Contractors, Architects, and Homeowners grasp what's on offer for fixing PV panels. It is also vital that the roof ...

[ANALYSIS OF SOLAR PANEL SUPPORT STRUCTURES](#)

around 2 axes as shown in Figure 2. This system has the advantage that light beams are all day long normal to the surface of the panels. The fact that these structures have to support a large ...



[Beam Outback 20W Solar Panel BMSLR20-1](#)

A 20-Watt solar panel made for the Australian conditions. Fast charging and water resistant featuring LED charge status. Suitable for smaller devices such as phones, tablets and gaming ...



Solar panel

Solar array mounted on a rooftop. A solar panel is a device that converts sunlight into electricity by using photovoltaic (PV) cells. PV cells are made of materials that produce excited electrons ...



Support structures for photovoltaic panels , Budmat PV ...

We specialize in the production of steel support systems for photovoltaic farms, home solar systems (roofing and above ground), carports, as well as cold-bent structures, i.e. roof purlins, wall transoms etc.

[Support Structure for Solar Panels](#)

MR Engineering was retained by it's client for structural design and engineering of support structures/skids for couple of solar panel masts. The solar panel had sizes of 78.5 ...



There are solar ground-mount solutions for any type of soil

I-beams. I-beams are a common component across the field of construction, used as structural supports in horizontal and vertical applications in buildings. They are also ...



Solar Panel Mounts for Roof, Pole & Ground Mount Solar Systems

Since 1996, Solar Electric Supply has supplied the finest solar panel mounts from reputable manufacturers. Whether a solar roof mount, ground mount, top of pole mount, side of pole ...

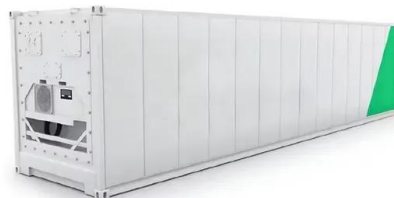


Steel vs concrete support structures for solar panel installations

Steel and concrete are commonly used for solar panel support structures because of their high strength-to-weight ratio and durability. Steel structures are often prefabricated, allowing for ...

[SolarBeam - SA'S Leading Solar provider](#)

SolarBeam is the longest-operating Solar company in Africa, powering African families and institutions since 1978. With a proven track record that we are proud of, given our experience in Africa's harsh climatic conditions, you can always ...



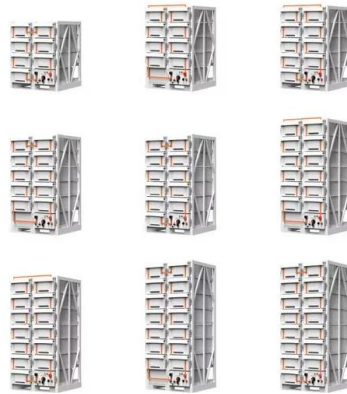
What piles are used for Solar Farm Foundations?

H-beams, also known as H-section steel beams, are structural steel beams in the shape of an "H." They are commonly used in the construction of solar farms to provide support and structure for the solar panels. These ...



How Are Solar Panels Supported?

Solar PV installations require support structures, commonly referred to as racking or mounting, to secure the panels to the ground or building roof. For ground mounted structures racking may be mounted onto ...



Structural Requirements for Solar Panels -- Exactus ...

ASCE 7 Guidelines. The American Society of Civil Engineers (ASCE) provides guidelines for the structural design of solar panel installations through their publication, ASCE 7 1. These guidelines cover the essential ...

Contact Us

For catalog requests, pricing, or partnerships, please visit:
<https://vdbconstruction.co.za>