

# Solar panel structure requirements





## Overview

---

PV arrays must be mounted on a stable, durable structure that can support the array and withstand wind, rain, hail, and corrosion over decades. What are the structural requirements for solar panels?

Structural requirements for solar panels are crucial to ensure their durability, safety, and efficient performance. These requirements vary depending on the type of installation, such as rooftop or ground-mounted systems, as well as the specific location and environmental factors.

What are the design and engineering requirements for solar panels?

These requirements vary depending on the type of installation, such as rooftop or ground-mounted systems, as well as the specific location and environmental factors. Proper design and engineering of solar panel structures must take into account several factors, such as wind loads, snow loads, and seismic forces.

Do solar panels comply with building regulations?

Your solar panel system must comply with building regulations in terms of structural integrity, electrical safety and fire safety. These regulations may vary depending on the size and type of the installation. It's advisable to work with accredited installers who are familiar with these requirements.

What is the structural load of solar panels?

The structural load of solar panels refers to the weight and forces a solar system exerts on a building or structure. This can include the weight of the panels, mounting system, and other related equipment, as well as additional loads from wind, snow, or seismic activity.

What are the design considerations for solar panel mounting structures?

Design considerations for solar panel mounting structures include factors related to structural integrity, efficiency, safety, and aesthetics. This can



involve wind, snow, and seismic loads, ventilation, drainage, panel orientation, and spacing, as well as grounding and electrical components.

How do I calculate the structural load of solar panels on a roof?

To calculate the structural load of solar panels on a roof, several factors must be considered, including the number and weight of the panels, the weight of the mounting system and components, and any additional loads from wind, snow, or seismic events.



## Solar panel structure requirements

---



### Standards and Requirements for Solar Equipment, Installation, ...

building height requirements, require screening of solar equipment from public view, require systems to conform to the Uniform Solar Energy Code or other fire and safety ...

### Solar Panel Mounting Structures: A Comprehensive Guide

This article aims to help you through the different types of solar panel mounting structures, exploring their definitions, benefits, drawbacks, and ideal usage scenarios. By ...



### Homeowner's Guide to Going Solar , Department of Energy

A recent study found that solar panels are viewed as upgrades, just like a renovated kitchen or a finished basement, and home buyers across the country have been willing to pay a premium ...

### DOMESTIC SOLAR PHOTOVOLTAIC

installed at the back of the solar PV modules.  
Module The Solar PV panel including all solar PV cells, frame, and electrical connections Module Array A collection of multiple solar PV ...



### [Structures for photovoltaic solar panels](#)

These structures raise the solar panels to a certain height above the ground, which allows better ventilation and prevents the accumulation of dirt under the panels. They are ideal for installations on uneven terrain or for those ...



### Roof-Mounted Solar PV Panels - Part 1: Structural Code Requirements

For example, ASCE 7-16 now clearly states that the weight of solar panels and their support are to be considered as dead loads [1], roof live loads need not be applied to areas covered by ...



### Structural Calculations for Solar Panel Installation

Height, load, pressure and even climate are all taken into account, as is any specific requirements for access and maintenance. Safety is of course a key consideration. If the current roof ...

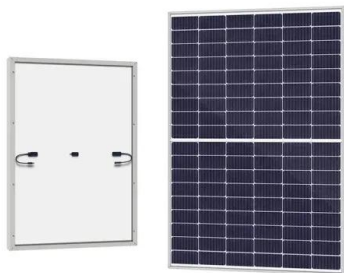
Nominal Capacity  
**280Ah**  
Nominal Energy  
**50kW/100kWh**  
IP Grade  
**IP54**





## An Introduction to the New ASCE Solar PV Structures Manual of ...

Chair ASCE Solar PV Structures Committee  
steven.gartner@hdrinc National Council of  
Structural Engineers Associations , 1. Become  
familiar with the fundamentals ...



### [LABC Guide to retrofitting solar panels](#)

Photovoltaic and solar thermal collector panels are being increasingly added to existing roofs. This best practice note provides guidance on the effect of retro-fit installation of panels on ...

## Calculating Your Solar Panel Requirements: A Step-by-Step Guide

Key Takeaways. Evaluate personal energy usage against the 10,632 kWh national household average for tailored solar solutions. Use local peak sunlight hours in ...



## Correct Installation of Photovoltaic (PV) System

If 6 PV panels are erected on an independent supporting structure and the weight of each PV panel is around 26kg. The weight of the system supported by the structure ...



## How to Build a Solar Farm: A Step-by-Step Guide

Inverters: Select inverters compatible with the chosen solar panel technology and meet the system's electrical requirements. Consider factors such as efficiency, reliability, monitoring ...



## Basic Components Needed for Solar Panel System Installation

Fig - 100A, 12-48V, Max 170A, 150V, MPPT Charge Controller (3) Battery. Batteries are used for backup charge storage. there are different types of batteries used in ...

## Technical specifications for solar PV installations

demand during the solar production period which occurs around midday. Below is a typical high rise office building load profile (blue) with a maximum demand of about 650kW. The red line ...



## Solar Panel Roof Requirements For Installation (2023 ...

Check out our official 2022 guide for solar panel roof requirements! Wondering what the roof requirements are to get solar panels? Check out our official 2022 guide for solar panel roof requirements! Most ...



## A Comprehensive Guide To Monocrystalline Solar Panels

These solar panels are constructed from a single crystal structure of silicon, which gives them their characteristic seamless look with no visible grain lines. This type of ...



### [Know your codes for solar mounting](#)

National Electrical Code . NEC 690 defines electrical safety requirements for PV systems. Equipment grounding required: Exposed non-current-carrying metal parts of PV module frames, electrical equipment and ...

## What Are the Legal Requirements for Installing Solar Panels on ...

The solar panels must not affect the structure of the roof or the appearance of the property. A certified installer must confirm the roof can bear the weight of solar panels. ...



### APPLICATION SCENARIOS



### [Requirements for installing solar panels](#)

Solar panels continue to be the most popular and viable option for homeowners looking to generate their own renewable electricity. There are lots of reasons behind the ...



## Solar Panel Installation: Understanding Ireland's Regulations And ...

A certified solar panel installer has undergone training and passed assessments that prove their competence in installing solar panels safely and effectively. Choosing a ...



## GUIDELINES FOR PLAN CHECK AND PERMIT REQUIREMENTS FOR SOLAR ...

1. Solar photovoltaic panels supported by a structure with no potential use underneath shall not constitute an additional story or additional floor area and may exceed the height limit when ...

## Sizing Solar Structure Components in Solar Panel ...

Low-rise structure: A low-rise solar mount structure is a kind of framework or support system that is intended to hold solar panels at low elevations above the ground or near the ground. Usually, these structures are ...



## Solar Photovoltaic: SPECIFICATION, CHECKLIST AND GUIDE

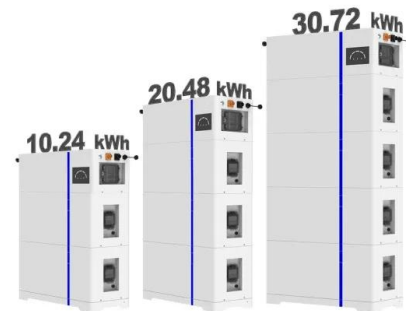
assessing a home's solar resource potential and defining the minimum structural and system components needed to support a solar energy system. The following document also provides ...



## Structural Requirements for Solar Panels -- Exactus Energy

Solar panel installations on existing structures must take into account various load factors to ensure the safety and longevity of the structure. This section discusses the ...

### ESS



### How Many Solar Panels Do I Need To Power a House?

If we use 400W, that would mean you need 13 solar panels. System size (5,200 Watts) / Panel power rating (400 Watts) = 13 panels. Of course, the easiest way to know how many solar panels you need is to team ...

## Contact Us

---

For catalog requests, pricing, or partnerships, please visit:  
<https://vdbconstruction.co.za>