

# Solar panels power output





## Solar panels power output

---



### Solar Panel Output (Average energy output explained)

Solar panels vary in power output and have a rated power output in watts. A panel's actual power and energy output varies with location, time of day, and time of year. Online tools can calculate the output of your solar array, and guides can assist you with the design and installation of your array.

### Understanding Solar Panel Output: How Much Energy Does One Solar Panel

This straightforward formula offers a reliable way to gauge a solar panel's average output, helping you understand just how much energy one panel can produce. Remember, the specific wattage of panels can vary, and environmental factors may influence the actual amount of solar power generated. Understanding Solar Panel Energy Output



### Solar Panel kWh Calculator: kWh Production Per Day, Month, Year

To calculate solar panel output per day (in kWh), we need to check only 3 factors: Solar panel's maximum power rating. That's the wattage; we have 100W, 200W, 300W solar panels, and so ...

### [Solar Panel Ratings Explained](#)

The Maximum Power Current rating ( $I_{mp}$ ) on a solar panel indicates the amount of current produced by a solar panel when it's operating at



its maximum power output (Pmax) under ideal conditions. In other words, Imp ...



### [The Ultimate Guide to Solar Panel Output](#)

Note: Solar panels do not produce 100% rated power output. Therefore, if the solar panel power output is 75-85% of their rated power output, consider them highly efficient. Factors Affect The Solar Panel Output . Now that we've discussed how to test solar panel output, it's time to understand the factors that affect the output.



### **How Much Power Does a Solar Panel Produce? Solar Panel Output ...**

On average, a standard residential solar panel, typically rated between 250 to 400 watts, can generate approximately 1 to 2 kilowatt-hours (kWh) of electricity per day under optimal conditions. To estimate the power output of a solar panel system, multiply the wattage rating of a single panel by the total number of panels installed. For example, if you have a setup with 20 ...



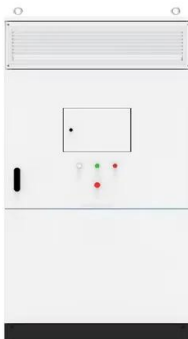
### [How Much Energy Does a Solar Panel Produce?](#)

To calculate how much a solar panel produces per day, simply multiply the solar panel output by the peak sun hours: 400W (output) x 4.5 hours = 1,800 Watt-hours per day. We typically account for 3% loss in converting the solar energy output from DC to AC, which comes to roughly 1,750 Watt-hours.



### How Much Electricity Do Solar Panels Generate in Ireland?

The output from a solar panel depends on its capacity, but on average, a typical residential solar panel with a power output of 300 watts can generate around 1.2 - 1.5 kWh per day, given sufficient sunlight.

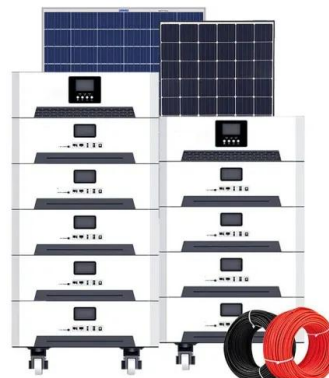


### How To Calculate Solar Panel Output?

How many kWh are produced by a solar panel? The amount of electricity produced by a solar panel depends on several factors, including its size, efficiency, location, and weather conditions. The average solar panel in the United States produces around 300 watts of power per hour, or 0.3 kWh (kilowatt-hours).

### How Much Solar Power Can My Roof Generate?

In a perfect world, the average roof in the U.S. can generate around 35,000 kilowatt-hours (kWh) of solar electricity annually--far more than the average home's annual electricity usage of 10,600 kWh. Realistically, your ...





## Understanding Solar Panel Output: How Much Energy ...

This straightforward formula offers a reliable way to gauge a solar panel's average output, helping you understand just how much energy one panel can produce. Remember, the specific wattage of panels can vary, and ...

### How Much Energy Does a Solar Panel Produce?

The amount of energy that a solar panel can produce will vary depending on several factors, however, as a rule of thumb, you can expect a 1kW solar panel to produce around 4kWh of electricity a day. Based on this general guide, a typical 4kW solar system will produce around 16kWh of power per day, provided it has prime location and weather



### Commercial and Industrial ESS

Air Cooling / Liquid Cooling

- Budget Friendly Solution
- Renewable Energy Integration
- Modular Design for Flexible Expansion



### How To Calculate Solar Panel Output

Calculating the output of your solar panels isn't as simple as you might think. While the rated power (e.g., 100W or 400W) indicates the maximum amount of electricity a PV panel can generate per hour, many factors come into play that affect how much power output you'll actually get.. The truth is, there are so many variables involved in how much electricity a solar ...

## How to Test Solar Panels: Output, Amps & Watts

Solar panels typically produce 70-80% of their rated power output, only reaching close to 100% in the industry-standard set of test conditions. Also, keep in mind that I tested this panel in November while there was a little haze in the sky.



### Solar Panel Output Explained

Final Thoughts on Solar Panel Output. Solar panel output is the amount of electrical power the panels can produce. It can be affected by the type of panels you install, their orientation and angle, shading, ambient temperature, your location in the UK, and the quality of the system and installation. Sources and References

### How Much Power Does A Solar Panel Produce?

What does 'solar panel power' mean? Solar panel power refers to the amount of solar energy a panel produces in Standard Test Conditions (STC). All top-quality panels on the market are tested in a lab with a specific temperature (77°F), amount of sunlight (1000 watts per square metre), and air mass (AM1.5).



### **Understanding Solar Panel Performance Metrics**

Your solar panel's power output is measured in watts (W) and is calculated by multiplying volts x amps, where voltage is the amount of force or pressure behind the electricity and amperes (amps) refers to how fast it flows. Most solar panels on the market produce between 250 and 400 watts of power. Pricing for solar panels is typically



### How much energy does a solar panel produce?

A solar panel's output rating, or wattage, is the best indicator of its power production. Especially if you have a small roof, it's important to choose a solar panel model ...



### **How to understand and compare solar panel specifications**

The power output of solar panels is a fundamental rating measured under Standard Test Conditions (STC), a standardized set of laboratory conditions for testing all solar panels. Sometimes referred to as the panel's wattage or size, the power output describes the amount of power a solar panel can produce.

### Solar Panel Wattage & Output Explained

Solar panel wattage is the total amount of power the solar panel can produce in a given time. It is usually measured in watts and calculated by multiplying the solar panel's voltage, amperage, and the number of cells. The ...



### **How Much Electricity Do Solar Panels Generate in ...**

The output from a solar panel depends on its capacity, but on average, a typical residential solar panel with a power output of 300 watts can generate around 1.2 - 1.5 kWh per day, given sufficient sunlight.



### Solar Panel Output: Understanding the Numbers

The higher the output of a solar panel, the more electricity it can produce. How is Solar Panel Output Measured? Solar panel output is measured using key metrics such as peak watt (Wp) and average daily energy production (kWh). Peak watt refers to the maximum power output a solar panel can generate under laboratory conditions, with direct



### **Solar Panel Output: How Much Power Does a Solar Panel ...**

To fully power an average home using 11,000 kWh per year, a typical solar power system will need between 21-24 panels of 320 watts each. The exact number and wattage of ...

### **7 Best Solar Panels For Your Home of 2024 , U.S. News**

Power output is arguably the most important factor to consider when looking at solar panels. Panels with higher power outputs may cost more upfront, but they generate more power, so they'll



### **Solar Panel Calculator**

To find the solar panel output, use the following solar power formula:  $output = solar\ panel\ kilowatts \times environmental\ factor \times solar\ hours\ per\ day$ . The output will be given in kWh, and, in practice, it will depend on how sunny it is since the ...



## How Much Electricity Does A Solar Panel Produce?

Calculating the energy output of a solar system can be rather complex. The formulas to use are difficult for a person that has no or little knowledge of elementary physics. hi there. just wondering if you can help me optimize my 1kw inverter and system. i currently have 6 x 170w panels. rated power output 1.02. i was getting a 2kw system



## Solar Panel Output: How Much Power Do They Produce?

This increases the solar panel's power output, often by 20-40% compared to fixed, non-tracking systems. 6. How do the size and number of solar panels impact power production? Larger solar panels and increased quantities of panels can generate more electricity due to their increased surface area. It is important to consider available roof or

## How much electricity do solar panels produce?

Solar panels generate electricity during the day. They generate more electricity when the sun shines directly on the solar panels. Figure 1 shows PV generation in watts for a solar PV system on 11 July 2020, when it was sunny throughout the day and on 13 July when there was a mixture of sun and cloud.



## [Solar Panel Wattage & Output Explained](#)

Solar panels are rated by their power output, measured in Watts. This rating indicates how much electricity a panel can generate per hour. A higher solar panel wattage rating means more power production. This information is crucial for understanding a solar panel's capacity and selecting equipment that meets their specific



energy needs.



### Solar Panel Output: How Much Electricity Can You Generate?

Understanding the factors that affect solar panel output is crucial in determining how much electricity you can generate with solar power. By considering your location, and panel quality, ...



### How Much Electricity do Solar Panels Produce?

Cell Count vs Wattage. When we discuss output of the solar panel, we usually use it's wattage. For residential applications, a typical solar panel is about 260 - 270 watts, meaning that in perfect conditions that solar panel could produce 260 watts of power in a given instant (for reference, an LED light bulb uses about 10 watts).

### Solar panel output: How much electricity do they produce?

Types of solar panels. The type of solar panels you get can affect electricity output, since some solar panel types are more efficient than others.. A solar panel's efficiency indicates how well it converts sunlight into electricity. The higher the efficiency rating, the more electricity it will produce per square metre. Here's what you can expect from different solar panel types:





## Contact Us

---

For catalog requests, pricing, or partnerships, please visit:  
<https://vdbconstruction.co.za>