

Specification requirements for photovoltaic support bottom beam





Overview

What is the design angle of a fixed photovoltaic module?

The software SAP2000 has strong functions, design of the fixed photovoltaic support. Japan. The degree of the design angle of PV modules was $\times 991$ mm \times 40mm. The single photovoltaic array unit was arranged into 4 rows and 5 columns. According to the basic parameters were shown in table 1.

What are solar photovoltaic design guidelines?

In addition to the IRC and IBC, the Structural Engineers Association of California (SEAOC) has published solar photovoltaic (PV) design guidelines, which provide specific recommendations for solar array installations on low-slope roofs 3.

What are the design and engineering requirements for solar panels?

These requirements vary depending on the type of installation, such as rooftop or ground-mounted systems, as well as the specific location and environmental factors. Proper design and engineering of solar panel structures must take into account several factors, such as wind loads, snow loads, and seismic forces.

What are the dynamic characteristics of photovoltaic support systems?

Key findings are as follows. Dynamic characteristics of tracking photovoltaic support systems obtained through field modal testing at various inclinations, revealing three torsional modes within the 2.9–5.0 Hz frequency range, accompanied by relatively small modal damping ratios ranging from 1.07 % to 2.99 %.

What are the structural requirements for solar panels?

Structural requirements for solar panels are crucial to ensure their durability, safety, and efficient performance. These requirements vary depending on the type of installation, such as rooftop or ground-mounted systems, as well as



the specific location and environmental factors.

Can a solar array support structure withstand a wind load?

Even fixed solar array support structures have sophisticated design, that needs to be analyzed and often improved in order to withstand the wind load. The same applies of course to adjustable designs to an even greater extend. The analysis has to be carried out for many wind directions.



Specification requirements for photovoltaic support bottom beam



[Solar Structure Roll Forming Machine](#)

The Solar Photovoltaic Support Forming Machine is an advanced industrial device designed for the efficient production of solar photovoltaic (PV) support structures. With precision and speed, this machine effortlessly shapes metal ...

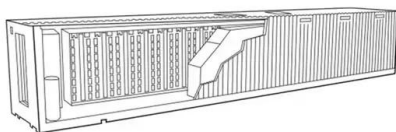
Solar Photovoltaic: SPECIFICATION, CHECKLIST AND GUIDE

Renewable Energy Ready Home SOLAR PHOTOVOLTAIC SPECIFICATION, CHECKLIST AND GUIDE i. Table of Contents. needed to support a solar energy system. The following ...



White Paper: Foundation Selection For Ground Mounted PV ...

By Andrew Worden, CEO, GameChange Racking Foundation selection is critical for a cost effective installation of PV solar panel support structures. Lack of proper ...



Stability requirements for two-beam interference lithography

Reproducible manufacturing especially of large diffraction gratings using two-beam laser interference lithography gives rise to exceptional requirements on the stability of ...



6.5.3 Steel grade and coatings

Decorative finishes should be compatible with the protective coat specification. The designer should determine compatibility in accordance with the manufacturer's recommendations. ...



Structural Integrity Requirements for Concrete Buildings

Figure 4. Structural integrity requirements for top bars of perimeter beams [7.13.2.2(a)] Figure 3. Structural integrity requirements for joist construction [7.13.2.1] Figure 5. Structural integrity ...



Design and Analysis of Steel Support Structures Used in Photovoltaic ...

photovoltaic (PV) solar power plant projects, PV solar panel (SP) support structure is one of the main elements and limited numerical studies exist on PVSP ground mounting steel frames to ...





Research and Design of Fixed Photovoltaic Support Structure ...

Industrial Standard (JIS C 8955-2011), describing the system of fixed photovoltaic support structure design and calculation method and process. The results show that: (1) according to ...



- ✓ TELECOM CABINET
- ✓ BRAND NEW ORIGINAL
- ✓ HIGH-EFFICIENCY



Understanding Glulam Specifications

unbalanced layups. A balanced layup refers to a beam where the laminations are symmetrically placed so that the top of the beam has the same tensile strength as the bottom of the beam. ...

Overhead Canopy Specifications , C-Beams , Mitchell Metals

The 10? C-Beam frame shall be welded together into a single frame unless shipping does not allow. All connections between the canopy frame and the 10? C-Beam frame shall be caulked. ...



WIND LOAD DESIGN OF PHOTOVOLTAIC POWER PLANTS BY ...

The structure of one photovoltaic panel consists of five transversal cantilever type steel frames and four longitudinal aluminum beams, supported continuously on every transversal frame. ...



3.1.10 Installation of reinforcement

Should be located near the bottom of the slab, with the main reinforcing bars placed first and the secondary bars on top: Beams: Should have the main reinforcing bars placed inside the links: Figure 2: Reinforcement ...

Sample Order
UL/KC/CB/UN38.3/UL



TECHNICAL SPECIFICATIONS FOR SOLAR PHOTOVOLTAIC LIGHTING ...

TECHNICAL SPECIFICATIONS FOR SOLAR PHOTOVOLTAIC LIGHTING SYSTEMS & POWER PACKS (Off-grid Solar Applications Scheme 2016-17) Light Source 2.0 Watts (max.)

GUIDE TO LIFTING BEAMS AND LIFTING SPREADERS

the self-weight of the beam and any allowance for uncertainty in the sharing of the load. Most lifting beams and spreaders will be designed for specific applications e.g. A lifting beam for ...



Support Beams & Load Bearing Walls

The most common support system used to replace a load-bearing wall is a beam under the ceiling and columns or posts which carry the weight down to the foundation. This method is popular because it does not require alterations to ...



[Beam clamps section of pipe hanger catalog](#)

15/16" (33.3)for B3033-5/8& 3/4 Beam Clamps
Bottom Flange Attachment Applications B3033 -
Wide Jaw Reversible C-Clamp Top Flange
Attachment Applications Material:Malleable Iron
...



Reinforcement Detailing in Beams According to IS ...

When a beam is designed with slab, called slab beam or Tee-beam, reinforcements are provided as shown in figure below. The beam is generally designed as simple beam but additional reinforcement provided on top with ...

Reinforced Concrete Beam Design {Step-By-Step Guide}

A concrete core of a high-rise building is also seen as a beam transferring the horizontal wind loads to the foundation; Office buildings; to name a few. The use of concrete is ...



Lightweight design research of solar panel bracket

increasingly high requirements. The solar panel bracket needs to bear the weight of the solar panel, and its strength structure needs to ensure that the solar panel will not deform or ...



(PDF) Concentrator photovoltaic standards: Experimental analyses ...

The continuing development and the increasing diffusion of concentrator photovoltaic (CPV) systems highlight the lack of specific international standards in the CPV ...



1mwh (500kw/1mw)
AIR COOLING
ENERGY STORAGE CONTAINER

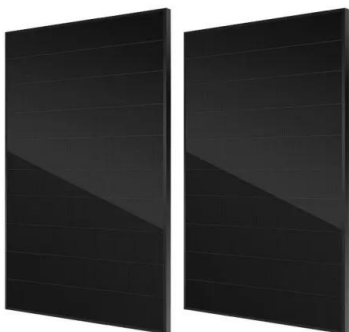


[Specification for Structural Steel Buildings](#)

- + Inserted general requirements to address minimum composite action in composite beams
- + Revised the provisions for bolts in combination with welds
- + Increased minimum pretension for ...

BEAM Plus New Buildings v2.0 (2023 Edition) Manual

exempting Project BEAM Pro/ Construction BEAM Pro's endorsement. IDCM 1 and IDCM 6 Incorporated FAQ #156 to clarify the same personnel cannot act in dual roles as Design ...



Pallet Rack Beams: Critical details that prevent beam failure

Pallet rack beams are the heavy lifters in your pallet racking system. Valuable inventory rests on these mission-critical parts in your warehouse. Yet, there are some small details that, if ...



ANALYSIS OF SOLAR PANEL SUPPORT STRUCTURES

of the solar panel array is adapted to the installation site so that the efficiency of the system is optimized. 2. An adjustable system that features mechanisms to enable it to be automatically ...



- IP65/IP55 OUTDOOR CABINET
- OUTDOOR MODULE CABINET
- OUTDOOR 5G BASE STATION CABINET
- WATERPROOF

Reinforcement Specification and Method of Beam Formwork

4. The bottom form of the beam can be omitted. The bottom form can be used to add an isolation layer on the removed masonry, then bind the steel bars of the beam, and finally support the ...

Contact Us

For catalog requests, pricing, or partnerships, please visit:
<https://vdbconstruction.co.za>