

Standard wind power generation hours





Overview

What percentage of electricity is generated by wind?

Wind energy generation accounted for 24% of total electricity generation (including renewables and non-renewables) in 2020; with offshore wind accounting for 13% and onshore wind accounting for 11%. Data on energy generation is from the UK Department of Business, Energy and Industrial Strategy's Energy Trends. 4. Business activity in wind energy.

How much electricity does the UK generate from wind?

Wind electricity generation in the UK In 2020, the UK generated 75,610 gigawatt hours (GWh) of electricity from both offshore and onshore wind. This would be enough to power 8.4 trillion LED light bulbs. Individually, both offshore and onshore wind electricity generation has grown substantially since 2009.

What is the wind energy industry like in the UK?

Exploring the wind energy industry in the UK, including energy generation, turnover and employment. Includes data from the Office for National Statistics and other official sources. This is the latest release. 1. Main points Electricity generation from wind power in the UK has increased by 715% from 2009 to 2020.

How much electricity can a wind turbine generate a day?

put from 30 MWh to 1750 MWh. The largest offshore wind turbines can generate 300 MWh of electricity in a single day!How do I know if my site i.

How does the International Energy Agency predict wind power growth?

The International Energy Agency also produces a global forecast of growth in wind generation capacity (how much wind power can be produced). Increases in capacity are expected, the size of which depend on factors like the cost of wind, policy environment and public perceptions of wind. 6. Wind energy data



7. Data sources and quality.

How fast can a wind turbine run?

Wind turbines will generally operate between 7mph (11km/h) and 56mph (90km/h). The efficiency is usually maximised at about 18mph (29km/h) and they will reach their maximum output at 27mph (43km/h). Isn't coal - a fossil fuel - needed to produce the steel that wind turbines are made from?



Standard wind power generation hours



Standards Supporting Wind Power Industry Growth

Wind speed is a key element of power performance, and, in accordance with IEC 61400-12-1 Ed. 2.0 b:2017 - Wind Energy Generation Systems - Part 12-1: Power ...

[NFU Energy wind energy guide](#)

Like any generator, a wind turbine can be very small or very large; wind power developments benefited from the Renewables Obligation (2002-2017), a scheme (megawatt-hours) per ...



Wind power , Your questions answered , National Grid ...

The UK government's British energy security strategy sets ambitions for 50GW of offshore wind power generation - enough energy to power every home in the country - by 2030. However, as wind power can be ...



[NFU Energy wind energy guide](#)

electricity generation sites in the UK can be used more efficiently, making optimal use of existing grid capacity. In some cases, sites with large scale solar and wind power can be twinned ...



[How Much Energy Does a Wind Turbine Produce?](#)

The blades of a wind turbine typically revolve between 10 and 20 times a minute, which is relatively standard for commercial-scale turbines. electricity generation ...



Wind power generation

Wind power generation forecasts are based on wind forecasts and wind turbine locations, size and capacity. The continuously updated forecast is calculated and updated every hour for ...



Wind Power Generation Forecast using Artificial Intelligence ...

Onshore and offshore wind power together have the potential to generate 86.9 GW and 6.1 GW of power, respectively, of recently commissioned capacity [4,5]. External weather factors like ...





Wind Power Forecasting Data Definitions and Exchange Standards

Wind Power Forecasting Data Definitions and Exchange Standards - An Approach for a Recommended Practice Built Upon International Standards and an Eye Towards the Future ...



Wind energy generation vs. installed capacity

Wind power generation. Wind energy generation, measured in gigawatt-hours (GWh) versus cumulative installed wind energy capacity, measured in gigawatts (GW). Data includes energy from both onshore and offshore wind sources.

Wind power

Wind energy penetration is the fraction of energy produced by wind compared with the total generation. Wind power's share of worldwide electricity usage 80% chance that wind output will change less than 10% in an hour and a 40% ...



Wind

The amount of electricity generated by wind increased by 265 TWh in 2022 (up 14%), the second largest growth of all power generation technologies. Wind remains the leading non-hydro renewable technology, generating over 2 100 ...





Renewable Energy Fact Sheet: Wind Turbines

wind power reports that the cost of wind power is nearly very competitive with those of conventional power technologies. And this does not account for the environmental and health ...



**200kWh
Battery Cluster**

Modelling and analysis of real-world wind turbine power curves

In the dataset issued by the wind farm owner the power output from the wind generator is averaged over steps of 10 min; over 52,460 recorded data points the wind turbine ...



Capacity Value of Wind Generation in India

We would like to thank Gamesa Wind Turbines Pvt. Ltd. for providing us data for wind power generation from some of their existing wind farms. We also thank Gamesa for sharing the ...



Mixture Density Networks per hour-month applied to wind power

PDF , On Nov 24, 2021, Damian Vallejo and others published Mixture Density Networks per hour-month applied to wind power generation forecast , Find, read and cite all the research you ...

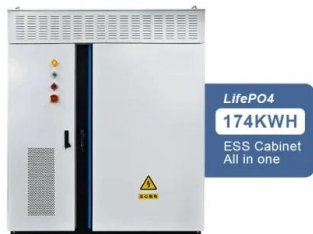
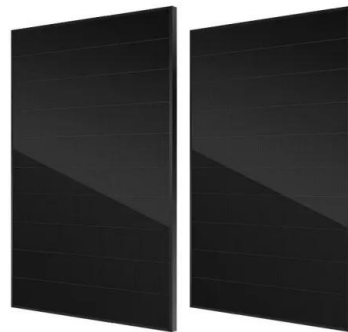


- TELECOM CABINET
- BRAND NEW ORIGINAL
- HIGH-EFFICIENCY



How Much Energy Does a Wind Turbine Produce? , BKV Energy

Wind power accounts for about 8% of global electricity generation, and countries around the globe continue to develop and scale up their wind power generation capacity. You might be curious, ...



(PDF) Understanding IEC standard wind turbine models

This article describes and exemplifies the IEC 61400-27 generic wind turbine models through an interactive multimedia learning environment - Matlab SimPowerSystems.

Wind power , Your questions answered , National Grid ...

It's not the speed, but the consistency of wind that produces the most wind power. Wind turbines will generally operate between 7mph (11km/h) and 56mph (90km/h). The efficiency is usually maximised at about 18mph ...



[Wind powered electricity in the UK](#)

of the UK's total wind generation shifted. These are shown in charts 3 and 4. Chart 3. Share of UK wind generation in 2010 Chart 4. Share of UK wind generation in 2019. Onshore/offshore ...



The Wind Factor: Understanding How Wind Speed Impacts Solar Power ...

This column delves into the intricate relationship between wind speed and solar power generation, elucidating the profound impact wind has on solar panel structures, the ...



[Wind energy industry in the UK](#)

In 2022, wind power was by far the leading renewable energy source across the country. Overall, wind power is the second-largest electricity generation technology in the UK, contributing

[Wind power in the United States](#)

Brazos Wind Farm in Texas. Mendota Hills Wind Farm in northern Illinois. Wind power is a branch of the energy industry that has expanded quickly in the United States over the last several ...



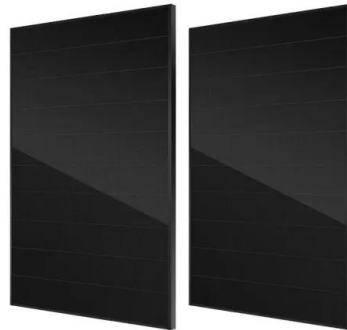
How Much Energy Does Wind Power Really Produce?

As of 2022, the United States had more than 141 GW of installed wind power capacity. Wind power has expanded substantially in recent years. However, due to numerous ...



[Wind Power Facts and Statistics , ACP](#)

Wind power capacity totals 151 GW, making it the fourth-largest source of electricity generation capacity in the country. This is enough wind power to serve the equivalent of 46 million ...

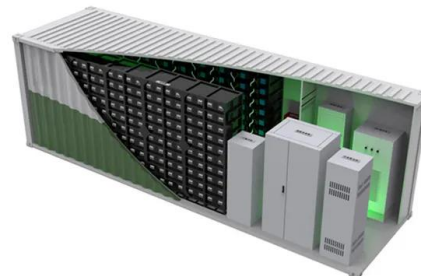


Definitions of Availability Terms for the Wind Industry

The term "availability," as used in the wind industry, is a measure of the potential for a wind turbine or wind farm to generate electrical power. If the turbine is "available" and ...

Identification of reliable locations for wind power generation ...

Wind power is one of the critical low-carbon energy sources that is expected to play a substantial role in decarbonizing electricity generation.



[Wind Power Numbers , WindEurope](#)

2 ???· How much wind was in Europe's electricity yesterday? Daily wind energy Yesterday's top 20 countries Hourly electricity mix Hourly wind energy generation Capacity factors. + -.



Contact Us

For catalog requests, pricing, or partnerships, please visit:
<https://vdbconstruction.co.za>