

# The cost of post-maintenance of wind power plants





## Overview

---

What is the operation and maintenance cost of a wind farm?

The operation and maintenance cost involves the operation and maintenance process of the wind farm in the whole life cycle, including the lease cost, insurance cost, transmission charge, maintenance cost and management cost.

How important is operating & maintenance in a wind farm?

Importance of maintenance Operating and maintenance (O&M) costs accounts for a large portion of the LCOE of an offshore wind farm, constituting 23% of their total investment cost, compared to only 5% for onshore wind turbines [18, 19]. Hence, reducing O&M costs is an effective way to control the LCOE.

Can operation and maintenance cost models be used to optimize wind turbine operations?

At present, several operation and maintenance cost models are proposed for optimizing operation and maintenance activities, which consider the impact of wind turbine status, resource availability, traffic, operation and maintenance strategy and climate influence, and are helpful for reducing the operation and maintenance cost , , .

What is the 2022 cost of Wind Energy Review?

Background • The 2022 Cost of Wind Energy Review estimates the levelized cost of energy (LCOE) for land-based, offshore, and distributed wind energy projects in the United States. • This review also provides an update to the 2021 Cost of Wind Energy Review (Stehly and Duffy 2022) and examines wind turbine costs, financing, and market conditions.

What is maintenance of an offshore wind project?

Maintenance of an offshore wind project is a broad topic. The cost of maintenance makes up a larger part of the total energy generation cost



compared with onshore wind power.

Does maintenance affect the life cycle of an offshore wind farm?

Compared with operations, maintenance is a critical element in the levelized cost of energy, given the practical constraints imposed by offshore operations and the relatively high costs. The effects of maintenance on the life cycle of an offshore wind farm are highly complex and uncertain.



## The cost of post-maintenance of wind power plants

---

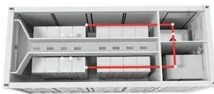
### Wind Turbine Cost: How Much? Are They Worth It in ...



Wind Turbine Maintenance Costs. Once built, maintenance is an ongoing expense. 1-2 cents per kilowatt-hour produced, or; \$42,000 - \$48,000 per year; Operation and maintenance costs can be significant, but all of these ...

### Breaking Down The Cost Of Wind Turbine Maintenance

Two components of the cost of operation and maintenance (O& M) of wind turbines are vitally important and need to be minimised: those for scheduled maintenance and ...



### On maintenance optimization for offshore wind farms

the European Wind Energy Association is to reach 230 GW of installed wind power in Europe by the end of 2020, of which 40 GW shall be generated by offshore wind power plants [4].  
1.1.1 ...

### [2021 Cost of Wind Energy Review](#)

specific wind resource conditions paired with approximate wind turbine size characteristics - Projected land-based and offshore wind cost trajectories from 2021 through 2030 used for ...



### Research on Increasing the Performance of Wind Power Plants ...

A topical issue globally is the development and implementation of renewable energy sources for sustainable development. To meet current requirements, the research in ...



### New Tendencies in Wind Energy Operation and Maintenance

Both the reduction in operating and maintenance (O&M) costs and improved reliability have become top priorities in wind turbine maintenance strategies. O&M costs ...



### Workforce and Economic Development Considerations from the ...

o The age of a wind power plant impacts workforce needs. Wind plants commissioned before 2000 require a larger workforce than wind facilities commissioned in or after 2000. Wind plants ...



## Offshore wind turbine operations and maintenance: A state-of-the ...

After maintenance tasks are planned, three operations related to the onsite maintenance make up a considerable proportion of maintenance cost, i.e., (1) the delivery of ...

TAX FREE

**Product Model**  
HJ-ESS-215A(100KW/215KWh)  
HJ-ESS-115A(50KW 115KWh)

**Dimensions**  
1600\*1280\*2200mm  
1600\*1200\*2000mm

**Rated Battery Capacity**  
215KWH/115KWH

**Battery Cooling Method**  
Air Cooled/Liquid Cooled

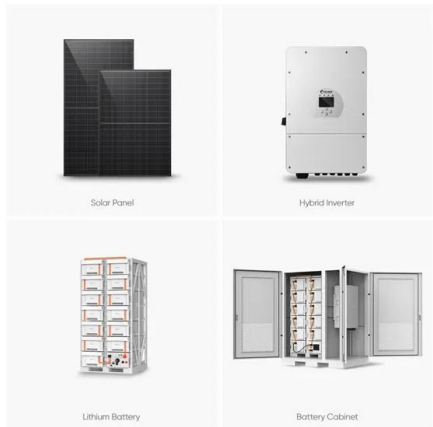


## The wind energy value chain: Operation and maintenance

Operation and maintenance costs make up a significant part of the total annual costs of a wind turbine. During the first five years of operation, the turbines would all be under warranty, but ...

### [2019 Cost of Wind Energy Review](#)

These data are supplemented with outputs from NREL's cost models for wind turbine and balance-of-system detail. The offshore reference project data are estimated from installed ...



### [Final Report Cost of Energy \(LCOE\)](#)

around EUR87/MWh. Meanwhile, despite the reduction of gas prices, LCOE of CCGT power plants have been around EUR95/MWh (20% higher than 2008 costs) while coal-fired power plants have ...



### Operation and maintenance costs of wind ...

Operation and Maintenance Costs of Wind Generated Power. Operation and maintenance (O& M) costs constitute a sizeable share of the total annual costs of a wind turbine. For a new turbine, O& M costs may easily make up 20-25 per ...



### **On Maintenance Management of Wind and Nuclear Power Plants ...**

The operation and maintenance management of wind power plants and especially nuclear power plants must always be reliable and structured. Cost effectiveness is however growing in ...

### **The Role of Advanced Technologies in Enhancing Wind Power Plant**

Accurate assessment of wind resources is crucial for the optimal siting and design of wind power plants. Traditional anemometry towers have limitations in terms of height ...



### **Life cycle cost modelling and economic analysis of wind power: A ...**

This model estimated the cost of wind turbines and power plants, and combined the layout and power generation estimation results to evaluate the economics of wind farms. ...



### Windfarm Operations and Maintenance cost-Benefit Analysis ...

Operations and maintenance (O& M) represents around one-third of the total wind power plant life cycle cost (Stehly and Duffy 2022) with annual cost ranges of \$15-\$27/kilowatt (kW)/year for ...



### Renewable Energy Cost Analysis: Wind Power

%PDF-1.4 %EUR,,^OE "~oe  
α"→°´¼ÄÄÈÌÐØÛääèìðøü 1 0 obj /Filter  
/FlateDecode /Length 4210 >> stream xoeo[  
óFr}Y\_ÑOÁ.° Ý 6/ >Øp



### Renewable Energy Cost Analysis: Wind Power

The costs that can be examined include equipment costs (e.g. wind turbines, PV modules, solar reflectors, etc.), financing costs, total installed cost, fixed and variable operating and ...



### How much does wind power really cost? , World Economic Forum

All estimates for wind power include the cost of purchasing capital and paying for operations and maintenance (O& M) of wind turbines. For the studies we examined, capital ...





### Windfarm Operations and Maintenance cost-Benefit Analysis Tool ...

This report describes the Windfarm Operations and Maintenance cost-Benefit Analysis Tool (WOMBAT), which models the operations and maintenance (O& M) phase of a wind power ...



### [Electricity generation costs 2023](#)

Onshore wind & solar PV \_\_\_\_ 12 Offshore wind \_\_\_\_ 14 Power CCUS and power BECCS \_\_\_\_ 18 Nuclear technologies \_\_\_\_ 18 The levelised cost of a generation technology is ...



**2MW / 5MWh  
Customizable**

### Experience Curves for Operations and Maintenance Costs of ...

Given the decline in investment costs for renewable energy technologies, other cost components have become increasingly important. In 2017, operations and maintenance ...



### [Renewable Energy Cost Analysis: Hydropower](#)

Figure 4.8 operations and maintenance costs for small hydro in developing countries 25 Figure 6.1: the minimum to average levelised cost of electricity for small hydropower in the European ...





### 2020 Cost of Wind Energy Review

levelized cost of energy (LCOE) for land-based and offshore wind power plants in the United States. Data and results detailed here are derived from 2020 commissioned plants and ...



**2MW / 5MWh  
Customizable**

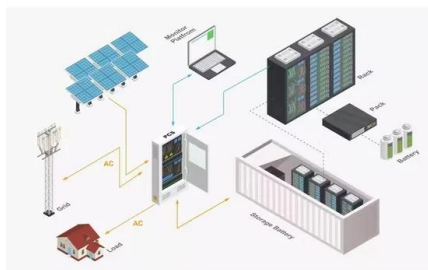
### **Economic analysis of operation and maintenance costs of hydropower plants**

Estimation of O& M costs of a hydropower plant is a complex process, which is difficult to calculate directly based on the installation cost because the old power plants may ...



### **Wind Plant Operations and Maintenance Challenges and Research ...**

O& M costs account for up to 35% of levelized cost of energy for land-based wind plants in the United States<sup>1</sup>. Further O& M cost reductions achievable by improved practices. Global O& M ...



### **High Torque And Low Maintenance Advances In Gearbox**

By identifying and addressing problems before they lead to failure, operators can minimize downtime and maintenance costs, enhancing the overall efficiency and reliability of ...



### Power plant O& M: how does the industry stack up on cost?

Power Plant O& M Costs and Industry Trends. Whether the energy source is fossil fuel-based, nuclear or renewable, the cost of operation and maintenance (O& M) forms ...



### Life Cycle Costs and Carbon Emissions of Onshore Wind Power

complement onshore wind power as a mainstream energy source, including the costs and emissions associated with the installation and operation of conventional generation to cope ...



### Cost and Technology Trends for Onshore Wind Power in Japan

6 2 Onshore wind power technology trends in Japan 2.1 Summary of data The data sample covers 32 power plants with total installed capacity of 646 MW and 266 turbines (Figure 2). ...



### Costs, Performance and Investment Returns for Wind Power

6. Figures 2 & 3 show the empirically observed evolution of capex costs for onshore and offshore wind. In both cases there has been a significant increase in the average capex cost per MW ...





### The Long-Term Costs of Wind Turbines

Increasing evidence suggests that although larger turbines can capture more energy, at a certain point the costs of maintaining and decommissioning large turbines located far offshore will



## Contact Us

---

For catalog requests, pricing, or partnerships, please visit:  
<https://vdbconstruction.co.za>