

# The height of photovoltaic panels





## Overview

---

The standard solar panel height is about 65 by 39 inches, but again, this measurement can be different from one manufacturer to another. What is a typical solar panel size?

Most residential solar panels' standard size range from 65 by 39 inches, or 17.3 square feet, to 78 inches by 39 inches, or 20.5 square feet. Average solar panel size — large or small solar system size — is available to produce different levels of energy output.

How much does a commercial solar panel weigh?

Commercial solar panels tend to be about a foot longer than residential solar panels at 6.5 feet by 3 feet and can weigh 50 pounds or more. The exact size of residential and commercial solar panels depends on the manufacturer and their specifications.

What are the dimensions of a residential solar panel in the UK?

The typical dimensions of a residential solar panel in the UK is 189cm x 100cm x 3.99cm (length, width and height) Solar panel weight is a crucial factor to consider when planning a rooftop solar installation. The weight of the panels, along with the mounting equipment, adds a significant load to your roof structure.

How tall is a solar panel?

The standard solar panel height is about 65 by 39 inches, but again, this measurement can be different from one manufacturer to another. There are two common configurations, namely the 60-solar cell and the 72-solar cell per panel configuration. A 60-cell model is what's used in a 6 by 10 grid, while a 72-cell panel on a 6 by 12 grid.

What is a photovoltaic (PV) solar panel?

This solar panel is a photovoltaic (PV) panel that offers several advantages



over the standard solar panel size, making them a good alternative. Some of the benefits of this solar panel type include: Sleek weight and flexibility – because of its weight, this solar panel is easier to install in different locations.

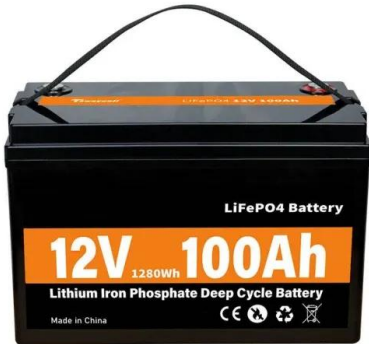
How do I choose the right solar panel size?

The size of a solar panel should be chosen based on factors such as available space, energy needs, and budget. Solar panels can be combined to create larger systems, and the size of the system will depend on the energy needs of the user. Choosing the right size of the solar panel is important for maximizing energy production and cost savings.



## The height of photovoltaic panels

---



### Wind load characteristics of photovoltaic panel arrays mounted ...

Parapet height of 2 h (h is the panel height projected on the vertical plane) If the panel inclination is too large, the solar energy absorbed by the panels might be small. If ...

### Roof-Mounted Solar PV Panels - Part 1: Structural Code

"R324.4.1 Roof live load. Roof structures that provide support for photovoltaic panel systems shall be designed for applicable roof live load..."  
"R907.2 Wind Resistance. Rooftop-mounted ...

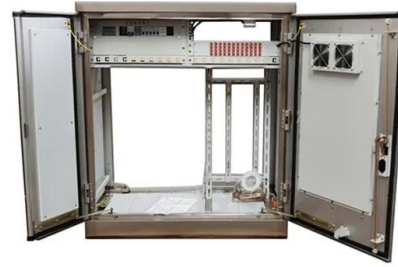


### All About Ground Mounted Solar Panels - Forbes Home

A ground-mounted solar panel is the same as a rooftop solar panel. The only difference is ground-mount solar panels get set up on the ground and use a standard ...

### Solar PV for Flat Roofs Design Considerations

In the UK, solar photovoltaic (PV) is a popular renewable energy and its deployment is rising rapidly across the globe. With recent fluctuations in energy markets and carbon reductions ...

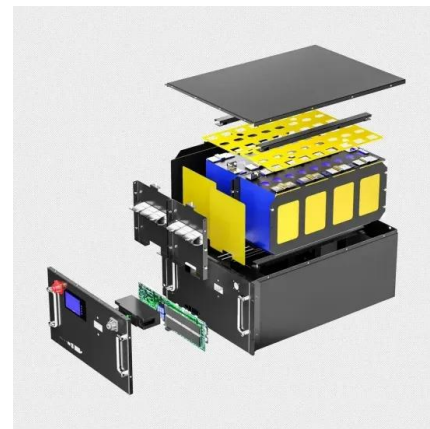


[Complete guide to solar panel size](#)

The average 60-cell solar panel is about 65 inches by 39 inches, or 5.4 feet by 3.25 feet, and weighs around 40 to 50 pounds. The actual dimensions will vary from panel to panel, so we've ...

**Structural Requirements for Solar Panels -- Exactus ...**

Photovoltaic panels must be able to withstand high winds depending on the location and height of the building. Engineers perform wind load calculations following guidelines provided in civil engineering standards.



**Enhancing Heat Transfer of Photovoltaic Panels with Fins**

Photovoltaic power generation can directly convert solar energy into electricity, but most of the solar energy absorbed by the photovoltaic panel is converted into heat, As ...





### High Rise Elevated Solar Structure

Solar energy is the most cost-effective and long-term solution for lowering our electricity bills and carbon footprint among all renewable energy sources. Solar panels are ...

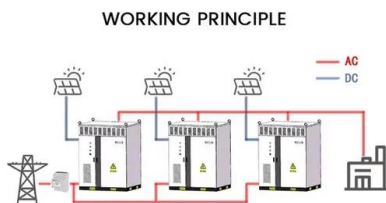


### Evaluating the real-world performance of vertically installed ...

1 Introduction. The rising need for eco-friendly and renewable energy solutions has amplified the focus on photovoltaic (PV) systems. Bifacial PV (BiPV) panels, among these ...

### Standard Solar Panel Sizes And Wattages (100W-500W Dimensions)

That's basically a 66x39 solar panel. But what is the wattage? That is unfortunately not listed at all. 72-cell solar panel size. The dimensions of 72-cell solar panels are as follows: 77 inches ...



### Solar Panel Building Regulations & Planning Permission

Solar panel building regulations. Solar panel installations have to pass standard building regulations for the property - it's a legal requirement for many home improvements.. The key ...



### Solar Panel Sizes, Dimensions & Weight

How solar panel size and dimensions affects the system design. When it comes to designing a optimal solar system the solar panel size plays a key role: The height and width ...



51.2V 150AH, 7.68KWH

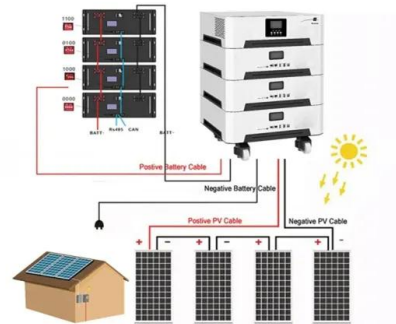


### **Solar Panel Structure's Leg Height Estimation , Solar ...**

Solar photovoltaic panels perform best when the shadow effects are neglected. For this, the mounting structures play a significant role. The solar panel structures provide steadfast support to the panels as well as the BOS of ...

### Solar Panel Sizes & Dimensions UK (2024)

The most common solar panel sizes for residential installations are between 250W and 400W, while larger commercial installations may use panels up to 500W or more. ...



### **Sizing Solar Structure Components in Solar Panel Design**

One of the most important ways to combat climate change and the global energy issue is by promoting the use of solar energy. About 80% of the energy required to ...



### How big are solar panels? Solar panel size and weight

Solar panels generate clean energy and significant savings, but they aren't a one-size-fits-all solution. The size and weight of solar panels vary depending on the make and ...



### Guide to Solar Panel Sizes & Dimensions (November ...

Solar cell dimensions are typically around 189 x 100 x 3.99cm (6.2 x 3.28 x 0.13 feet), while solar panel dimensions are usually between 1.6m<sup>2</sup> to 2m<sup>2</sup> (17.22 to 21.53 square feet). The physical size of the solar panel is ...

### Best Angle For Solar Panels and Optimal Roof Direction

For the optimal value calculation I used the calculator by the European Commission's Photovoltaic Geographical Information System.. For more details, see Source ...

TAX FREE

### ENERGY STORAGE SYSTEM

**Product Model**  
HJ-ESS-215A(100KW/215KWh)  
HJ-ESS-115A(50KW 115KWh)

**Dimensions**  
1600\*1280\*2200mm  
1600\*1200\*2000mm

**Rated Battery Capacity**  
215KWH/115KWH

**Battery Cooling Method**  
Air Cooled/Liquid Cooled




### Determining Module Inter-Row Spacing , Greentech ...

Good write up, Does this equation for determining row width hold good for single axis tracked panel rows which run north south. The panels in each row tilt maximum +55/-55 towards the sun at sunrise and sunset. Applying this height ...



### Solar Panel Sizes And Wattage , Sizing, Dimensions

The size or dimensions of the solar panels, measured in height by width, will determine the number of solar panels that will fit on your roof and the wattage of solar panels installed. And the power produced or wattage ...



### All the different options for fixing PV Panels

An in-roof solar panel system sits on top of the roofs battens and is then tiled or slated around. The thing is you are likely going to be raising the roofline by the height of the panel, this can ...



### Solar Angle Calculator , Solar Panel Angle Calculator

If you want to get the best performance during the summer months, you would angle your photovoltaic panels according to the height of the sun in the sky during these months. If you ...



### Correct Installation of Photovoltaic (PV) System

PV system exceeding the height of 1.5m should be certified by an Authorized Person who is registered under the Buildings Ordinance for submission of a safety certificate ...





### **(PDF) Wind load characteristics of photovoltaic panel ...**

PDF , To quantify design wind load of photovoltaic panel array mounted on flat roof, wind tunnel tests were conducted in this study. Parapet height of 2h (h is the panel height projected on



### **How Big is a Solar Panel? The Solar Panel Size Guide**

A single photovoltaic cell is 6 inches by 6 inches. A solar panel is comprised of these photovoltaic cells arranged in configurations of 32, 36, 48, 60, 70, and 96 cells. How many cells are in a ...

### **Shading effect and energy-saving potential of rooftop photovoltaic ...**

The height of the photovoltaic panel installation is 15 cm, and it faces due south, as shown in Fig. 5. The photovoltaic panel is connected to a resistor to simulate the ...



### [Solar Panel Sizes and Wattage Explained](#)

Solar panel dimensions and power output are important for efficient energy systems. By Olivia Bolt March 18, 2024 6 Mins Read In the last decade alone, PV panel installations have seen a 40% to 45% increase ...



## Solar panel inclination angle, location and orientation

Any implementation of a sustainable photovoltaic solar energy system implies the optimization of the resources to be used. Therefore, it is the basis for the design and assembly of solar installations to optimize renewable ...



## Solar Panel Dimensions and Sizes: Complete Guide

Reducing energy costs and dependencies with solar energy . Standard Solar Panel Size. How big is a solar panel? There are three main sizes of solar panels to know: 60-cell, 72-cell, and 96-cell. For commercial and residential solar ...

## Contact Us

---

For catalog requests, pricing, or partnerships, please visit:  
<https://vdbconstruction.co.za>