

# The photovoltaic panels on the roof are not laid neatly



**TAX FREE**



## Product Model

HJ-ESS-215A(100KW/215KWh)  
HJ-ESS-115A(50KW 115KWh)

## Dimensions

1600\*1280\*2200mm  
1600\*1200\*2000mm

## Rated Battery Capacity

215KWH/115KWH

## Battery Cooling Method

Air Cooled/Liquid Cooled





## Overview

---

Do solar panels work on a flat roof?

The simple answer is yes, they do! Although there are a few disadvantages, solar panels for a flat roof can work as effectively as those on a tilted roof. In some cases, they're even better since you can control the exact direction and pitch. This means you shouldn't let a flat roof stop you from getting solar panels for your home.

Are flat roof solar panels better than tilted solar panels?

**Dirt Accumulation:** Researchers found that flat roof solar panels are more likely to have dirt build up. Dust and droppings from birds can build up and cause severe losses in energy output if not properly maintained and cleaned.  
**Space Issues:** Flat roof solar panels need more space than those on tilted roofs.

Should I replace my flat roof before installing solar panels?

The majority of flat roofs are made of traditional felt, which has a lifespan of approximately 15 years. So if your flat roof is over 10 years old, it would definitely be worth replacing it before installing solar panels. The same applies if you are planning to build an extension on your home and place solar panels on the flat roof.

How long do solar panels last on a flat roof?

Most UK roofs are strong enough to hold solar panels for their entire lifespan – which can last 40 years or more. This is because a solar panel system usually weighs about 20kg per square metre, which the great majority of roofs can hold. However, flat roofs may not always be strong enough for solar panels.

Do stationary flat roof solar panels have a solar tracker?

The one drawback with stationary flat roof solar panels is that they can't turn to face the sun's direction. This is where an automatic solar tracker system



comes into play. A solar tracker will allow the panels to turn to always face the sun and absorb its rays. (all quotes are 100% free! There's no catch!).

Can solar panels be installed on a roof?

Solar panels are a popular choice for homeowners looking to reduce their carbon footprint and save on energy costs. However, installing solar panels on roofs can come with its own challenges and potential problems.



## The photovoltaic panels on the roof are not laid neatly

### [Installing Solar Panels on a Tile Roof](#)



These flat roof varieties are suitable for solar panel installation. These roofs' additional asphalt layers offer strong panel support and guard against leaks and cracks. Solar ...

### The best angle and direction for solar panels [UK, 2024]

6 ???· In the case of most rooftop solar panel installations, the angle is determined by the roof - and fortunately, most roofs in the UK are angled at roughly 30 to 50 degrees. Solar panels should always be installed at around ...

**OEM service**

Hot Colors:

Color can be customized  
more questions just do not hesitate to contact us

LOGO Position: (Screen printing)

### How to install photovoltaic panels on the roof

Flat roof PV systems are generally installed in the form of concrete columns and PV brackets. The investment cost is not high and the economy is better. On a horizontal roof, we can determine ...



### Photovoltaic roof tiles: Design and integration in buildings

Efficiency is the standard metric used to quantify the performance of photovoltaic (PV) cells and panels. However, there is a paramount need to reflect on the optimal use of the ...



12V 10AH



### Solar Panel Orientation: 3 Important Things To Know

This blog post will explore the best orientation for solar panels on a roof, why the UK is suitable for solar panels, and what to consider when installing solar panels on your home.

### Comprehensive Flexible and Lightweight Solar Panel Mounting ...

FLEXIBLE SOLAR PANEL MOUNTING INSTRUCTION GUIDE . if required the bar can protrude past the panel to line up with the roof racks to avoid the need to drill through the ...



### How to Install Solar Panels on a Metal Roof

We have experience in completing all kinds of solar panel installations, including fitting solar panels on slate roofs, integrated systems, and yes, even solar panels on metal ...



## Pros and cons of solar panels guide 2024 , The ...

Alan Duncan, of Solar Panels Network, adds that solar panels need the right amount of space for installation (typically the average household will need 1.4m<sup>2</sup> per solar panel, roughly 22 m<sup>2</sup> for



### [Solar Panels On A Flat Roof](#)

A solar panel system is designed to capture sunlight for energy production, and the orientation of your roof will determine how much sunlight it receives throughout the day. The ideal ...

### [Rooftop Solar Panels vs. Solar Farms](#)

As solar power becomes more common, individuals are finding more ways to take advantage of this renewable source of energy. Two of the most common ways to utilize solar power are ...



### **Can Solar Panels Be Installed on a Slate Roof? Is It Safe?**

How Are Solar Panel Cables Run? Wiring is neatly run underneath the slate tiles whenever possible, avoiding a tangled visible mess on top. Does Adding Solar Increase Fire Risk For Slate Roofs? The fire rating of ...



### Horizontal, flat solar panels vs tilted solar arrays

Solar panels installed horizontally on a roof at the St George Hotel in St George, QLD.. In the past, panel manufacturers would not offer warranties on panels installed at an ...



### 9 Problems With Solar Panels On Roofs And How To Address Them

While solar panels can technically be laid flat on the roof, this isn't ideal if your roof isn't pitched. Flat panels won't have the orientation to capture as much sunlight, so their efficiency is reduced, and as water won't ...

### Tiling the Roof & Fitting Solar PV Panels

The building integrated roof mounting PV (BIPV) panels were installed within a few hours, ready for the tilers to fit the adjoining tiles and crack on with the rest of their work. ...



### How close to the edge of your roof can your solar panels go?

In the past I've written about solar panel clamping zones which determine where, on a solar panel's edge, you can place the clamps that attach the modules to their mounting ...



## How are solar panels installed? , 11 steps explained

A professionally implemented solar panel installation should not damage your roof. The only situation in which a properly accredited and certified installer will damage any ...

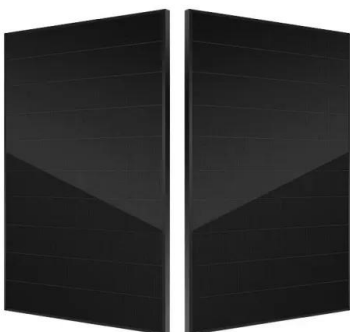


## Do Solar Panels Installed On A Flat Roof Need Tilt Frames?

Flat Roof Solar Panel Spacing Normally solar panel tilt racks are spaced so they won't shade each other in winter when shadows are the longest. But if panels that have panel ...

## [Replacing a lost solar panel on a pop top](#)

Some adhesives do need a primer to adhere to some surfaces as they will stick but just peel off once cured. You would need to check with the manufacturer. I would use ...



## Guide to Installing Solar Panels: Wiring Diagrams

Monitor for shading: Shading on even a small portion of a solar panel can significantly reduce its energy production. Monitor the area around the solar panels for shading, particularly during ...



## Solar Panels on Flat Roofs: What You Need to Know

When it comes to a slanted roof, solar panels can be laid flat against it. But the same cannot be said for flat roofs. That said, the angled mounts required to create an ...



## 16 Common Problems With Installing Solar Panels On ...

In this post, we'll discuss some of the most common problems with installing solar panels on your roof and offer tips for handling them when they come up. We'll also go over what to do before installation to make sure ...

## Solar Panel Orientation: 3 Important Things To Know

By understanding the importance of roof orientation and how it varies depending on your geographic location, you can make an informed decision to maximise the efficiency ...



- ✓ 100KW/174KWh
- ✓ Parallel up-to 3sets
- ✓ IP Grade 54
- ✓ EMS AND BMS

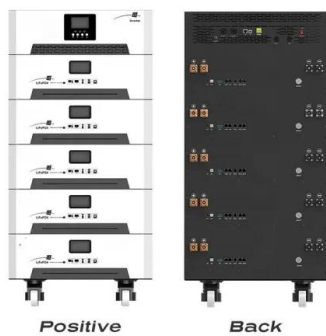
## Is my roof suitable for solar panels? [UK checklist]

If the sun sets in front of you, it's west-facing; if it sets to the left, it's north-facing; and if it sets on the opposite side of the property, it's east-facing. Here's how an installer will decide if your roof is suitable for solar panels, ...



### Can you put solar panels on a flat roof? , The Eco ...

Laid flat, panels are unable to convert as much energy because they will not be getting as much sunlight; Flat roof panels can make some warranties ineffective - When panels are laid flat, water sits between the ...



### The Ultimate Guide to Solar Panels: 45 Commonly Asked

However, the specific installation method will depend on the type of flat roof and the size of the solar panel system. Adams and Day discovered the photovoltaic effect, which ...

### In-Roof vs. On-Roof Solar Panels: Which Is Right for You?

Ultimately, both in-roof and on-roof solar panel systems offer significant benefits and can help you achieve your energy goals. By understanding the pros and cons of each ...



### What Direction and Angle Should Solar Panels Face in India?

Orientation: A south-facing roof is generally considered ideal for maximizing solar energy production. East and west-facing roofs can also be suitable but may have slightly ...

**Efficient Higher Revenue**

- Max. Efficiency 97.2%
- Max. PV Input Voltage 1000V
- 150% Peak Output Power
- 2 MPP Trackers, 150% DC Input Overvoltage
- Max. PV Input Current 15A, Compatible with High Power Modules

**Intelligent Simple O&M**

- IP66 Protection Degree: support outdoor installation
- Smart IR V Curve Diagnosis Function: locate PV string faults accurately and automatically detect faults
- DC & AC Surge SPD: prevent lightning damage
- Battery Reverse Connection Protection

**Flexible Abundant Configuration**

- Plug & Play, UPS Switching Under 10ms
- Compatible with Lead-acid and Lithium Batteries
- Max. Current Inverter Parallel
- AFCI Function (Optional): when an arc fault is detected the inverter immediately stops operation



## The Complete Guide to Flexible Solar Panels , Eco Experts

However, considering that only about 85% of a solar panel's energy capacity is fulfilled, you'd need five 160W panels to meet this 608kWh energy requirement, which would ...



### Are solar panels on a flat roof a good idea? , Homebuilding

While solar panels can technically be laid flat on the roof, this isn't ideal if your roof isn't pitched. Flat panels won't have the orientation to capture as much sunlight, so their ...

## Contact Us

---

For catalog requests, pricing, or partnerships, please visit:  
<https://vdbconstruction.co.za>