

The roof photovoltaic panel has a small inclination angle





Overview

Usually, solar panels of a self-consumption system are located on the roof, although it is not the area closest to the storage system or energy meters. For security and architectural integration reasons, the roof of the buildings is usually determined as the location area for the solar panels. The roof is a structural element of the.

The roof space will determine the available surface in which the property defines to locate the PV panels. It will be necessary to ensure that this surface is an easily accessible space for maintenance operations, while this.

To take maximum advantage of solar radiation, it is advisable to orient the solar panels towards the south if we are in the northern hemisphere and.

The separation between rows of PV panels must guarantee the non-superposition of shadows between the rows of panels during the.

The optimal tilt angle of photovoltaic solar panels is that the surface of the solar panel faces the Sun perpendicularly. However, the angle of incidence of solar radiation varies during the.

The optimum angle for solar panels on flat roofs is around 30 to 35°. This angle helps the panels balance, maximising solar energy production and allowing rain to flow off them easily. What is the optimal tilt angle of photovoltaic solar panels?

The optimal tilt angle of photovoltaic solar panels is that the surface of the solar panel faces the Sun perpendicularly. However, the angle of incidence of solar radiation varies during the day and during different times of the year.

What is solar panel angle?

Solar panel angle is also known as the vertical tilt of your solar panel system. For example, a solar panel array that's perpendicular to the ground has a 90-degree angle tilt. To harness solar power more efficiently, solar panels should be angled to face the sun as closely as possible.

What angle should solar panels be installed on a roof?



Anywhere between 20 and 50 degrees will usually enable your system to produce roughly as much electricity as it could. And in the case of most rooftop solar panel installations, the angle of the solar panels is determined by the angle of the roof – so there isn't much you can do to change it.

What is the ideal inclination of photovoltaic panels?

The ideal inclination of the photovoltaic panels depends on the latitude in which we are, the time of year in which you want to use it, and whether or not you have your own generator set. In winter, the optimum angle is close to 50°, and in summer, the ideal angle is around 15 degrees. However, some conditions can alter this premise.

What is the best angle for solar panels in 2024?

Benefit from the BEST Solar Deals in 2024 and SAVE hundreds per year on your bills! The best angle for solar panels in the UK is between 30° and 40°. To ensure that your solar panels can produce energy optimally, they should be installed on a south-facing part of your roof.

What is the best solar panel angle in the UK?

Solar panel angle refers to the vertical tilt of your solar system on your roof and it varies per geographic location. The best angle for solar panels in the UK is somewhere between 30° and 40°. However, this also varies depending on where in the UK your home is situated, as you can see below:



The roof photovoltaic panel has a small inclination angle



What's the Best Angle for Solar Panels? , EnergySage

The bigger blockers tend to be shading, roof size, local electricity prices, and local solar power policies. Below, we'll get into the finer details of the ideal direction and angle for solar panels, how it varies ...

Effect of orientation and tilt angles of solar collectors on their

A study by Jacobson and Jadhav [27] used the National Renewable Energy Laboratory's PVWatts program to estimate for all countries in the world, the optimal tilt angles ...



[Photovoltaic panels tilt angle optimization](#)

The tilt angle of solar panels is significant for capturing solar radiation that reaches the surface of the panel. Photovoltaic (PV) performance and efficiency are highly ...

Which Is More Important: Solar Panel Orientation or ...

Solar Panel Angle. The angle of your solar panels is an important aspect to consider when designing your system. Solar panel angle is also known as the vertical tilt of your solar panel system. For example, a solar ...



Best Angle for Solar Panels in the UK and Beyond

Compare the performance of solar panel tilt and orientation on roofs in the UK & around the world. Powering Change. Installing since 2010 · 0118 951 4490 · info@spiritenergy .uk. The optimum roof angle of ...



Solar panel angle. How to calculate the angle of solar panel

Source: How does the angle between the sun and the horizon would impact the output of solar panels When it comes to solar panel angle and its calculation, it must be noted that there are ...



What Direction and Angle Should Solar Panels Face in ...

Orientation: A south-facing roof is generally considered ideal for maximizing solar energy production. East and west-facing roofs can also be suitable but may have slightly reduced efficiency. Tilt: A solar panel tilt angle ...





Photovoltaic Efficiency: Solar Angles & Tracking Systems

The energy output of a PV panel changes based on the angle between the panel and the sun. The angle at which the sun hits a PV panel determines its efficiency and is what engineers use ...



Lithium battery parameters

Product capacity: 100Ah

Product size: 135*197*35mm

Product weight: 1.82kg

Product voltage: 3.2V

internal resistance: within 0.5



[Solar Panel Angle By Postcode UK](#)

The best all-year-round angle for PV (photovoltaic) solar panels in the UK is 35-40 degrees. The best angle for each region within the UK will vary slightly within this. For seasonal changes, the best angle for ...

Experimental and numerical study on the aerodynamic

Under an inclination angle of 30°, zone B achieves a maximum wind pressure coefficient of 1.63, and the overall wind pressure coefficient increases by 30.55% compared ...



What is the Best Angle for Solar Panels? Maximizing the Efficiency

Even a relatively small adjustment off the ideal angle can result in substantial losses of solar exposure and output over the 25-30 year expected lifespan of a solar ...





Best Angle & Direction For Solar Panels in the UK , Glow Green

For instance, in London and South East England, the optimal year-round angle is around 35.9 degrees, while in Scotland, it's closer to 37.8 degrees. This tilt allows solar ...



Best Angle & Direction for Solar Panels UK: November ...

The best angle for solar panels in the UK is between 30° and 40°. To ensure that your solar panels can produce energy optimally, they should be installed on a south-facing part of your roof. Solar panel angle and ...

The effect of tilt angle and orientation of solar surface on solar

In this direction, for the day (10 a.m. to 1 p.m.) the maximum power is obtained for the tilt angle of 35° and in the afternoon (1:30 p.m. to 4 p.m.) for solar panel with tilt angle ...



Best Angle And Orientation For Solar Panels - Forbes ...

Since solar panel angles are the vertical tilt of your solar system, various factors ensure you have the optimal angle for your solar panels. Roof Tilt. Of course, everyone's roof is designed



Solar panel efficiency: how much does the orientation ...

Optimal electricity production occurs when the photovoltaic panels face south at an angle of inclination of 35°. However, even if you lower the roof pitch to as much as 5°, production will only drop by about 10 percent.



[Solar Angles and Tracking Systems](#)

A New Angle on Photovoltaic Solar Panel Efficiency - Students explore the effect of changing the angle of a small PV panel on its electrical current output. Using multimeters, students measure ...



How PV panel tilt affects solar plant performance -- RatedPower

The vertical tilt, or angle, at which the solar panels are installed in a photovoltaic (PV) system will have an impact on the amount of electricity they can generate. A panel will ...



(PDF) Optimal tilt angle for solar photovoltaic modules on pitched

On sloped and gable roofs, both the azimuth and tilt angles of the PV panels need to be adapted to the roof slope; generally, the azimuth angle is fixed, while the tilt angle ...



Best Angle for Solar Panels: It's Not Your Latitude

Historically, the advice for finding the best angle for solar panels has been to set your tilt angle equal to your latitude. Using latitude is a good rule of thumb. But we can also get ...

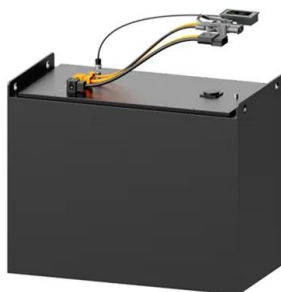


Optimal Tilt Angle Determination for PV Panels Using Real Time ...

It can be seen in Table 10 that the optimal energy obtained is 5221.5 kWh, whereas the energy generated at fixed angle of 40° is 4886 kWh which is approximately 336 ...

What's the Best Angle for Solar Panels? , EnergySage

South-facing solar panel systems almost always generate the most electricity, but east-west roofs can work well for solar, too. Angle is rarely a make-or-break factor, and most roof tilts will work fine--though there are ...



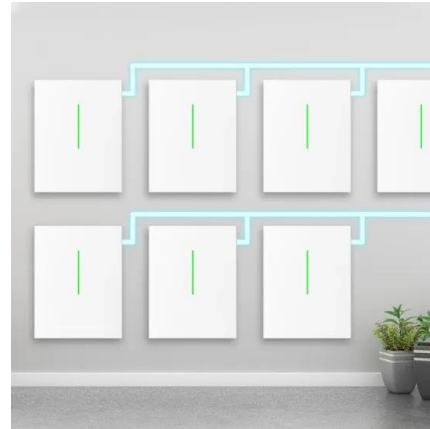
Wind Load and Wind-Induced Vibration of Photovoltaic ...

(1) Background: As environmental issues gain more attention, switching from conventional energy has become a recurring theme. This has led to the widespread ...



(PDF) Wind Loads on a Solar Panel at High Tilt Angles

In this study, the orientation of a single panel is adjusted to different angles of tilt (10°-80°) and angles of incidence for wind (0°-180°) that are pertinent to offshore PV panels.



APPLICATION SCENARIOS

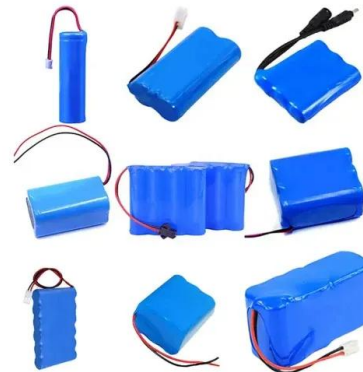


What is the best direction for solar panels to face?

The bottom line: The optimal solar panel angle can increase production, but failure to achieve isn't a dealbreaker. How to calculate output on your roof based on its direction. The easiest way to ...

What is Angle of Inclination?

An angle between the horizontal line and the tilted surface of a solar panel. The optimal angle of inclination for a photovoltaic system varies, depending on the latitude of a location. News. ...



Retractable roof module with photovoltaic panel as small solar ...

The angle of opening from E to W is 160°. Furthermore, proposed adding a PV installation on panel 1. This panel has a constant angle in the east direction of 10° no tracking ...





What is the best angle for positioning solar panels in the UK?

In this guide, we'll walk you through the best angle for solar panels in the UK and why getting the right install angle is essential to maximising your solar PV system, no matter ...



[Solar Panel Orientation Calculator](#)

Your solar panel orientation is an important part of the sizing of photovoltaic and solar thermal systems. Since solar power produced is directly proportional to the orientation of solar panels, the right orientation can not only ...

Calculating Optimal Azimuth Angle for Solar Panels

The solar azimuth angle for solar panels is the angle between the north and the sun with panels on the local horizon. The local horizon is the imaginary horizontal plane on ...



LFP 12V 100Ah

- High energy density and long cycle life
- Modular structure

No need to replace the battery

Shorter charging time

Meets #1 EV car

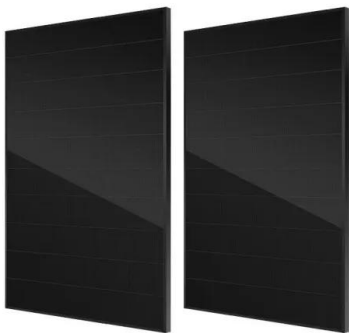
What's the best angle and direction for solar panels?

The optimal angle for solar panels in the UK is between 20° and 50° UK-based solar panels generate most energy when facing south; Solar panel orientation depends on where in the world you're located; Solar panels can ...



Determining the Optimal Inclination and Orientation Angles of ...

inclination angle of the panel. By using two steps of ANN, this paper proposes a method to determine the optimal combination of inclination and orientation angles for PV panels installed ...



Optimal Inclination Angles of Photovoltaic Panels for Maximum Power

To examine the effect of inclination angle on the output power of the PV panel, three PV panels have been installed at 300, 400 & 450 angle of inclination. The values of the ...

Contact Us

For catalog requests, pricing, or partnerships, please visit:
<https://vdbconstruction.co.za>