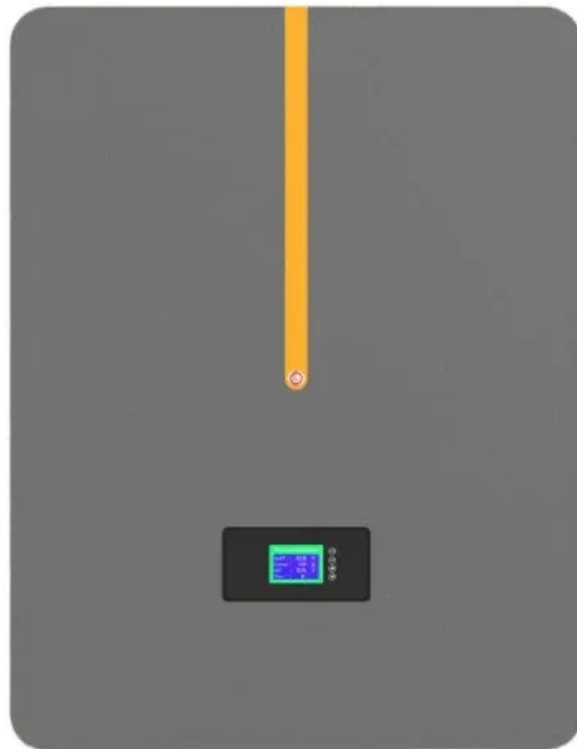


Vegetable base installed with photovoltaic panels





Overview

How to design a photovoltaic panel for agriculture?

The design must consider crop type, spacing, height, PV panel orientation, and spacing [23, 73]. Coverage rate of PV panels: Huang et al. discuss the difficulties of determining photovoltaic panel coverage for agriculture . Different regions have different crops and environments, and solar panel material affects transparency.

How to choose a solar panel agrivoltaic system?

It is critical to choose shade-tolerant crops as solar panels shade the crops. Leafy greens, herbs, and some vegetables are best. Ground-mounted agrivoltaic systems' solar panel foundations can suffer from excessive soil moisture. Succulents and other crops with low water requirements can be chosen to avoid stability problems .

Which crops can be grown under PV panels?

Tomato, lettuce, pepper, cucumbers and strawberries are the most studied crops under PV panels (Fig. 5). The recent literatures for applications of selective shading systems on the aforementioned crops and others plants are reviewed in the following sections.

Are vertically placed solar panels suitable for shade-intolerant crops?

Vertically placed Bifacial PV, transparent, and semitransparent tilted PVs can be suitable for shade-intolerant crops whereas opaque PVs are appropriate for shade-tolerant crops. The knowledge gap between various stakeholders such as solar PV researchers, agricultural researchers, and land users needs to be more rigorous.

How do I choose a ground-mounted agrivoltaic system?

Ground-mounted agrivoltaic systems' solar panel foundations can suffer from excessive soil moisture. Succulents and other crops with low water



requirements can be chosen to avoid stability problems . Consider crop height to avoid interfering with solar panel operation or blocking sunlight from other crops in ground-mounted AVS.

Do agrivoltaic solar panels produce more fruit?

Ultimately, total fruit production was twice as great under the PV panels of the agrivoltaic system than in the traditional growing environment. Fig. 3: Plant ecophysiological impacts of colocation of agriculture and solar PV panels versus traditional installations.



Vegetable base installed with photovoltaic panels

A Complete Guide on Solar Panel Calculations (2023 Update)

If you reside in an area that receives 5 hours of maximum sunlight and your solar panel has a rating of 200 watts, the output of your solar panel can be calculated as ...



Shading Effect of Photovoltaic Panels on Growth of Selected ...

The PV greenhouse (PVG) can be classified on the basis of the PV cover ratio (PVR), that is the ratio of the projected area of PV panels to the ground and the total ...



[DIY Solar Panel Installation Guide](#)

DIY Solar Panel Installation is a great way to produce renewable energy and lower your energy bills. Read our guide on how to install solar panels yourself. Skip to content. 8.00am - 4.00pm; ...



An overview of solar photovoltaic panels' end-of-life material

Global installed PV reached around 400 GW at the end of 2017 and is expected to rise further to 4500 GW by 2050. The review also anticipates the base of solar panel ...



Are solar panels worth it?

Solar panel installation cost A smaller upfront cost could mean that it's quicker to break even, though a set-up with a smaller installation will probably generate less electricity. ...



Evaluating the real-world performance of vertically installed ...

The results underscore the feasibility and advantages of employing vertically installed bifacial photovoltaic panels in residential settings, particularly in limited areas. ...



A comprehensive review on the recycling technology of silicon ...

PV technology is expected to play a crucial role in shifting the economy from fossil fuels to a renewable energy model (T. Kåberger, 2018).Among PV panel types, ...





Solar Panel Wiring Basics: Complete Guide & Tips to Wire a PV ...

You should know that there are limitations for series solar panel wiring. In the U.S., solar strings are required to feature a maximum voltage of 600V, so solar arrays comply ...



Shading Effect of Photovoltaic Panels on Growth of Selected ...

In this study, we installed an agrivoltaic system and evaluated the effects on the growth and development of crops due to the shade generated by the solar panel structure. Our ...

59 Solar PV Power Calculations With Examples Provided

46. Solar Panel Life Span Calculation. The lifespan of a solar panel can be calculated based on the degradation rate: $L_s = 1 / D$. Where: L_s = Lifespan of the solar panel (years) D = Degradation rate per year; If your solar panel has a ...

- Lifepo4
- Wide temp: -20°C to 55°C
- Easy to expand
- Floor mount&wall mount
- Intelligent BMS
- Cycle Life:≥6000
- Warranty :10 years



Agrioltaics: The Future of Agriculture with Solar

These solar panels, typically mounted on 1-3 feet high support structures, are installed in long arrays, between or above crops. They have the advantage of relatively low installation costs, but the disadvantage is that the ...



How much do Solar Panel Systems Cost? UK Prices 2024

Case Study: solar panel installation for an average UK home o House type: Semi-detached o Solar panels: polycrystalline 4kW o Number of panels: 10-14 o Solar panel ...



The best angle and direction for solar panels [UK, 2024]

6 ???· In the case of most rooftop solar panel installations, the angle is determined by the roof - and fortunately, most roofs in the UK are angled at roughly 30 to 50 degrees. Homeowners with flat roofs used to need ...

How are solar panels installed? , 11 steps explained

In this guide, we'll explain a typical solar panel installation from start to finish, as well as what all the hardware does, and where on your property you can install the panels. If you're interested in how much you could save ...



Solar Panels for Greenhouse: Everything You Need to ...

1. Install the solar panels on your greenhouse roof, ensuring they are in a sunny location and positioned at an angle to optimize sun exposure.
2. Connect the solar panel wires to the solar controller.
3. Attach the storage ...



Comprehensive Guide for Solar Panel Mounting Hardware

3. Types of Solar Panel Mounts. Different types of solar panel mounts cater to various installation requirements and environmental conditions. If you understand the different ...

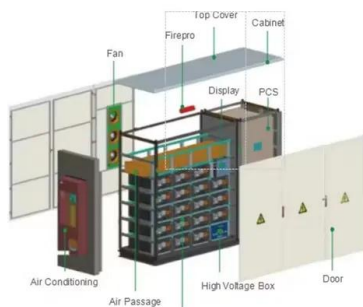


[How to Install Solar Panels on Roof](#)

The first step in the solar panel installation guide is to install the mounts that will support the solar panels. These come in three primary types: pole, roof-ground, and flush ...

The Complete Guide to Solar-Powered Greenhouses

Solar panels are commonly used as a solar energy source for greenhouses, especially among sustainably-minded people. Made of photovoltaic cells, solar panels and systems can be installed to convert sunlight into usable ...



[Photovoltaic panels tilt angle optimization](#)

In this paper the values of optimal tilt angle over each month for a PV panel installed in Kerala, India (9.55°N, 76.81°E) was theoretically estimated using geographic factor method, clearness



The complete guide to ground-mounted solar panels

As previously mentioned, they are also one of the best ways to install bifacial solar panel systems. These panels generate solar energy from both sides and are typically ...



Installing a Photovoltaic System in Cyprus: Complete ...

Comparison of Panel Types. When choosing a photovoltaic panel, it is essential to consider the efficiency, cost, and available space for installation. Monocrystalline panels are the most efficient but also the most expensive. ...



[Solar Panels for Farms and Agriculture](#)

Geo Green Power are specialists in large-scale solar panel systems for farms and agriculture. Interest in investing in solar technology has risen sharply due to the significant financial returns ...



Commercial and Industrial ESS

Air Cooling / Liquid Cooling

- Budget Friendly Solution
- Renewable Energy Integration
- Modular Design for Flexible Expansion



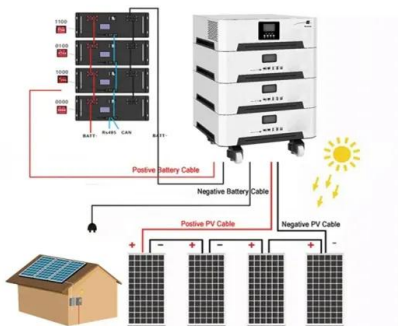
Comprehensive review on agrivoltaics with technical, ...

Fig. 1 explains the classification of AVS on the basis of the mounting of the PV panels. The two main types of AVS are fixed type AVS and dynamic type AVS. Fixed type ...



Solar Panel Orientation: Landscape vs Portrait , Fenice Energy

Landscape vs Portrait Orientation for Solar Panels. Introduction: There is much more before the decision of going solar it is not just the green energy authorities, but another ...



Effect of shading determined by photovoltaic panels installed ...

The photovoltaic panels can be placed some meters above the canopy in order to allow the cultivation of different crops and recent data report that up to 60-70% of crop ...

Designing plant-transparent agrivoltaics , Scientific Reports

One way to overcome the severe limitation of opaque agrivoltaics is to design new PVs that can maintain plant yield and quality by minimizing PV impact on transmission of ...



Shading effect on the performance of a photovoltaic panel

The SPVS installed included PV and grid to power separate loads, and PV and grid to power same loads. by covering each row and column in an array of a solar panel. ...



The Impact of Semi-Transparent Solar Panels on Tomato and ...

The experimental design was a completely randomized design (CRD). Nine plants per line were placed. Under the solar panel conditions, two lines contained tomatoes ...



Contact Us

For catalog requests, pricing, or partnerships, please visit:
<https://vdbconstruction.co.za>