

Voltage of 20 photovoltaic panels in series



All In One

Integrating battery packs



Intelligent Integration

integrated photovoltaic storage cabinet



High-capacity

50-500kWh



Rated AC Power

50-100kW



Degree of Protection

IP54



Altitude

3000m(>3000m derating)



Operating Temperature Range

-20~60°C(Derating above 50 °C)



Overview

Here's how to calculate the power output of your solar array, regardless of how you're wiring your panels together -- and regardless of whether or.

Here's a quick overview of how to wire solar panels in series and parallel. For more in-depth instructions, check out our full tutorial. [Full tutorial: How to Wire Solar Panels in Series & Parallel](#)



Voltage of 20 photovoltaic panels in series



Connecting Solar Panels in Series Vs Parallel

Connecting PV panels in series increases the voltage but amps remain the same, but in parallel connection, current and power output increase. For connecting panels in either series or parallel, we need to start with wiring. ...

Series Connected Solar Panels For Increased Voltage

Using the same three 12 volt, 5.0 ampere pv panels as shown above, we can see that when they are clearly connected together in a series string, the combined string produces a total of 36 volts (12 + 12 + 12) at 5.0 amps, giving total ...



How to Wire Two or More Solar Panels in Series

By connecting multiple solar panels in series, we increase the system voltage. In a solar power system, the higher the voltage and the lower the energy losses along the cables. To know the ...

How to wire solar panels , Essentra Components UK

From solar panel wiring basics to more complex photovoltaic wiring diagrams: a solar panel wiring guide to series and parallel. Battery storage systems should be within 20 ...



Understanding PV Wiring in Series, Parallel and Polystring

Solar stringing 101. When wiring module strings together, which happens in series (e.g. positive to negative), voltage is increasing while current stays constant.

Calculation & Design of Solar Photovoltaic Modules & Array

The number of series-connected cells = PV module voltage / Voltage at the operating condition. Number of series connected cells = 15 V / 0.72 V = 20.83 or about 21 cells Thus, we need 21 ...



Shading Solar Panels Series or Parallel , Clever Solar Power

If you have no problems with shade, you can wire your panels in series. Wiring panels in series is cheaper and is better for your MPPT charge controller. Most MPPT charge ...



How Series Vs Parallel Wired Solar Panels Affects ...

Solar Array Volts & Amps Wiring Diagrams: This diagram shows two, 5 amp, 20 volt panels wired in series. Since series wired solar panels get their voltages added while their amps stay the same, we add 20V + 20V to show the total ...

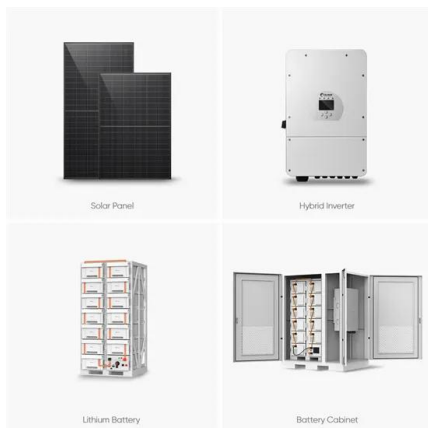


Solar Panel Ratings Explained - Wattage, Current, Voltage, and

For instance, the 100-watt solar panel from our example has a Vmp rating of 17.8 Volts, which means that under the STCs, this solar panel will measure 17.8 Volts across ...

[Sailing with solar power: A practical guide](#)

It's worth noting that, like batteries, wiring PV panels in series increases the voltage only - the current capacity of the array remains the same as for a single panel.



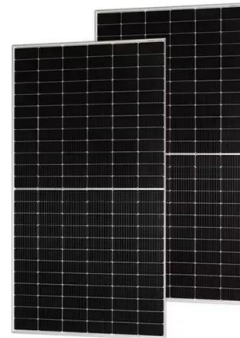
Solar Panel Series vs Parallel: What's The Difference

Understanding these distinctions is crucial for optimizing solar panel performance and designing an effective solar installation tailored to specific needs. Wiring Solar Panels in ...



Connecting Solar Panels in Series or in Parallel?

Series wiring increases the sum output voltage of a solar panel array but keeps amperage the same. If you have 20 solar panels with a rated voltage of 6V each, the ...



Understanding the series and parallel connection of solar panels

In such a scenario, the total voltage of the series connection would be 96 V, while the amperage would remain at 4 A. Solar panels connected in series are ideal in ...

Series vs. Parallel

For this connection, a string is created by 2 or more panels in series. Then, an equal string needs to be created and paralleled. 4 panels in series needs to be parallel with another 4 panels in series or there will be some serious power ...



How to Wire Solar Panels in Series-Parallel ...

The following solar panel and battery wiring diagram shows how to wire a four 12V Solar Panels in series-parallel connection to a 24V, 400Ah battery with an automatic inverter system. Note that the number of solar panels and batteries ...



The Complete Guide to Solar Panel Wiring Diagrams

(Source: Electrical Technology) By combining parallel and series connections in a hybrid wiring configuration, you can address issues like shade and high voltage to maximize ...



Connecting Solar Panels in Series or in Parallel?

If you have 20 solar panels with a rated voltage of 6V each, the maximum potential output during peak sun hours is 120V. However, if just one module is in the shade (or damaged) and only produces 4V, the array's output ...

Connecting Solar Panels in Series or in Parallel?

Series wiring increases the sum output voltage of a solar panel array but keeps amperage the same; If you have 20 solar panels with a rated voltage of 6V each, the ...



Wiring Solar Panels in Series vs Parallel: Which Is Better?

When installing solar panels in series, the voltage adds up, but the current stays the same for all of the elements. For example, if you installed 5 solar panels in series - with each solar panel rated at 12 volts and 5 amps - ...



What Is Maximum System Voltage in Solar Panel? (Help Guide)

We get it - solar system terminology can be confusing. Most residential solar installations are a 12 v solar system. And you may know that in a 12v vs 24v solar system, their ...



Solar String Expansion. Panels Connection Parallel vs Series

String 1. Panels Connection
Type Series Parallel
Number of Panels Voc (V) Isc (A)
Remove String Add String. Connecting Solar Panels in Strings. Connecting multiple solar ...



Should You Wire Your Solar Panels In Series Or Parallel?

With series wiring, the voltage of the panels adds together while the amperage (current) stays the same. Example: If you have four 100W solar panels wired in series and ...



How to Connect Solar Panels in Series: A Simple Guide

The inverter changes the solar panel's DC into usable AC. Make sure to check its max input voltage, start voltage, max input current, and MPPT numbers when choosing. ...



How To Size Your String? How Many Panels In A String

Solar panel wiring is also termed stringing. The technique of how to string solar panels together is a major concern for any solar installer. while the number of series refers ...

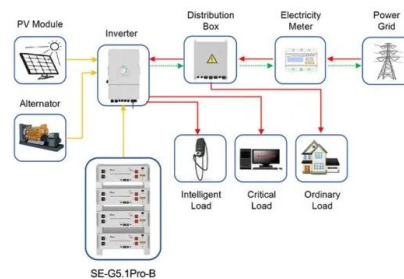


The Difference Between Wiring Solar Panels in Series or Parallel

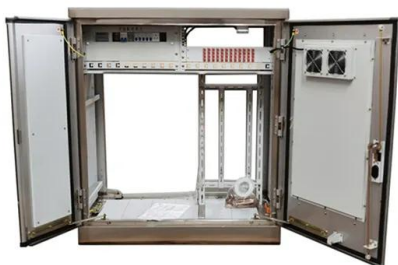
Series Solar Panel Wiring Voltage and Amps in Series. To wire solar panels in series, connect the positive terminal on the first panel to the negative terminal on the next, and ...

Calculating Max PV Voltage is Not Scary

What is the formula to calculate string fuse size in in a system with 4 panels in series (4 x Strings) connected to a PV string group combiner prair to Inverter, Panels used ...



Application scenarios of energy storage battery products



Connecting Solar Panels in Series or in Parallel?

Series wiring increases the sum output voltage of a solar panel array but keeps amperage the same. If you have 20 solar panels with a rated voltage of 6V each, the maximum potential output during peak sun hours is ...



Wiring Solar Panels in Series vs Parallel: Which Is Better?

When installing solar panels in series, the voltage adds up, but the current stays the same for all of the elements. For example, if you installed 5 solar panels in series - with ...



Connecting Solar Panels in Series or in Parallel: Which Is

Series wiring increases the sum output voltage of a solar panel array but keeps the amperage the same; In series-wired solar panel arrays, the overall output voltage ...

Contact Us

For catalog requests, pricing, or partnerships, please visit:
<https://vdbconstruction.co.za>