

Voltage of combiner box in photovoltaic power station





Overview

How do I choose a photovoltaic (PV) combiner box?

When selecting a photovoltaic (PV) combiner box, several key parameters must be considered to ensure the efficient operation and safety stability of the PV power station.

Why should you choose a PV combiner box?

Leading Manufacturer Protects Solar Power Safety. The selection of a PV combiner box is a critical link to ensuring the efficient and safe operation of a PV power station. It involves considering multiple parameters and factors, including input power parameters, input voltage parameters, protection level, temperature range, and reliability.

What is the input power parameter of a PV combiner box?

The input power parameter is one of the key considerations in the selection process. It refers to the maximum input power that the PV combiner box can handle. When selecting, it's necessary to determine the input power parameter of the PV combiner box based on the total installed capacity and expected power generation of the PV power station.

What is a combiner box in a photovoltaic system?

In a photovoltaic system, a combiner box acts as a central hub that consolidates and manages the direct current (DC) output of multiple solar panels. Its main purpose is to simplify the wiring structure, enhance system security and simplify maintenance procedures.

How many DC cables should a PV string combiner box have?

The formula resulted in a recommendation of two parallel, 2×300 mm² aluminum DC cables from the PV string combiner box to the inverter. The cable length was also reviewed to ensure that the voltage drop of the DC cable, and total cable losses, met project-specified requirements.



How to choose a solar combiner box?

Typically includes DC voltage/current as well as switch status/temperature/humidity etc. Protection level is an important index in selecting a PV combiner box. This parameter evaluates the protective performance of the solar combiner box, including dustproof, waterproof and anti-corrosion aspects.



Voltage of combiner box in photovoltaic power station



PV Combiner Box, Solar Combiner Box , Power Home

10 in 1 out PV combiner box, with maximum output voltage 1000VDC, maximum output current 160A, single PV array fuses 16A. Multiple PV array inputs, single input array max. current 16A, ...

Single Line Diagram (SLD) of Solar Power Plant

Example SLD of a Solar Power Plant. Here is a simple SLD illustration of a solar power plant: For an ideal solar panel SLD: - At the beginning, there is a representation of the solar panels (PV modules). - DC ...



Outdoor Cabinet BESS
50 kWh/500 kWh Battery Storage System
Industrial and Commercial Energy Storage

- All In One**
Integrating battery packs
- High-capacity**
50-500kWh
- Degree of Protection**
IP54
- Operating Temperature Range**
-20~60°C.(Derating above 50 °C)
- Intelligent Integration**
Integrated photovoltaic storage cabinet
- Rated AC Power**
50-100kW
- Altitude**
3000m(>3000m derating)

What is a PV Combiner Box Used for? , Power Home

PV combiner box has a wide range of applications in solar power generation system, its main application scenarios include: PV Power Stations: In large-scale PV power stations, PV combiner boxes are used to ...

String combiner boxes for photovoltaic systems

String combiner boxes for photovoltaic systems. It is necessary to use string combiner boxes to provide ideal protection for PV systems against lightning strikes and overvoltages. Our turnkey

...



- 50KW/100KWH
- HIGHER POWER OUTPUT IN OFF-GRID MODE
- CONVENIENT OPERATION & MAINTENANCE
- PRE-WIRED



The solar PV system troubleshooting checklist

Measure voltage on the solar array at the combiner box, load switches, fuses and breakers to see if the proper voltage is present at the load's connections. Check the fuses and ...

A Guide to Large Photovoltaic Powerplant Design

Grid connection for commercial solar power plants is often 11 kV or higher, so it's usually necessary to step up the voltage using one or more transformers. The type of transformer should be selected based on the ...



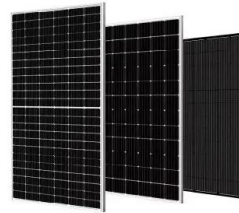
Solar combiner box: definition, core functions and working principle

Types of Combiner Boxes. Standard Combiner Box: A basic type used to combine output currents and send them directly to the inverter.; PV Combiner Box: Used in ...



Ultimate Guide to Choosing Photovoltaic DC Combiner Box ...

When diving into the world of solar energy, the photovoltaic DC combiner box stands out as a pivotal component. Acting as the heart of the photovoltaic array, it's the power ...



[Solar String Combiner Boxes](#)

Factory-assembled combiner box solutions for all residential, commercial and utility-scale applications with single string, or up to 32 strings in 1000V and 1500VDC; monitoring optional Solar string combiners are built with Gemini ...

Photovoltaic AC combiner box detailed explanation

For a huge photovoltaic power station, the amount of the combiner box only accounts for 1%, but 100% of the current passes through it. During commissioning, operation and maintenance, ...



HYSOLIS, Complete 6KW Off-Grid Solar Power Station 120V

INQUIRE FOR YOUR EXACT TECHNICAL SPECIFICATION
Tons of Outputs for All the Flexibility You Need
Continuous Output 240V-6KW or 2x120V-3KW (60Hz) Battery Voltage ...



What Is a Combiner Box as Used in PV Systems?

The Photovoltaic Combiner Box (PV Combiner Box) is usually also called DC Combiner Box. In a photovoltaic system, the PV Combiner Box is an electrical device used to ...



[How to Evaluate A Solar Combiner Box](#)

It is typically used in the larger commercial and utility scale PV power plants (greater than 500kW). The combiner box commonly houses the input overcurrent protection fuse assemblies for several strings (from as few ...

String combiner for solar power , Phoenix Contact

String combiner boxes (SCBs) from Phoenix Contact meet these requirements in a space-saving housing. You can measure DC voltages up to 1500 V with the voltage measuring module. ...



PV and the cable guide - pv magazine International

The PV array comprises: Bifacial modules, generating 540 W with maximum power usage; a rated voltage of 41.3 V, a maximum power point current of 13.13 A, a short ...





[Solar Combiner Box: A Beginner's Guide](#)

The BLA or Big Lead Assembly harness, a thick gauge of wire, can handle the arcing voltage current without a combiner. A solar combiner box is unnecessary for projects ...



The Ultimate Guide to Solar Combiner Boxes: From Basics to ...

4?Voltage Rating. Choose a combiner box with a voltage rating that matches or exceeds the maximum voltage of your solar power system. This is critical for ensuring safe ...



Comprehensive Guide to PV Combiner Box Installation ...

Excessive string voltage due to connecting too many PV panels, raising the combiner box voltage above the system's rated voltage, can degrade internal component performance over time, leading to component breakdown ...



[What is DC PV Solar Combiner Box](#)

A solar combiner box refers to a user being able to connect a certain number of identical specification photovoltaic cells in series, forming individual photovoltaic strings, then connecting several such strings in parallel ...





Solar farm: siting, design and land footprint analysis

The design of a solar power plant with multiple inverters (say 5 MW SPV plant) is slightly different from those with a single inverter (say 100 kWp SPV plant). None of the ...



[What is a PV Combiner Box?](#)

Despite its unfamiliar name, the photovoltaic combiner box plays a vital role in the photovoltaic power generation system. A PV combiner box can also be called a solar combiner box, and as the name suggests, it is a ...

How does the Single Line Diagram (SLD) of a Solar Plant work?

Example SLD of a Solar Power Plant. Here is a simple SLD illustration of a solar power plant: For an ideal solar panel SLD: - At the beginning, there is a representation of the ...



A Comprehensive Guide to Combiner Boxes in ...

Combiner boxes play an important role in photovoltaic (PV) installations. This comprehensive guide aims to shed light on the importance, functions, types and best practices of combiner boxes, unlocking the mystery behind their role in ...



Common Cables and Materials in Photovoltaic Power ...

The selection of a PV combiner box is a critical link to ensuring the efficient and safe operation of a PV power station. It involves considering multiple parameters and factors, including input power parameters, input ...



Solar Combiner Box - energybox

Photovoltaic Power Station System. The combiner box is designed based on high performance and efficiency; it is the supporting components of our PV inverter for the PV power generating. ...



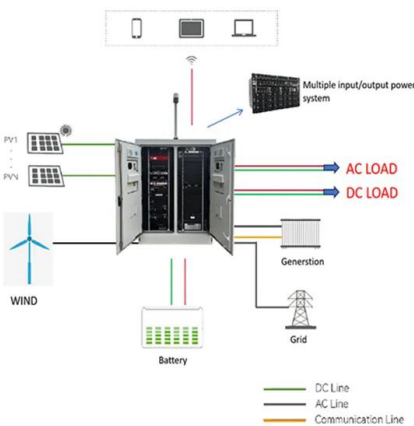
What You Should Know about PV Combiner Box

You should use a combiner box in your solar power system when you have more than three strings of solar panels. It is essential for enhancing the protection of your inverter and providing a rapid shutdown ...



What You Should Know about PV Combiner Box

Photovoltaic combiner boxes play a crucial role in solar panel systems, especially in larger installations. They serve as a centralized point where wirings from multiple ...





Introduction to Photovoltaic System , SpringerLink

The photovoltaic (PV) power generation system is mainly composed of large-area PV panels, direct current (DC) combiner boxes, DC distribution grid connected transformers, and ...



The Comprehensive Guide to Selecting Solar Combiner Box

Combiners offer several features that can increase the efficiency of a solar power setup. These include surge protection, reverse current prevention, voltage overload ...

Contact Us

For catalog requests, pricing, or partnerships, please visit:
<https://vdbconstruction.co.za>