

What does photovoltaic panel downgrade c mean





Overview

Solar panels receive their ratings under specific testing conditions known as "Standard Testing Conditions" or "STCs". These conditions serve as the industry standard for evaluating solar panels, making it easier to compare panels accurately.

The Wattage rating of a solar panel is the most fundamental rating, representing the maximum power output of the solar panel under ideal conditions. You'll often see it referred to as "Rated".

Solar panels come with two Current (or Amperage) ratings that are measured in Amps: 1. The Maximum Power Current, or I_{mp} for short. 2. And the Short Circuit Current, or I_{sc} for short. The Maximum Power Current rating (I_{mp}).

Solar panels are classified by their nominal voltages (e.g., 12 Volts or 24 Volts), but these voltages are only used as a reference for designing solar systems. For example, the following.

What does a Grade C solar panel mean?

Grade C should be quite obvious and would also mean the power of your panel is below the rating. J.T. What would be the typical price difference between a Grade A and a Grade B solar cell?

The price difference between Grade A and Grade B solar cells can easily be USD 0.05 - 0.10/W.

What is solar panel degradation?

Solar panel degradation comprises a series of mechanisms through which a PV module degrades and reduces its efficiency year after year. Aging is the main factor affecting solar panel degradation, this can cause corrosion, and delamination, also affecting the properties of PV materials.

Can a solar cell be graded as C?

A solar cell can be graded as C when the partly broken cell which could be cut into smaller pieces and re-used. Here are a number of Grade C solar cell



examples: 4. Grade D solar cells A Grade D solar cell is broken and can not be cut in smaller cells. There's not much you can do with these.

What does a solar panel rating mean?

Now, let's explore the meaning of each solar panel rating. The Wattage rating of a solar panel is the most fundamental rating, representing the maximum power output of the solar panel under ideal conditions. You'll often see it referred to as "Rated Power", "Maximum Power", or "Pmax", and it's measured in watts or kilowatts peak (kWp).

How often does solar panel degradation occur?

While PV technology has been present since the 1970s, solar panel degradation has been studied mainly in the last 25 years. Research Institutes like NREL have estimated that appropriate degradation rates of solar panels can be set at 0.5% per year with current technology. What is the impact of solar panel degradation on your PV system?

.

What is a Grade B solar cell?

Any deviation is often graded as B, however a correct classification is complicated because there are dozens of different solar cell defects that can occur. This post is a first attempt to design a classification (A, B, C, D) of solar cells, and is a summary of a more in-depth report. 1. Grade A solar cells



What does photovoltaic panel downgrade c mean



[What Determines Solar Panel Efficiency?](#)

This does not mean that polycrystalline solar panels have a lower quality. They have a lower conversion efficiency due to their material properties, but there are high-quality solar modules of both types. A 400W solar panel ...

Solar explained Photovoltaics and electricity

Photovoltaic cells convert sunlight into electricity. A photovoltaic (PV) cell, commonly called a solar cell, is a nonmechanical device that converts sunlight directly into ...



How To Read A Solar Panel Specification (for ...

Think about that for a second. The panel temperature is the temperature that the actual solar panel itself will get to when it is on your roof. This temperature is critical because all solar panels lose efficiency as they ...

Calculate Solar Panel kWp & KWh (KWh Vs. kWp + Meanings)

Put simply, kWp is the peak power capability of a solar panel or solar system. The manufacturer gives all solar panels a kWp rating, which indicates the amount of energy a ...



4kW solar panel systems , Costs & output [UK, 2024]

A 4kW solar panel system costs around £9,500 to buy and install. If you want to include a battery in the installation, this will add around £2,000 to the price, for an overall ...



Understand solar panel specification sheets and how to ...

A solar panel spec sheet provides valuable information about the operating parameters of a panel and can help designers, engineers, and installers determine how to configure a solar PV system. The panel spec sheet will tell ...

Lithium battery parameters

Product capacity: 100Ah

Product size: 135*197*35mm

Product weight: 1.82kg

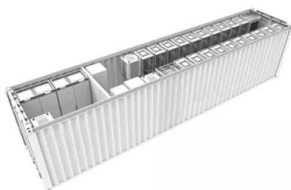
Product voltage: 3.2V

internal resistance: within 0.5



TAX FREE

1-3MWh BESS



Understanding Solar System Ratings

Solar photovoltaic (PV) panels are classified (or rated) by the power they produce under specific conditions. The most common ratings used in the industry are peak/STC, PTC, CEC-AC, and AC.



Solar 101 + Electricity Essentials: Exploring Solar

Solar photovoltaic (PV) panels are classified (or rated) by the power they produce under specific conditions. The most common ratings used in the industry are ...



STC and NOCT - Solar Panel Test Conditions Explained

Not the ambient air temperature. Solar panel cells heat up when exposed to sunlight and cell temperature may be 20-30 degrees higher than ambient. While STC ratings are useful to ...

PV Cells 101: A Primer on the Solar Photovoltaic Cell

How Does Solar Work? Photovoltaic Technology Basics; PV Cells 101: A Primer on the Solar Photovoltaic Cell This material is called a semiconductor; the "semi" means its electrical conductivity is less than that of ...



Effect of Temperature on Solar Panel Efficiency ...

4 ???· At 25°C, solar photovoltaic cells can absorb sunlight efficiently and achieve their peak rated output. However, real-life conditions are far more dynamic anyway. The solar panel output fluctuates in real life conditions. It is ...



Everything you need to know about photovoltaic systems

What does photovoltaic mean? Photovoltaic, derived from the Greek words for light and energy, phos and volt, Solar panel efficiency varies depending on the type of solar ...



How do solar panels work? Solar power explained

A typical solar module includes a few essential parts: Solar cells: We've talked about these a lot already, but solar cells absorb sunlight. When it comes to silicon solar cells, ...

[Explainer: what is photovoltaic solar energy?](#)

There are two main types of solar energy technology: photovoltaics (PV) and solar thermal. Solar PV is the rooftop solar you see on homes and businesses - it produces electricity from solar energy



Photovoltaic Cells

There are two main types of solar panel - one is the solar thermal panel which heats a moving fluid directly, and the other is the photovoltaic panel which generates electricity. They both use ...



Solar Panel Ratings: What You Need to Know

According to Solar Energy UK, solar panel performance falls by 0.34 percentage points for every degree that the temperature rises above 25°C. Plus, the longer days and clearer skies mean solar power generates much ...



Differences Between the kW & kWh of Your Home ...

With one of our experts, you can discover the optimal number of solar panels suited to your home's annual electricity usage, gauge your potential energy production, and understand the significance of a solar panel's power ...

STC, PTC, NOCT: What do they mean and how to use them?

STC is used by solar panel manufacturers to test and rate their panels. The value that interests us is the maximum power (P max) or rated power (P r), which is the nominal power of a solar ...



What does the 'PV' in solar panels stand for? what does 'photovoltaic ...

PV energy is generated by solar cells within the panels which act as semi-conductors generating electricity from solar radiation. Solar cells are wired together to form a module - better known ...





Solar panel output: How much electricity do they ...

'Output' simply means how much electricity a solar panel produces, whether that's measured per hour, per day, or per year. Factors such as the weather (whether it's cloudy or sunny), daylight hours, and the angle of ...



Solar Panel Degradation: What Is It and Why Should ...

What is solar panel degradation? Solar panel degradation comprises a series of mechanisms through which a PV module degrades and reduces its efficiency year after year. Aging is the main factor affecting solar ...

[Solar Panel Wattage & Output Explained](#)

Solar panel efficiency is a measure of total energy converted into electrical energy and is usually expressed as a percentage. Residential and commercial solar panels ...



Understanding the Specifications of Solar Panels and How to Read ...

For instance, a solar panel with a temperature coefficient of -0.50% per $^{\circ}\text{C}$ would experience a 10% reduction in productivity with a temperature increase of 20°C



What Is A Solar Panel? How does a solar panel work?

A Solar panels (also known as "PV panels") is a device that converts light from the sun, which is composed of particles of energy called "photons", into electricity that can be used to power ...



Solar panel definitions and jargon busting guide

Solar photovoltaic (PV) panels convert sunlight into usable electricity by using cells, usually made from silicon, a semiconductor material, embedded in a metal frame with a ...

How to understand and compare solar panel specifications

The effect temperature has on solar performance is represented by the temperature coefficient, which measures how much power output drops for every degree above 25°C the surface of a ...



Too many confusing solar terms? Here's a quick guide

Gigawatt (GW): We measure the cumulative capacity of community solar nationwide in terms of GW. One GW = 1,000 megawatts. Inverter: Component of a solar panel ...



A Guide to Solar Inverters: How They Work & How to ...

The first part is the power optimizer, which handles DC to DC and optimizes or conditions the solar panel's power. There is one power optimizer per solar panel, and they keep the flow of energy equal. For example, with a standard string ...



1075KWHH ESS



Downgrade: What It Is, How It Works, and Warning Signs

A downgrade is a negative change in an estimate for a stock's performance, issued by an analyst for a financial services firm. Learn how it impacts investing strategies.

Contact Us

For catalog requests, pricing, or partnerships, please visit:
<https://vdbconstruction.co.za>