

# What is the current maximum wattage of photovoltaic panels





## Overview

---

There are now dozens of solar panels that provide more than 500 watts (W) at their peak, and the level at the very top is only getting better with each passing year of development. What is solar panel wattage?

Solar panel wattage refers to the amount of power a solar panel can generate under standard test conditions (STC). Measured in watts, solar panel wattage refers to the maximum power output a solar panel can produce when exposed to sunlight.

What is a maximum power current rating on a solar panel?

The Maximum Power Current, or  $I_{mp}$  for short. And the Short Circuit Current, or  $I_{sc}$  for short. The Maximum Power Current rating ( $I_{mp}$ ) on a solar panel indicates the amount of current produced by a solar panel when it's operating at its maximum power output ( $P_{max}$ ) under ideal conditions.

What is the maximum power per solar panel?

The maximum power per solar panel is currently 670 watts. Made by Seraphim, the 670-watt SRP-670-BMC-BG is the most powerful solar panel on the market at the moment. However, this record-breaking panel is likely to be surpassed in the near future, as the rate of development in the solar industry continues to accelerate.

How much current does a solar panel produce?

This means that when this solar panel is producing 100 Watts of power under Standard Test Conditions, it will be generating 5.62 Amps of current. On the other hand, the Short Circuit Current rating ( $I_{sc}$ ) on a solar panel, as the name suggests, indicates the amount of current produced by the solar panel when it's short-circuited.

Do solar panels have a higher wattage?

A solar panel's physical size tends to strongly correlate with its wattage. As a



general rule, larger solar panels have higher power output than smaller ones. This is because larger solar panels have more surface area, meaning they can accommodate more solar cells.

How much wattage should a solar panel produce?

Understanding solar panel wattage is vital to picking a solar panel powerful enough to meet your home's electricity needs. A 250W panel should, under ideal conditions, produce 250 watt-hours (Wh) for every hour of sunlight it receives.



## What is the current maximum wattage of photovoltaic panels

---



### Solar panel output: How much electricity do they produce?

The higher the wattage of a solar panel, the more electricity it can produce. The output will also be affected by the conditions, such as where you live, the angle of the roof, ...

### How Much Energy Does A Solar Panel Produce? , EnergySage

Learn the solar panel output for major brands and panels, You can calculate your estimated annual solar energy production by multiplying your solar panel's wattage by ...



### [The 7 Most Powerful Solar Panels , 2024](#)

The maximum power per solar panel is currently 670 watts. Made by Seraphim, the 670-watt SRP-670-BMC-BG is the most powerful solar panel on the market at the moment. However, this record-breaking panel is ...

### Most efficient solar panels 2024 -- Clean Energy ...

The race to produce the most efficient solar panel heats up. Until mid-2024, SunPower, now known as Maxeon, was still in the top spot with the new Maxeon 7 series. Maxeon (Sunpower) led the solar industry for over a ...



### 150 watt Solar Panel: How Many Amps (Specifications, ...

A 12v 150 watt solar panel will produce about 18.3 volts and 8.2 amps under ideal sunlight conditions. (inc. 1kw/m<sup>2</sup> of sunlight intensity, no wind, and 25 o C temperature). The above values are based on DC (Direct current) ...

### [20+ Most Powerful Highest Watt Solar Panels](#)

2PCS Bifacial 550 Watt Monocrystalline Solar Panel Key Features: Power Output: Up to 715 W; Busbar Technology: 10 busbars; Protection: IP68 waterproof; Design: 10BB Halfcell; Warranty: 25-year; Snow ...



### Highest Wattage Solar Panels: Everything You Need to Know

This makes highest wattage panels better for applications needing maximum power generation. For more information on average solar panel costs, you can check out this ...



## Solar Panel Output and Wattage Explained (2024 Guide)

A 400-watt solar panel can produce 400 watts of power under standard test conditions (STC). However, a 400W panel will rarely produce exactly 400 watts in real-world ...

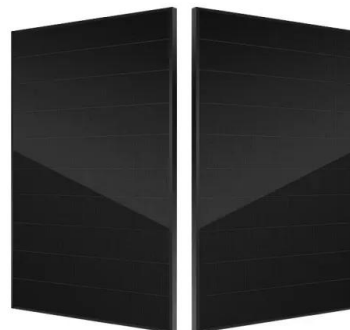


## Most Efficient Solar Panels for 2024: US Customers Still ...

The latest in rooftop solar panel technology is nearly 25% efficient. The Tiger Neo panel has a 22.52% maximum efficiency rating and a temperature coefficient of -0.29%. They tend to be 10

## [Solar Panel Wattage & Output Explained](#)

The solar panel output rating of the average residential panel is between 250 and 485 watts, but commercial modules can have a higher solar panel rating. For example, Trina Solar's ts n-type i-TOPCon solar module for ...



## Calculating Solar PV String Size - A Step-By-Step Guide

The maximum number of solar panels you can connect in a string is determined by the maximum input voltage of your inverter or charge controller. You can find this value on the inverter ...



### Solar Panel Sizes And Wattage , Sizing, Dimensions & Weight

Watt (W) and kilowatt (kW): a unit used to quantify the rate of energy transfer. One kilowatt = 1000 watts. Solar panels' rating in watts specifies the maximum power ...

TAX FREE

**Product Model**  
HJ-ESS-215A(100KW/215KWh)  
HJ-ESS-115A(50KW 115KWh)

**Dimensions**  
1600\*1280\*2200mm  
1600\*1200\*2000mm

**Rated Battery Capacity**  
215KWH/115KWH

**Battery Cooling Method**  
Air Cooled/Liquid Cooled



### 12.8V 100Ah



### Solar Panel kWh Calculator: kWh Production Per Day, Month, Year

Solar panel's maximum power rating. That's the wattage; we have 100W, 200W, 300W solar panels, and so on. In a 5.50 peak sun hour area, a 300-watt solar panel will produce 1.24 ...

### What is the solar panel peak power? Watt peak definition

Knowing the maximum power a solar panel produces helps ensure that the power supply can handle peak loads. In this way, solar panel peak power helps prevent the ...



### Solar Simplified: Easy-to-Understand Guide to Voltage, Amperage & Wattage

It represents the total power output of a solar panel. Understanding wattage is essential for determining how much energy a solar panel can produce and, consequently, how ...



### Parallel Connected Solar Panels For Increased Current

The DC current output of a solar panel, (or cell) depends greatly on its surface area, efficiency, and the amount of irradiance (sunlight) falling onto its surface. Note that while manufacture's will state a maximum or peak wattage (40W, ...

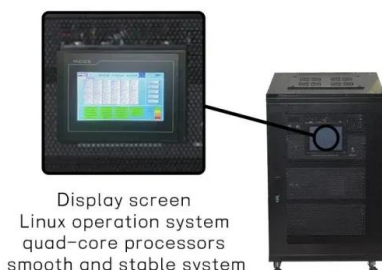


### Solar Panel Sizes and Wattage: A Comprehensive Guide to ...

The Effect of Efficiency on Solar Panel Wattage. Efficiency determines how much sunlight a panel can convert into usable electricity. Higher efficiency typically translates ...

### How to Test Solar Panels: Output, Amps & Watts

Step 2: Measure the Solar Panel's Current. Open the jaws of the clamp meter, place one of the solar panel's wires inside, and close the jaws. The solar panel's current reading will show on the display. Remember this ...



### Standard Solar Panel Sizes And Wattages (100W-500W Dimensions)

A typical 400-watt solar panel is 79.1 inches long and 39.1 inches wide. It takes up 21.53 sq ft of area. If you have a 1000 sq ft roof, and you can use 75% of that roof area for solar panels, you ...



### Solar Panel Sizes and Wattage Explained

How to Calculate Solar Panel Wattage. This wattage refers to the overall power output that a PV panel can provide in a specific amount of time. It is determined by factors ...



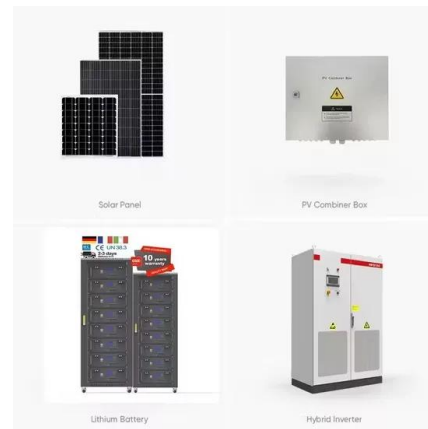
### Solar Panel Series & Parallel Calculator

3. Enter the panel's max power current in amps (denoted  $I_{mp}$  or  $I_{mpp}$ ). It may also be called the optimum operating current. 4. In the Quantity field, enter the number of this ...



### **How efficient are solar panels? Top brands compared in 2024**

Learn all about solar panel efficiency: How high-efficiency solar panels stack up against each other and what factors impact efficiency. \*Based on an EnergySage ...



### **Solar Panel Series Vs Parallel: Wiring, Differences, And Your Right**

ACOPOWER 600 Watt Solar Panel Kit, 6x100W Solar Panels with LCD Charge Controller/Mounting Brackets/Y Connectors/Solar Cables/Cable Entry housing(600W ...





### 59 Solar PV Power Calculations With Examples Provided

46. Solar Panel Life Span Calculation. The lifespan of a solar panel can be calculated based on the degradation rate:  $L_s = 1 / D$ . Where:  $L_s$  = Lifespan of the solar panel (years)  $D$  = ...



### Solar Charge Controller Sizing and How to Choose One

This two-stage regulation is the perfect fit for a system that may experience little energy use. PWM controllers are best for small scale applications because the solar ...

### [The 7 Most Powerful Solar Panels in 2024](#)

What is the maximum power per solar panel? The maximum power per solar panel is currently 670 watts. Made by Seraphim, the 670-watt SRP-670-BMC-BG is the most powerful solar panel on the market at the ...



LFP 12V 200Ah

### Understanding the Specifications of Solar Panels and

What are 500W Solar Panel Specifications? On the basis of the solar panel manufacturers and solar panel model, two 500-watt solar panels can have varying ...





### Solar Panel Output Voltage: How Many Volts Do PV ...

The is the voltage when the solar panel produces its maximum power output; we have the maximum power voltage and current here. Here is the setup of a solar panel: So I purchased a 400 watt solar panel setup with the Anderson ...



## Contact Us

---

For catalog requests, pricing, or partnerships, please visit:  
<https://vdbconstruction.co.za>