

What kind of sleeve is used for photovoltaic panel columns





Overview

As the name implies, your solar system will be located on the ground. The main advantage of ground mounted systems is that there is a wide range of options to choose from, depending on your location, your needs and the proposed design. Ground mounted solar racking options you can choose from are: .

To give you an idea of the installation process of a typical ground mounted system, here is a breakdown of the most important steps, particularly for a foundation mount type.

Roof mounted solar panels are the most common selection for most households. Reasons for this vary but the main one is the cost. Generally, roof.

We have introduced the most usual solar panel installation types and procedures of different mounting systems. Now, the question that may arise is Which type is the best for you?

There.

Now that you have a good idea about the solar panel roof mounting systems options, it's good to know how the installation is done. The usual process begins with this set of.

What are the different types of solar panel protective covers?

Types of Solar Panel Protective Covers: We evaluated and recommended different types of covers based on the client's needs: Grid or Mesh Covers: These covers allow solar panels to continue absorbing sunlight while protecting them from birds and large debris.

Are solar panel protective covers useful?

If so, you might find solar panel protective covers useful! They're pretty easy to install, and most types are budget-friendly. Solar panel covers protect your solar panels against several environmental factors that can damage them. With the right ones, your solar panels will be more efficient, and you'll have



less maintenance work.

How do I choose a solar panel protective cover?

Choosing a suitable type of solar panel protective cover ensures that solar panels perform optimally. Considerations when choosing a solar panel cover include panel size and shape, cover material, and potential environmental hazards.

What is a solar panel cover?

Fixture Covers: Fixture covers can shield your solar panels from unfavorable weather. They normally attach to the solar panel frame and are constructed of aluminum or stainless steel. **Retractable Covers:** When not in use, a retractable solar panel cover can be folded back over the panels.

Do solar panel covers work?

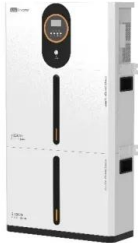
Solar panel covers protect your solar panels against several environmental factors that can damage them. With the right ones, your solar panels will be more efficient, and you'll have less maintenance work. In this article, I share more about solar panel covers and list five types that work. You'll also read about when and when not to use them.

Which solar panel covers are best?

Transparent Plastic Covers: These solar panel covers are constructed of transparent plastic and are clear in color. They shield your panels from dust, bird droppings, and other debris while still letting sunshine through. **Reflective Covers:** If you reside in a region that experiences extreme heat, reflective solar panel covers are advised.



What kind of sleeve is used for photovoltaic panel columns



Which Semiconductors Are Used in Solar Cells and ...

Semiconductor devices are key in solar technology. They use special properties to change sunlight into electricity. At the core of a solar panel, the semiconductor junction turns light into power, showing the magic of solar ...

[What Glass is Used for Solar Panels](#)

Different solar panels have different glass widths depending on their goals. A thin-film solar panel is the cheapest type of solar panel on the market so it uses a relatively thin layer of standard glass. Crystalline solar ...



Comprehensive Guide for Solar Panel Mounting ...

Selecting appropriate mounting hardware is vital for solar panels' optimal performance and longevity. The suitable mounts secure the panels firmly and influence their energy absorption efficiency by positioning ...



The 6 types of solar panels , What's the best type? [2024]

The most efficient commercially available solar panel is a monocrystalline solar panel, which has an average efficiency rating of 18-24%. Perovskite solar panels have been ...



Types of PV solar panels: description and performance

This type of solar panel can be clearly distinguished from a polycrystalline one because, in the polycrystalline, the cells do not have rounded corners, and they are perfectly ...



Solar Panel Brackets: The Ultimate Guide, types and best options.

In conclusion, solar panel brackets are an essential component of a solar panel system. They provide a secure and reliable mounting solution for solar panels, while also ...



A Guide to Large Photovoltaic Powerplant Design

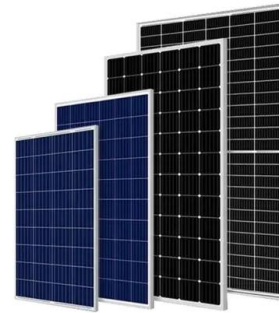
All decisions regarding the engineering of a large solar PV power system must be carefully considered so that initial decisions made with cost savings in mind do not result in ...





Solar Panels Buying Advice

The most common type of solar panel system used for domestic homes is PV - photovoltaic - panels. They collect energy from the sun in photovoltaic cells, which is then passed through an ...



Solar Panel Wiring Basics: Complete Guide & Tips to ...

There are two types of inverters used in PV systems: microinverters and string inverters. (terminal cover, strain reliever, and compression sleeve). Insert the upper components (safety foil, male/female ...

Solar Panel Protective Covers: How they Work and their ...

Solar panel protective covers prevent overload by preventing solar energy absorption when the system is not in use. This addresses concerns about overcharging batteries and potential damage to solar panels when they ...



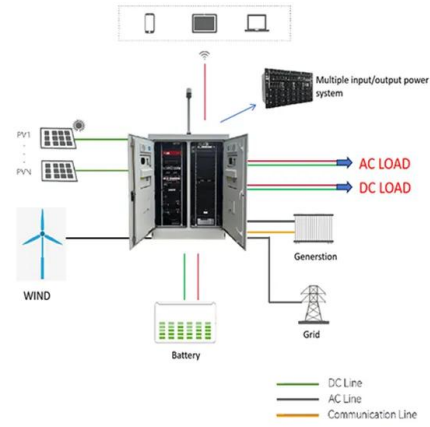
Types of Solar Panels: On the Market and in the Lab ...

A solar panel system is an inter-connected assembly, (often called an array), of photovoltaic (PV) solar cells that (1) capture energy emanating from the sun in the form of photons; and (2) transform that solar energy directly into electricity. ...



What Materials Are Used in Solar Panels? A Detailed ...

Understanding the Basics of Solar Panel Composition. Solar panels use solar cells to catch sunlight and turn it into electricity. This is called the photovoltaic effect. It's important to know what makes up a solar panel to ...



Type of Wire Used for Solar Panels? (Best + Installation)

An outer Silicon-based plastic sleeve protects the wire against UV radiation and must be fire retardant and not be attractive for rodents to gnaw at. If you use Romex in a ...



1075KWHH ESS

Do Solar Panel Protective Covers Work?

The cover you select should be compatible with your specific solar panels and improve their efficiency and lifespan. Solar panel protective covers can guard your solar setup against harsh weather, dust, debris, and ...



Solar Panels: What Wavelength of Light Do They Use?

The type of light a solar panel can change into energy depends on the band-gap of its materials. The Band-Gap Concept. The gap between the valence and conduction bands ...





Photovoltaic Cable Basics: From Selection To Installation

Learn about the types of photovoltaic cables, their features, and how to select and install them for an efficient and safe solar power system. They're crucial for ensuring ...



[4 Different Types Of Solar Panels \(2022\): Cost](#)

Understanding Solar Panels. All types of solar Panels are used to convert solar energy into electricity. Each panel consists of several individual solar cells. Most commonly ...

Different Types of Sleeves with Names and Pictures

There are two basic types of sleeve: Straight types of sleeves and; Shaped types of sleeves; 1. Straight Sleeve Types: The straight sleeve does not drape along the natural ...



Different Types Of Solar Panels For Your Home

However, many of these solar panel types are still in the research or modification stage. Concentrated PV Cell (CVP and HCVP) Let's start with concentrated PV solar ...



Investigation of column-to-base connections of pole-mounted solar panel ...

The column-to-base connection of the PV system consists of four parts: the post, rib plate, base plate, and anchor, as shown in Fig. 1. A post is a steel column that is connected ...

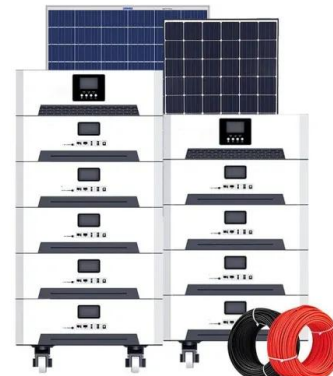


(PDF) Design considerations for photovoltaic energy harvesting ...

A photograph of the sleeve with a battery load, dc-dc converter, and PV panels covering the forearm. The panel dimensions determine the placement on the sleeve. Figures - ...

Solar Panel Protective Covers: How they help, Types, etc

Types of protective covers for solar panels. You'll undoubtedly discover a shielding solar panel cover that meets your requirements. What's available on the market is as follows:
Transparent Plastic Covers: These solar ...



[Types of Solar Panel Protective Covers](#)

The type of protective cover used can impact the solar panel's efficiency, with grid or mesh covers allowing continued energy absorption. In contrast, manufacturer-created covers may reduce or prevent absorption, ...



Solar Panel Connectors Guide , All You Need to Know

Nowadays, the SolarLok, also referred to as the Tyco connector for wires, is considered obsolete. This type of solar panel connector is typically used in earlier installations to connect one solar panel module to another, ...



LFP 12V 200Ah



The Complete Guide for Solar Panel Connectors

The solar panel connector is used to interconnect solar panels in PV installations. Their main task is ensuring power continuity and electricity flow throughout the whole solar array. There are many types of solar ...

Single column photovoltaic support structure system

The utility model is related to photovoltaic bracket fields, more particularly to a kind of single column photovoltaic support structure system, including column, cant beam, photovoltaic ...



Ground Mounted PV Solar Panel Reinforced Concrete Foundation

A ground mounted solar panel system is a system of solar panels that are mounted on the ground rather than on the Type = Sandy soil Subgrade Modulus = 100 kcf Allowable Pressure = 2.0 ...





Different Types of Solar Mounting Structures

Solar panels perform best when exposed to direct sunlight. For that to happen, modules get mounted at an angle facing the south. This is where solar panel mounting ...



Grouted sleeve connections used in precast reinforced concrete

The traditional precast concrete column-to-column connections are widely used in the prefabricated concrete frame structures in China. However, many studies on the column ...



Photovoltaic Fasteners: A Comprehensive Guide on Material, Type...

In photovoltaic systems, a variety of different types of fasteners can be employed depending on their function and application scenario. Definition: Screws and bolts ...



Contact Us

For catalog requests, pricing, or partnerships, please visit:
<https://vdbconstruction.co.za>