

Where is the power button on beats solo





Overview

Where is the power button on the beats solo3 wireless?

Looking closely at the discrete stylish design of the Beats Solo3 Wireless, you won't have any trouble looking for the power button. It's located on the right earcup, under the Beats logo dominating the headphones' hardware. For reference, it's the key found above the Fuel Gauge lights and the charging port.

How do I charge my beats solo3?

Look over your headphones' earcups and locate the power button. The Beats Solo3 has its power button right above the micro USB charging port. Remove the ear cushion on the right earcup to better access the power key. You won't need any extra tools for this since you can do it by hand.

Why is my Beats Solo 3 power button not working?

Non-functional power buttons are quite common but fortunately, there are some simple fixes that can help you get your Beats Solo 3 headphones up and running again. Some of the steps you can undertake to fix the button include: The most common cause of power button failure is a dead battery.

How do I connect my Beats Solo 4 to a different device?

If you turn your headphones on and the indicator light turns on but doesn't flash, your headphones are already paired with a device. In that case, follow these steps to connect your headphones to a different device. With Bluetooth enabled on your iPhone or iPad, press the power button on your Beats Solo 4 for 3 seconds.

How do I Turn on my beats solo3?

If you're a first-time Beats Solo3 user, you may get confused about how to turn on your Apple headphones. Worry not, though, because you can quickly locate the power button on the right earcup if you look hard enough. All you



need to do is press this specific key for a few seconds, and your device will turn on or off according to your command.

How to connect beats solo3 wirelessly?

Turning on your Beats Solo3 is as easy as pie. All you need to do is press the power button on the right earcup for a second or so. Wait for a few moments and hold the headphones near the source device you intend to use. On-screen instructions will appear, which will guide you on how to link the Bluetooth headphones wirelessly.



Where is the power button on beats solo



Resolving 'Beats Solo 3 Not Charging' Issue: [SOLVED]

1. Performing a Soft Reset on Beats Solo 3. Power off your headphones. Hold down the power button and volume down button simultaneously for about 10 seconds. Release the buttons when you see the LED lights flash. Power on your headphones and attempt to charge them again.
2. Reconnecting to Bluetooth Devices

Beats Solo 4 Review: Light in Weight and Quality , Man of Many

The Beats Solo 4 has undergone some cosmetic upgrades, copped a slightly refreshed design and returned to the market in a big way, but for \$329, are these new versions really worth it? In terms of controls, the Beats are simple. There are two buttons: the first, a small power button on the right can, which can be pressed for a second or so



beats solo3 will not turn on fix? (power button repair!)

If you hold the power button and your beats solo headphones do not turn on then it could be an issue with the power button. In this case it was the signal wi

How To Activate Noise Cancellation On Beats Solo 3

To activate the noise cancellation feature, locate



the power button on your Beats Solo 3 headphones. The power button is usually located on one of the ear cups. Press and hold the power button for a few seconds until you see the LED indicator light up. This indicates that your headphones are now powered on.



TAX FREE

ENERGY STORAGE SYSTEM

Product Model
HJ-ESS-215A(100KW/215KWh)
HJ-ESS-115A(50KW/115KWh)

Dimensions
1600*1280*2200mm
1600*1200*2000mm

Rated Battery Capacity
215KWH/115KWH

Battery Cooling Method
Air Cooled/Liquid Cooled

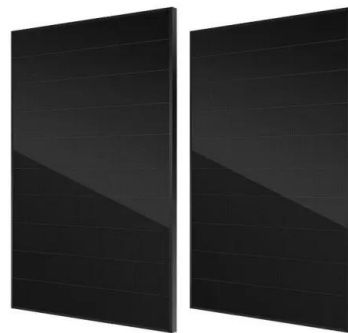


[Set up and use your Beats Solo 4](#)

To turn on your Beats Solo 4, press and hold the power button on the left ear cup for 1 second. Charge your Beats Solo 4. To charge your Beats Solo 4, plug them into a power source using the included USB-C to USB-C cable. As your Beats Solo 4 charge, the light on the right ear cup pulses red. When your headphones are at least 95 percent charged

[Set up and use your Beats Solo 4](#)

With Bluetooth enabled on your iPhone or iPad, press the power button on your Beats Solo 4 for 3 seconds. Hold your Beats Solo 4 within 2 inches of your unlocked iPhone or iPad, and follow the instructions on your iPhone or ...



Where is the Power Button on Beats Headphones? Quick Guide ...

The Beats Solo 3 headphones have the power button located on the right ear cup, while the power button on the Beats Wireless headphones is located on the left ear cup. If you are having trouble finding the power button on your Beats headphones, refer to the user manual or the manufacturer's website for specific instructions for your model.



Set up and use your Solo3 Wireless headphones

To turn your headphones on or off, press and hold the power button for 1 second. To charge your headphones, plug them into a power source using the included micro USB ...



[Can't reset Beat Solo Pro : r/beatsbydre](https://r/beatsbydre)

Hey, I found this thread almost a year later and was also having issues resetting my Beats Solo Pro. I held down the power button (on the left ear piece) and after turning them back on, it was able to be re-paired with my phone (Huawei Mate 40 pro).

Beats Solo 4 review

To pair the Beats Solo 4 to your phone, you can either use the fast pair or force the connection the old-fashioned way. Fast pair: Turn your headphones on near your enabled source device; Tap the option to pair; Traditional pair: Turn on your headphones, holding the power button down long enough to enable pairing mode.



Sample Order
UL/KC/CB/UN38.3/UL



How to connect your Beats Solo 3 to any device

Put your Beats Solo 3 in pairing mode by pressing and holding the power button for five seconds. To connect them with a Mac, go to System Settings > Bluetooth > Devices > select Beats Solo 3 and click Connect. To pair these headphones with Windows, head to Bluetooth and other device settings > Add device > Bluetooth > Select Beats Solo 3.



Beats Solo Pro review

For the first time in Beats' Solo range, Apple has introduced noise-cancelling technology - and it's good. It's doesn't manage the almost spooky level of silence that you'll get from Bose QC35 headphones, and it can't pip that of the excellent Sony WH-1000XM3s either. But it does a good job at blocking out a good chunk of background noise all the same - from ...

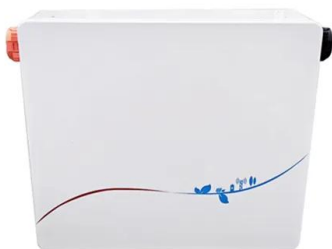


Finding the Power Button on Your Beats: Where to Look and ...

For example, on Beats Studio headphones, the power button can be found on the left ear cup, while on Beats Solo headphones, it is located on the right ear cup. Meanwhile, on Beats Powerbeats Pro, the power button is integrated into the earbuds themselves.

How To Turn On Noise Cancelling On Beats Solo 3

To check the battery level of your Beats Solo 3 headphones, simply locate the power button on the right earcup. Press and hold the power button for a few seconds, and the fuel gauge LED lights will illuminate to ...



Solo 3 Power Button Replacement for Beats Solo 3 Headphones Power ...

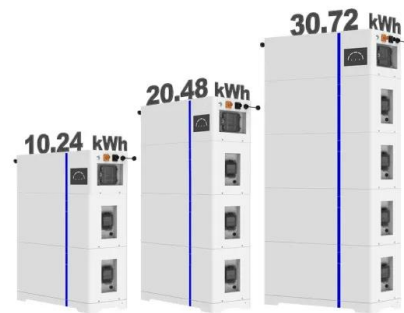
Perfect Compatible with: Beats Solo3, Beats Solo 3, Beats Solo3 A1796. The full package contains: 1 x Solo3 Power On/Off Button board, 1 x Crowbar, 1 x Phillips screwdriver, 1 x Paddle. How to repair: Step 1: Get Crowbar,Screwdriver,Paddle (package included in) Step 2: Use crowbar+Paddle to pry the headphone logo cover. Step 3: Use screwdriver to remove the ...



How To Set Up And Troubleshoot Beats Solo 3 For Multiple Devices

Setting up Beats Solo 3 Turning on Beats Solo 3. When it comes to setting up your Beats Solo 3 headphones, the first step is to turn them on. This is a simple process that can be done by pressing the power button located on the right ear cup. Once you hear the familiar sound indicating that your headphones are powered on, you're ready to move

ESS



How to Turn Off Beats Solo Pro: Headphones Support Guide

Press and hold the power button for 1 second. Look for the power button on the bottom of the right ear cup and hold it down with your finger. After that, your headphones will disconnect. The next time you want to turn them on, just hold the power button for 1 second again.

[Set up and use your Powerbeats](#)

To pause or play audio, press the "b" button once. To skip to the next track, press the "b" button twice. To listen to the previous track, press the "b" button three times. Change the volume. To control volume, use the volume ...



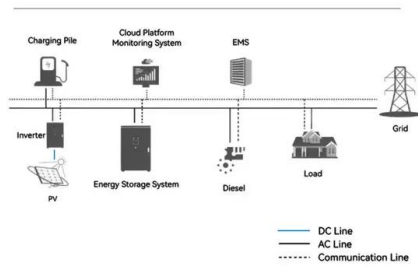
How To Activate Pairing Mode On Beats Solo 3: A Step-by-Step ...

Using the Power Button. To on your Beats Solo 3 headphones, you will first need to locate the power button. The power button is typically located on the right ear cup of the headphones. Press and hold the power button for a few seconds until you see the LED indicator light start flashing. This indicates that the headphones



are now in and ready

System Topology



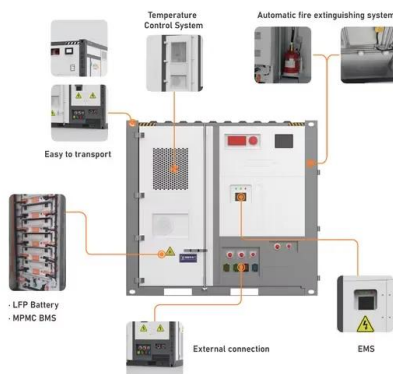
[How To Pair Beats Solo 3 \(Step-By-Step Guide\)](#)

Getting Beats Solo 3 Headphones into Pairing Mode. The first step of pairing Beats Solo 3 headphones to any device is to power them on and get them into pairing mode.. To power on the headphones, press the power ...



[Beats Solo 3 Will Charge But Won't Turn On](#)

The good news is that if your Beats Solo 3 will still charge, there's hope to fix the problem. Most often, Beats Solo 3 won't turn on due to a drained battery or software glitch that can be fixed with a reset. Try charging your headphones for at least 30 minutes, then press and hold the power button for 10 seconds.



[How To Turn Off Beats Solo 3? \[4 Methods\]](#)

3. Disconnect Beats 3 Bluetooth to Turn Off. Since Solo 3 are wireless Bluetooth earphones, disconnecting them from your device's Bluetooth will also power them down:.

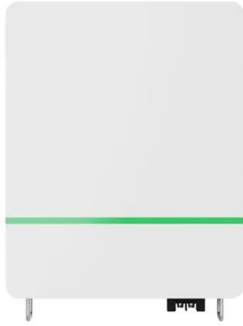
- Go to Bluetooth Settings on Your Device. On an iPhone, Android, iPad, or other device, open the Bluetooth settings in your Settings app.;
- On a Windows or Mac laptop, open Bluetooth settings ...





[How To Turn On Your Beats Solo 3](#)

The power button on Beats Solo 3 headphones is on the left ear cup. It's not just any button; it's designed to blend in with the sleek appearance of the headphones. To correctly identify the power button, look for a small circular button on the back part of the left ear cup. This button is flush with the surface, making it a bit less



[Beats Solo 3 Power Button Not Working](#)

3. Release the power button. Your Beats Solo 3 will now reset and should turn on properly. **Beats Solo 3 Power Button Replacement**. If you're having trouble with your Beats Solo 3 power button, don't worry - it's a relatively easy fix. The first thing you'll want to do is make sure that the battery is fully charged.



Beats Solo 3 Power Button Not Working , How to Fix it?

This guide is all about Troubleshooting the Beats solo 3 power button. **Beats Solo 3 Power Button Not Working**. Are you trying to turn on your Beats Solo 3 Headphones? Because the power button of your headphones is not working. Before trashing it and buying a new headphone, consider the ways to fix this problem. A well-equipped Beats Solo 3 may



Why is my Beats Solo 3 power button not working?

The power button on your Beats Solo 3 is a weak link when it comes to **hardware malfunction**. It can get damaged with constant use, dirt, and humidity. If your Beats Solo 3 has been in use for a long time, it is a good idea to clean the button.





Fix Beats Solo 3 Won't Turn ON Lights Not Working

So, connect the power and let your device charge for 3-4 hours. Afterward, press the power button and see if the lights come ON. Tip#4. Fix the Power Button. A bad or malfunctioning power button is another reason your Solo 3 is not turning ON. The device and its hardware are not defective, rather the button has lost connection.

[Beats Solo 3 Won't Turn On Or Charge](#)

To restart your Beats Solo 3: Hold down the power button for about 10 seconds until you see the light turn off. Hold down the power button again after a few seconds to turn it on; if it turns on then connect it with the charger and check if it charges. If restarting does not solve your problem then try the next solution. 4. Hard Reset Beats Solo 3:



Mastering Your Beats Solo 3: A Step-by-Step Guide

When charging, you'll notice that the power button flashes quickly. This indicates that your headphones are charging. The battery takes around 10-15 hours to fully charge, depending on your charging method. Bluetooth Pairing and Connectivity. Once your Beats Solo 3 is charged, it's time to connect them to your device.

[Set up and use your Solo Pro headphones](#)

To check your battery level, press and release the mode button and check the status of the LED. The LED will pulse red if your battery is 0%-80% charged, pulse white if it's 80%-99% charged, and remain lit white when it's fully charged. Pair your Solo Pro headphones. Learn how to pair your headphones with your device.



Beats Solo 3 Flashing Red & White (Top Fixes)

Answer: The Beats Solo 3 wireless headphones do not have a reset button. However, resetting the headset is straightforward. However, resetting the headset is straightforward. Press the power and volume down buttons simultaneously for 10 seconds .



Beats Solo 3 Not Turning On [SOLVED!]

To hard reset, your Beats Solo 3, press and hold the POWER + VOLUME DOWN button simultaneously for 10 seconds till you see the charging light start flashing. After that, ...



How To Turn Off Beats Solo 3 - Step-by-Step Guide

One of the most frustrating issues that users may face is when the power button on their Beats Solo 3 headphones doesn't respond. If you find yourself in this situation, try the following steps: Check the battery level: Ensure that your headphones have enough battery power to turn off. If the battery is critically low, they may not respond.





Mastering Your Beats Solo 3: A Step-by-Step Guide

With the power button, you can toggle play/pause, skip, and adjust the volume of your music. The playback controls are conveniently located on the left earcup, giving you ...



Contact Us

For catalog requests, pricing, or partnerships, please visit:
<https://vdbconstruction.co.za>