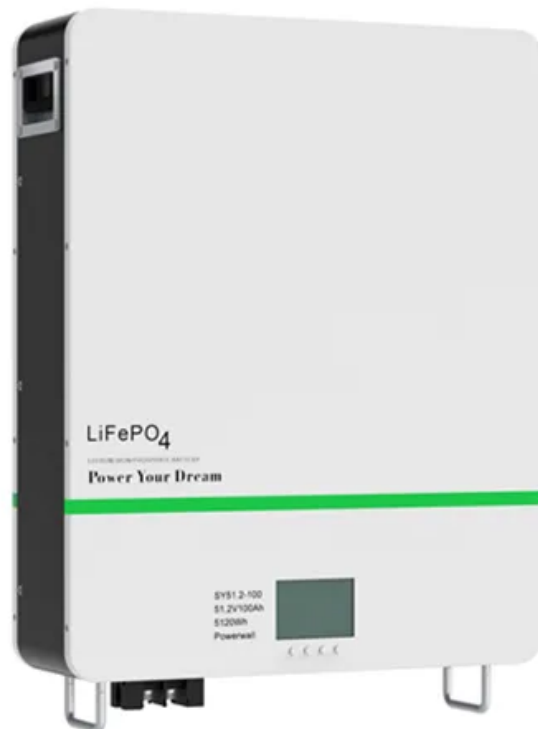


Which planet closest to sun





Overview

The earliest known recorded observations of Mercury are from the tablets. These observations were most likely made by an astronomer around the 14th century BC. The name used to designate Mercury on the MUL.APIN tablets is transcribed as UDU.IDIM.GU\U4.UD ("the jumping planet"). Observations of Mercury date back to the 1st millennium BC. The

Which planet is closest to the Sun?

Mercury is the closest planet to the Sun and is the smallest of the eight planets being only slightly larger than our moon. Mercury's surface temperatures vary in extremes reaching day temperatures as high as 800°F (430°C) and dipping as low as -290°F (-180°C), lacking the atmosphere to hold the heat at night.

Which planets orbit the Sun?

Planets and other objects in our Solar System. Credit: NASA. First the quick facts: Our Solar System has eight "official" planets which orbit the Sun. Here are the planets listed in order of their distance from the Sun: Mercury, Venus, Earth, Mars, Jupiter, Saturn, Uranus, and Neptune.

What is the smallest planet in the Solar System?

NASA image of Mercury. Size: Mercury is about 3,032 miles (4,880 kilometers) across. That makes it the smallest planet in the solar system. In fact, Mercury is just a little larger than Earth's Moon. Distance from the Sun: Mercury is the closest planet to our star, with its average distance from the Sun being 36 million miles (58 million km).

What are the four closest planets to the Sun?

Terrestrial planets include the four closest planets to the Sun located between the Sun and the asteroid belt; Mercury, Venus, Earth, and Mars. Astronomers who use the geophysical definition of a planet would also include the Moon as a terrestrial planet. Terrestrial planets are planets with a solid surface, often made up of rock or metals.



Which planet is 'closest to Earth' when averaged over time?

For example, essentially because Mercury is closer to the Sun than Venus, Mercury spends more time in proximity to Earth; it could, therefore, be said that Mercury is the planet that is "closest to Earth when averaged over time".

Which planet is farthest from the Sun?

Neptune is the farthest planet from the Sun in our solar system. Neptune is the windiest planet in our solar system, with wind speeds reaching up to 1,300 miles per hour. Neptune a huge spinning storm known as 'The Great Dark Spot'. It has the strongest winds ever recorded on any planet in the solar system.



Which planet closest to sun



Planets of our Solar System

It is the closest planet to the Sun, about two fifths of the distance between the Sun and Earth. This means the side facing the Sun can get very hot - up to 430 C during the day. But Mercury has

Solar system planets, order and formation -- a guide

The order of the planets in the solar system, starting nearest the sun and working outward is the following: Mercury, Venus, Earth, Mars, Jupiter, Saturn, Uranus, Neptune and then the



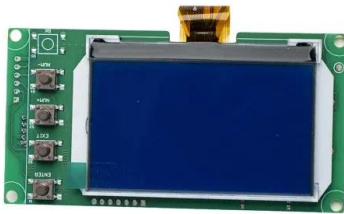
Orbital Periods of the Planets

A year is defined as the time it takes a planet to complete one revolution of the Sun, for Earth this is just over 365 days. This is also known as the orbital period. Unsurprisingly the the length of each planet's year correlates with its ...

Mercury

Mercury is the smallest planet in our solar system and the nearest to the Sun. Mercury is only slightly larger than Earth's Moon. Its surface is covered in tens of thousands of impact craters. Despite its proximity to the Sun, Mercury is not

...



Which planet is the second closest to the sun?

Mercury formed about 4.5 billion years ago when gravity pulled swirling gas and dust together to form this small planet nearest the Sun. Like its fellow terrestrial planets, Mercury has a central core, a rocky mantle and a solid crust. Mercury is the smallest planet

The Planets In Order , From The Sun, Information, History

The third closest planet to the Sun. Earth is at an average distance of 150 million km / 93 million mi or 1 AU away from the Sun. It only has one moon and several other smaller satellites. Earth is the biggest terrestrial planet having a diameter of 12.760 km / 7.926 mi. Surface temperatures on Earth are around 14 degrees Celsius.



Planets in Order From the Sun , Pictures, Facts, and Planet Info

The earliest known recorded observations of Mercury are from the MUL.APIN tablets. These observations were most likely made by an Assyrian astronomer around the 14th century BC. The cuneiform name used to designate Mercury on the MUL.APIN tablets is transcribed as UDU.IDIM.GUU4.UD ("the jumping planet"). Babylonian records of Mercury date back to the





1st millennium BC. The

Planet Closest to the Sun

In addition to being the planet closest to the Sun, Mercury is also the smallest by mass. If you ignore the former planet Pluto, it is also the smallest by surface area, as well. The planet has

12V 10AH



Mercury: Size, distance from the Sun, orbit , Astronomy

Mercury is the closest planet to the Sun, with its average distance about 36 million miles (58 million km). Size: Mercury is about 3,032 miles (4,880 kilometers) across. That makes it the smallest

What Are the Solar System Planets in Order?

You know Saturn and Venus and Mars. Can you put the eight planets of the solar system in the correct order? There are several ways to do this. Or you could order the planets by weight (mass). Then, the list from most massive to least massive would be: Jupiter (1.8986 x 10²⁷ kilograms), Saturn (5.6846 x 10²⁶ kg), Neptune (10.243 x 10²⁵ kg), Uranus ...



Our Solar System

Our solar system is made up of a star--the Sun--eight planets, 146 moons, a bunch of comets, asteroids and space rocks, ice, and several dwarf planets, such as Pluto. The eight planets are Mercury, Venus, Earth, Mars, Jupiter, Saturn, Uranus, and Neptune.



What is the closest planet to the Sun?

The closest rocky planet to the Sun is Mercury, it is about 57,910,000 km from the sun. It is also the closest planet of any type to the Sun. Its been known since ancient times when ancient astronomers noticed what looked like a star moving across the sky, a wanderer from where it ...



What's The Closest Planet To The Sun?

Being the closest planet to the sun, it's no surprise that Mercury can get incredibly hot. At an average of a balmy 354 degrees Fahrenheit (179 Celsius), the surface of Mercury is hot enough to melt most metals, including tin!

Facts About Mercury , Closest Planet to The Sun

Explore the closest planet to the Sun! Find out how long a day on Mercury is and how many moons the planet has. Also, keep up with the upcoming Mercury events! The smallest planet spins slowly about its axis -- one rotation takes 59 Earth days. However, its





Mercury: Planet Closest to the Sun

Mercury: Planet Closest to the Sun, Level 1 ,
Mercury: Planet Closest to the Sun, Level 2
National Aeronautics and Space Administration
NASA explores the unknown in air and space,
innovates for the benefit of humanity, and
inspires the world through discovery.

Order of the Planets From The Sun

The nearest planet to the Sun is Mercury. Though it is very near to the Sun, it is not the hottest planet at all. The smallest among the inner planets has actually temperature of 450 degrees Celsius during day time while it drops to a very frigid negative 170 degrees



Which planet is the closest to the sun?

Mercury, the planet closest to the sun, has a faster revolution around the sun compared to other planets. This is why it was named after the Roman god known for his speed, the messenger god. It is important to note that self-medication is not recommended.

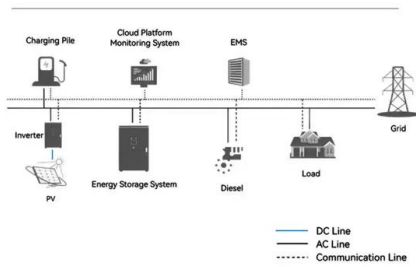
When the Earth is farthest and closest to the Sun

Discover the Earth's farthest and closest points to the Sun. Learn about perihelion and aphelion, the key orbital positions. Explained here!
Perihelion and Aphelion dates, year by year All aphelion/perihelion times are given in local New York time. 2023 Perihelion: January 4, 11:17.
January 4, 11:17.





System Topology



What is the closest planet to the Sun?

Mercury is the closest planet to the Sun, but only the second hottest Things can get pretty warm out there, 58 million kilometers (36 million miles) away from the Sun. The temperature on the sunlit side of Mercury reaches 430 degrees Celsius. Only one planet

Mercury Facts

Introduction Mercury's surface temperatures are both extremely hot and cold. Because the planet is so close to the Sun, day temperatures can reach highs of 800°F (430°C). Without an atmosphere to retain that heat at night, temperatures can dip as low as -290°F (-180°C). Despite its proximity to the Sun, Mercury is not the hottest [...]



The order of the planets closest to the sun

Note: Pluto is no longer considered a planet since August 24, 2006 according to the order of the planets closest to the sun. The Solar System Is The Solar System is a collection of celestial banda (planets and other celestial bodies) consisting of a star called the Sun and all objects that are bound by gravity.

Mercury , The Closest Planet to the Sun

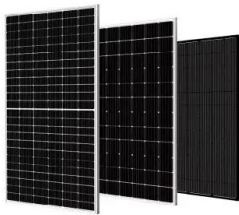
Of the eight planets in the solar system, Mercury is the closest planet to the sun is also the smallest planet only slightly larger than our moon. Despite being the smallest planet with a mean diameter of 3,032 miles (4,879 km), Mercury is the second densest





18.2: Inner Planets

The smallest planet, Mercury, is the planet closest to the Sun. Because Mercury is so close to the Sun, it is difficult to observe from Earth, even with a telescope. However, the Mariner 10 spacecraft, shown in Figure below, visited Mercury from 1974 to 1975.



What is the planet nearest to the Sun?

Mercury is the nearest planet to the Sun, and it never strays more than 30 degrees from it. This proximity enables the celestial object to complete two orbits around the fiery heart of the universe in a single year. Interestingly, Earthlings can only see one side of the



The Sun's Neighbors: Which Planets are Closer?

closest planet to the Sun, is a fascinating celestial body that holds many secrets waiting to be uncovered. In terms of distance, Mercury is approximately 36 million miles away from the Sun, making it the first planet in our solar system. Its proximity to

Mercury Facts

Mercury Facts. The smallest planet in our solar system and nearest to the Sun, Mercury is only slightly larger than Earth's Moon. From the surface of Mercury, the Sun would appear more than three times as large as it ...





Test certification
CE FC



Planet Sizes and Locations in Our Solar System

Mercury is the closest planet to the Sun, orbiting at an average distance of 36 million miles (58 million kilometers). Mercury is 57 million miles closer to the Sun than Earth. Explore Mercury

which planet is closest to the sun? Crossword Clue

Answers for which planet is closest to the sun? crossword clue, 7 letters. Search for crossword clues found in the Daily Celebrity, NY Times, Daily Mirror, Telegraph and major publications. Find clues for which planet is closest to the sun? or most any crossword answer or ...



[Mercury: the closest planet to the Sun](#)

Mercury is the closest planet to the Sun in our solar system and the smallest of the eight major planets. It has a diameter of about 4,880 kilometers, making it only slightly larger than our Moon. Due to its small mass, its surface gravity is only 38% of Earth's gravity.

Order of the Planets by the Distance From the Sun

Jupiter, the largest planet in the solar system, is 483.8 million miles away from the sun. It has a diameter of 88,729 miles, which means that you can fit all the other planets inside it and over a dozen Earths can line up across it. It takes Jupiter 11.862 Earth years to





The Planets in Order of Distance, Size, Mass & More

Mercury is the first planet in our solar system. It is the closest planet to the Sun, located at an average distance of 36 million miles (58 million kilometres) from our star. Because this small planet is so close to the Sun's ...



Contact Us

For catalog requests, pricing, or partnerships, please visit:
<https://vdbconstruction.co.za>