



VDB Solar Solutions

Which position is better for photovoltaic panel installation





Overview

What is the optimal tilt angle of photovoltaic solar panels?

The optimal tilt angle of photovoltaic solar panels is that the surface of the solar panel faces the Sun perpendicularly. However, the angle of incidence of solar radiation varies during the day and during different times of the year.

What is the best angle for a solar panel system?

What's on this page?

The best angle for a solar panel system in the UK is between 20° and 50°. At this kind of angle, your solar panels will be exposed to more sunlight, which will lead to more energy production and larger savings.

Which direction should solar panels be positioned?

When you position solar panels based on true south and the azimuth angle (the sun's angle in relation to true north and true south), you get the most optimized orientation for production and efficiency. Solar Tip: If you're not sure which direction your roof faces, you can look your address up on Google Maps.

What is the best angle for solar panels in 2024?

Benefit from the BEST Solar Deals in 2024 and SAVE hundreds per year on your bills! The best angle for solar panels in the UK is between 30° and 40°. To ensure that your solar panels can produce energy optimally, they should be installed on a south-facing part of your roof.

What angle should solar panels be installed on a flat roof?

Installing panels at a fixed angle might capture less sunlight during winter when the sun is lower, meaning you won't get as much energy for your home. The optimum angle for solar panels on flat roofs is around 30 to 35°. This angle helps the panels balance, maximising solar energy production and



allowing rain to flow off them easily.

Where should solar panels be installed?

To maximise the output of solar panels, you will want to have them installed on a south-facing section of your roof. South-facing solar panels in the UK receive the most sunlight exposure, as the sun is in the sky the most in this direction.



Which position is better for photovoltaic panel installation



A guide for where to place your solar panels , Geo ...

The position of solar panels can be hugely significant in determining their output; and when your panels' output affects their cost-effectiveness it is essential to get it right. Whether you are having a domestic ...

Solar Panel Installation FAQs: Your Top Questions Answered , OVO

Our head of solar, Scott Duncan, answers all the important questions you might have before deciding to install solar panels. 1. How do solar panels work? Solar power uses a ...



Wind turbines vs solar panels: which is better?

If you're serious about solar panel installation and want to speak with an expert to discuss your options, get in touch with a member of the team at BOXT. Upfront cost. When ...

What's the best angle and direction for solar panels?

The optimal angle for solar panels in the UK is between 20° and 50°. UK-based solar panels generate most energy when facing south. Solar panel orientation depends on where in the world you're located. Solar panels can ...



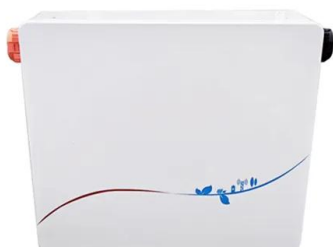
A Complete Guide to Optimizing Solar Output with Panel Layout

For example, a solar panel system that produces 2 kW of power for 4 hours generates 8 kWh of energy. Considerations for seasonal variations. The solar output of a solar ...



Mounting Solar Panels: A Complete Beginner's Guide to Installation

See also: Solar Panel Carport (Costs + Installation) Step 2: Installing Racking Rails. Just as we do on a rooftop install, setting up racking rails correctly on the ground is a ...



Best direction for solar panels: How to position your solar PV panels

To find out, we used the MCS PV Output Calculator, which lets MCS-certified solar panel installers calculate the best direction and angle for panels anywhere in the UK. It ...



What is a solar tracker and is it worth the investment?

This isn't always practical, as you need someone to constantly monitor the sun and change the position of the solar panel system. Solar trackers can greatly increase the cost of a photovoltaic solar installation. A standard 4-kilowatt ...



Best Angle And Orientation For Solar Panels - Forbes ...

For most homeowners, the ideal angle for a solar panel installation is close to or equal to the latitude of your home. This angle is typically between 30 degrees and 45 degrees.

What's the Best Angle for Solar Panels? , EnergySage

South-facing panels give you the most bang for your buck because the sun crosses the sky in the south, giving the panels more sunlight. "We tell people that a solar panel ...



Solar panel orientation

The placement and orientation of solar panels is just as important as which type of solar panel is used in a given situation. A solar panel will harness the most power when the Sun's rays hit its ...



What is the best angle for positioning solar panels in the UK?

The optimal angle for solar panels in the UK is facing south, at an angle between 20° and 50°. The best angle is worked out based on your location's latitude, which means the ...

TAX FREE

ENERGY STORAGE SYSTEM

Product Model
HJ-ESS-215A(100KW/215KWh)
HJ-ESS-115A(50KW 115KWh)

Dimensions
1600*1280*2200mm
1600*1200*2000mm

Rated Battery Capacity
215KWH/115KWH

Battery Cooling Method
Air Cooled/Liquid Cooled




Solar Panel Installation

Use our solar panel buying advice and see our solar panel brand reviews to help make your decision. What is the best angle and roof direction for solar panels? The table below shows the percentage of the ...

Comprehensive Guide for Solar Panel Mounting Hardware

3. Types of Solar Panel Mounts. Different types of solar panel mounts cater to various installation requirements and environmental conditions. If you understand the different ...



Installing a Photovoltaic System in Cyprus: Complete Guide

Comparison of Panel Types. When choosing a photovoltaic panel, it is essential to consider the efficiency, cost, and available space for installation. Monocrystalline panels are the most ...



What is the best direction for solar panels to face?

South-facing solar panels will perform the best for a vast majority of homeowners. If you do not have a south-facing roof - don't worry! Your solar panels will still be able to produce energy, ...

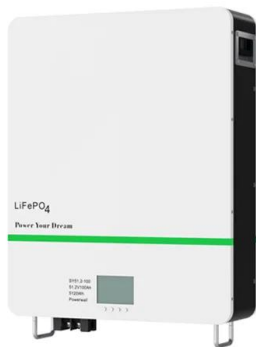


Which Is More Important: Solar Panel Orientation or ...

The majority of solar panel systems are installed at the angle that maximizes sunlight exposure for that location. For most homeowners, the ideal solar panel installation angle is close or equal to the latitude of your ...

Solar panel inclination angle, location and orientation

Any implementation of a sustainable photovoltaic solar energy system implies the optimization of the resources to be used. Therefore, it is the basis for the design and ...



The Ultimate Guide to DIY Solar Panel Installation

Final Thoughts. Performing your own DIY solar panel installation is an empowering step towards energy independence and sustainability. Throughout our guide, ...



A Full Guide to Solar Panel Placement and Installation

Solar panel installation is a great way to save money on your electricity bill or reduce your carbon footprint. The process is relatively simple and there are a number of rebates and incentives available to help offset the cost. ...



Solar Panel Angle Calculator: The Definitive Guide

Annual energy output vs panel tilt angle, for a South-facing 5 kW array in Phoenix, Arizona
Tilting the panels significantly increases energy output (read our article to ...)

Solar Tracking System: Working, Types, Pros, and Cons

The main application of solar tracking system is to position solar photovoltaic (PV) panels towards the Sun. Most commonly they are used with mirrors to redirect sunlight on the ...



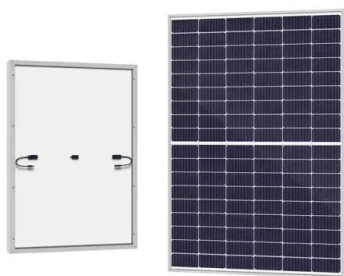
Best direction for solar panels: How to position your ...

To find out, we used the MCS PV Output Calculator, which lets MCS-certified solar panel installers calculate the best direction and angle for panels anywhere in the UK. It reveals how much more, and less, energy a ...



Solar Panels Vertical Or Horizontal (Which Orientation Is Best!)

your roof type for solar panel installation; what angle gets the most sunlight; There's no difference in the output solar panels produce regarding orientation. But there are ...



[Solar Panel Orientation Guide](#)

Additionally, the azimuth angle, which is the compass direction of the sun's position relative to true north, also plays a role in determining the optimal orientation of your solar panels. What's the Ideal Solar Panel Direction ...

Solar Panel Installation

And as an added bonus, VAT on solar panel installation is zero because it's part of an energy saving solution. It's a win-win! Set up for the Future. To make sure that electricity is fed to the ...



LFP 48V 100Ah



What is the best angle for positioning solar panels in the UK?

If your roof isn't suitable for solar panel installation, you can mount them on an external wall. Although they can be trickier to install, you'll find they're much easier to maintain ...



Which Solar Panel Direction (Orientation) Is Best?

Power Loss Table: This table shows how much energy you can expect to get from almost any combination of solar panel direction and angle in the capital cities, compared ...



Best Angle & Direction For Solar Panels in the UK , Glow Green

One of the most important principles in solar panel positioning is that panels should face the equator - south in the Northern Hemisphere and north in the Southern ...

What Should Be The Best Solar Panel Angle and Direction for Installation?

Find optimal angle and direction for solar panel installation in India to maximize efficiency and savings. Learn key tips for the perfect solar setup. The best position for a ...



The best angle and direction for solar panels [UK, 2024]

Unlike the slight regional variation in optimum angles, the best direction remains constant across the country, according to the MCS. If your roof has a south-facing section, your installer should prioritise using it, but if not, ...





What Direction and Angle Should Solar Panels Face in India?

Orientation: A south-facing roof is generally considered ideal for maximizing solar energy production. East and west-facing roofs can also be suitable but may have slightly ...



Best Angle & Direction for Solar Panels UK: November ...

The best angle for solar panels in the UK is between 30° and 40°.; To ensure that your solar panels can produce energy optimally, they should be installed on a south-facing part of your roof.; Solar panel angle and ...

Contact Us

For catalog requests, pricing, or partnerships, please visit:
<https://vdbconstruction.co.za>