

# **Which side are the photovoltaic panels installed on**





## Overview

---

To ensure that your solar panels can produce energy optimally, they should be installed on a south-facing part of your roof. Which direction should solar panels be positioned?

When you position solar panels based on true south and the azimuth angle (the sun's angle in relation to true north and true south), you get the most optimized orientation for production and efficiency. Solar Tip: If you're not sure which direction your roof faces, you can look your address up on Google Maps.

What is solar panel direction?

'Solar panel direction' refers to the orientation of solar panels specifically the cardinal direction at which they are positioned to face the sun. In the Northern Hemisphere, the optimal direction is typically true south allowing panels to capture the maximum amount of sunlight throughout the day. What Is The Best Angle For Solar Panels?

.

Where should solar panels be installed?

To maximise the output of solar panels, you will want to have them installed on a south-facing section of your roof. South-facing solar panels in the UK receive the most sunlight exposure, as the sun is in the sky the most in this direction.

Which direction should solar panels face in the UK?

In the UK, solar panels should ideally face south in order to capture the most daylight throughout the day. It's best to avoid installing solar panels that face north, since there's never much daylight from that direction in the northern hemisphere. Panels can still perform well facing east or west.

Where should solar panels be placed in the UK?



The best spot for solar panels in the UK is a roof that faces south and has a tilt of about 35 degrees. But remember, these are just general guidelines. Other factors - like shading from your immediate environment and your specific location - could affect where your installer can place your solar panels.

What is solar panel angle?

Solar panel angle is also known as the vertical tilt of your solar panel system. For example, a solar panel array that's perpendicular to the ground has a 90-degree angle tilt. To harness solar power more efficiently, solar panels should be angled to face the sun as closely as possible.



## Which side are the photovoltaic panels installed on

---

### Evaluating the real-world performance of vertically installed ...



1 Introduction. The rising need for eco-friendly and renewable energy solutions has amplified the focus on photovoltaic (PV) systems. Bifacial PV (BiPV) panels, among these ...

### [Wall Mounted Solar Panels: The Complete Guide](#)

It'll usually take two to three days for wall-mounted solar panels to be installed -but this can vary, depending on the size of the property, the number of panels being installed, ...



### Solar panel myths: five common concerns about solar PV debunked

Read more: our guide to solar panel installation.  
4. There isn't enough sun for solar panels. Although the UK is not famously sunny, we do have enough sunlight for solar panels to work ...



### Solar Panel Installation

Which? advice on solar PV panel installation. Find out if your home is suitable for solar PV, the best roof orientation for solar panels and tips to ensure your installation goes smoothly.



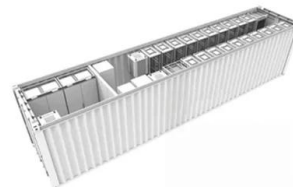
### Solar Panels on Side of House: Comprehensive Guide on Wall ...

When considering wall-mounted solar panels, it's essential to evaluate several factors to ensure your home is suitable for such an installation. Start by examining the solar potential of the walls ...



### How are solar panels installed? , 11 steps explained

In this guide, we'll explain a typical solar panel installation from start to finish, as well as what all the hardware does, and where on your property you can install the panels. ...



### How close to the edge of your roof can your solar ...

In the past I've written about solar panel clamping zones which determine where, on a solar panel's edge, you can place the clamps that attach the modules to their mounting rails. What I didn't do was go into just where on ...





## Solar panel inclination angle, location and orientation

Any implementation of a sustainable photovoltaic solar energy system implies the optimization of the resources to be used. Therefore, it is the basis for the design and ...



### [Best Angle & Direction for Solar Panels UK](#)

The best angle for solar panels in the UK is between 20° and 50°. The best direction is to have your panels facing south, followed by west or east. You can position/optimize your panels on a flat roof using a mounting system. ...

## Installing Solar Panels on a Terrace: Benefits and How-To

For a rooftop solar panel installation, it's good to know that costs differ around the world. In 2022, solar panel costs varied by country. For example, in Australia, the average ...



### **How to Install Solar Panels (Detailed Step-By-Step Guide)**

How to install solar panels wiring . Solar panel wiring installation is not overly complicated if you understand basic electricity procedures. First, there is a positive wire and a ...



### Which Is More Important: Solar Panel Orientation or Angle?

For homeowners in the northern hemisphere, even though it's possible to install panels on the north side of your roof, it's actually the worst location for solar production. If ...



### Solar panel orientation

Direction. In the northern hemisphere, the general rule for solar panel placement is, solar panels should face true south (and in the southern, true north). Usually this is the best direction because solar panels will receive direct light ...

### Solar Panel Orientation: Landscape vs Portrait , Fenice Energy

Landscape vs Portrait Orientation for Solar Panels. Introduction: There is much more before the decision of going solar it is not just the green energy authorities, but another ...



### Solar Panel Positive and Negative (Diode

You will need an MC4 solar adapter cable to connect a solar panel to your charge controller. Try to find a solar panel cable that has one pre-attached. Step 5: Put the ...



### Wall-Mounted Solar Panels: Your Questions ...

It's not logical to install your solar panels on a wall that isn't south-facing since wall-mounted systems already have setbacks in their energy generation due to their slope. Because wall-mounted solar panels are vertical ...



### **A guide for where to place your solar panels , Geo Green Power**

Whether you are having a domestic or a commercial solar panel installation, it is important to understand the factors involved in finding the ideal location for your panels to get ...



### **A Comprehensive Guide to Bifacial Solar Panels**

Bifacial solar panels are installed depending on their type. The more a bifacial solar panel is tilted, the more energy it delivers. The active surface on the rear side means ...

### **Highvoltage Battery**



### **How are solar panels installed? A step-by-step guide**

At Otovo, there is no standard solar panel installation, as all of our experts' recommendations are tailor-made for your home. Get a free quote! How solar panels are ...



## Solar panels

Finding an unshaded spot is best, but sometimes shading is unavoidable. Some solar panel systems can minimise the impact of shading using 'optimisers'. Solar optimisers help improve the overall performance of your ...



## Blocking Diode and Bypass Diodes in a Solar Panel ...

Photovoltaic cell inside a solar panel is a simple semiconductor photodiode made from interconnected crystalline silicon cells which suck/absorb photon from the direct sunlight on its surface and convert it to the electrical ...



## The best angle and direction for solar panels [UK, 2024]

The impact of direction on solar panel output. Your solar panel system's direction is one of the biggest factors in determining its output. This chart below uses an ...



## The best angle and direction for solar panels [UK, 2024]

Solar panels should ideally face south in the UK, though arrays that face east or west can also be extremely productive. North-facing solar panels aren't usually worth installing. On the other hand, panels that point towards the ...





### Which Direction Solar Panels Should Face in South Africa

The angle at which solar panels are installed is equally important in their efficiency. It is generally recommended to orient the panels at an angle of 25 to 35 degrees in ...

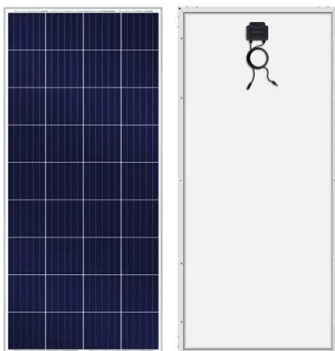


### A step-by-step guide to installing solar panels

3. Make space for the solar panel accessories (solar inverter, cables and solar batteries, if desired), for instance in a plant room. 4. Plan a day for installation. 5. Erect the scaffolding (this can be done by your supplier or by ...

### Solar Panels Vertical Or Horizontal (Which Orientation Is Best!)

your roof type for solar panel installation; what angle gets the most sunlight; There's no difference in the output solar panels produce regarding orientation. But there are ...



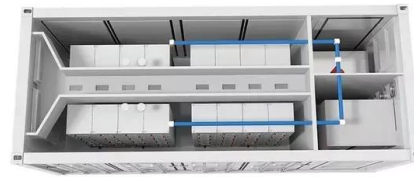
### How to Install Solar Panels on a Roof: A Step-by-Step Guide

Here is a stepwise description of how to install solar panels on the roof: Step 1: Identify the Roof Space . Solar rooftop panels are installed using solar mounts. Identifying the ...



### Horizontal vs Vertical Solar Panel Installation

Depending on the climate, your roof's construction, and your solar energy needs, horizontal solar panel installation may be the right choice for your home. The amount of direct sunlight could impact the direction in which ...

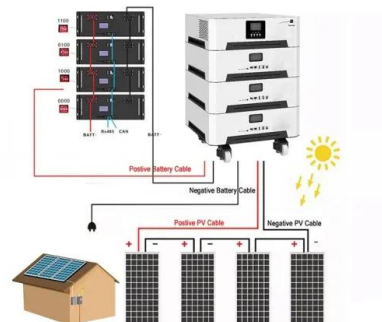


### What Direction Should My Solar Panels Face?

When you make the decision to install a solar panel system at your home, there are going to be several questions on your mind. How large should your system be, how much ...

### What Side of House is Best for Solar Panels (Solar ...

Solar Panel Direction by Zip Code . Solar panel direction by zip code is determined by the angle of the sun's rays in relation to the earth. The angle of the sun's rays changes throughout the year, so the best solar panel ...



### What's the Best Angle for Solar Panels? , EnergySage

South-facing panels give you the most bang for your buck because the sun crosses the sky in the south, giving the panels more sunlight. "We tell people that a solar panel costs the same amount regardless of what ...



## Solar panel inclination angle, location and orientation

The optimal tilt angle of photovoltaic solar panels is that the surface of the solar panel faces the Sun perpendicularly. However, the angle of incidence of solar radiation varies during the day and during different times of ...



## Contact Us

---

For catalog requests, pricing, or partnerships, please visit:  
<https://vdbconstruction.co.za>