

Why choose the middle capacity for photovoltaic panels





Overview

How does the size of a solar panel affect its efficiency?

The size of a solar panel affects its efficiency, with larger panels generally being more efficient but also more expensive and heavier. The size of a solar panel should be chosen based on factors such as available space, energy needs, and budget.

Do solar panels have a higher wattage?

A solar panel's physical size tends to strongly correlate with its wattage. As a general rule, larger solar panels have higher power output than smaller ones. This is because larger solar panels have more surface area, meaning they can accommodate more solar cells.

How to calculate required solar panel capacity?

Step-3 Calculate required Solar Panel Capacity: Perform calculations using this formula- Required PV panel wattage (Watts) = Average Daily Energy Consumption (kWh) / Average Daily Sunlight Exposure (hours) Required solar panel output = 30 kWh / 5 hours = 6 kW.

Do solar panels come in different sizes?

However, solar panels come in a range of different sizes, with varying levels of efficiency and power outputs. In this guide we'll walk you through solar panel sizes, explain what panel wattage is, and help you to calculate exactly how many solar panels your home will need. Watt (W) = the amount of power the solar panels are capable of producing.

Why do larger solar panels have more power than smaller solar panels?

As a general rule, larger solar panels have higher power output than smaller ones. This is because larger solar panels have more surface area, meaning they can accommodate more solar cells. Since solar cells are responsible for capturing sunlight and converting it into electricity, the equation is simple:



more cells = more power.

How much power does a large solar panel provide?

Risen Energy offers large solar panels at 3.1 metres that can provide 670W of power – for reference that is twice as much as standard-sized panels. Please note: large solar panels are not always necessary, they are certainly not always more efficient and may be more difficult to install. How heavy are solar panels?



Why choose the middle capacity for photovoltaic panels



Solar power

Photovoltaic (PV) panels convert absorbed sunlight energy to electricity. They make no noise, produce no emissions and can be mounted on an existing building or on a separate frame. Upfront costs can be high, but ...

How to calculate the sizing of solar panels for home

Hence, keep the availability factor in mind when choosing a solar panel for your home. Divide the capacity of the solar system (in watts) by the capacity of the module. In this case, the total ...

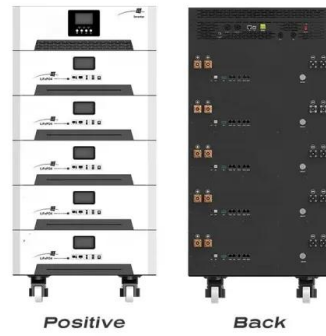


Choosing the Right Fit: Understanding Solar Panel Sizes in the UK

Find Out What Solar Panel Sizes You Need in 4 Steps. First, calculate the number of solar panels required based on the solar array size in kW and panel output in watts. Typically, the output is ...

Photovoltaic Module Technology: Choosing the Right Solar Panel ...

The most common N-type cells are TOPCON for the ease of converting a solar panel factory from P-type (PERC), the most common cells in the market to TOPCON. ...



A Guide o Choose Right Solar Panels for your home

Investing in solar power is like spending money on something brilliant. Solar power is a type of energy that's good for the environment. When you get a solar power system, the solar pv modules are the most expensive ...

solar panel batteries, solar power battery, a complete ...

Capacity: Solar panel battery capacity is important because it measures the amount of energy you can store. If you need to power certain appliances for long periods of time, you'll need more batteries to carry a bigger load. Why ...



Solar Charge Controller Sizing and How to Choose One

Solar charge controllers play an integral role in solar power systems, making them safe and effective. You can't simply connect your solar panels to a battery directly and expect it to work. ...

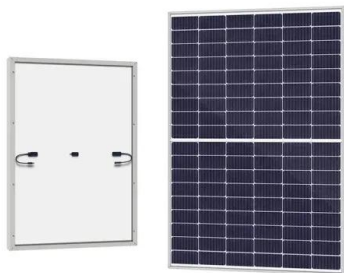


Nominal Capacity
280Ah
Nominal Energy
50kW/100kWh
IP Grade
IP54



How Many Solar Panels Do I Need For My UK Home?

A 4kW system with 10 panels can range from 14m 2 to 16m 2, depending on the capacity per panel. This size difference can vary based on whether the individual solar panels are smaller 350W ones or 450W. If you're looking to start your ...



Solar power , Your questions answered , National Grid ...

Solar farms occupy less than 0.1% of the UK's land. In the UK, new solar farms occupy roughly four acres of land per megawatt (MW) of installed capacity. To meet the UK government's net zero target, the Climate Change ...

Concentrated solar power (csp): What you need to know

For comparison, solar PV deployment by that time had reached 291 GW of installed capacity. Just as the price of PV has dropped as installations become more ...



How PV panel tilt affects solar plant performance -- RatedPower

Solar panel backtracking uses a motor and tracking control program that adjusts the tilt of the panels as the sun moves across the sky throughout the day and the year. This ...



Commercial Solar Panel Sizes: An In-Depth Guide to Picking the ...

The output capacity of a solar panel depends not only on its size but on the amount and intensity of sunlight it receives. On average, a typical commercial solar panel can ...



Lower cost larger system

Verified Supplier

20Kwh
30Kwh

Solar panels

Solar panels, or photovoltaics (PV), capture the sun's energy and convert it into electricity to use in your home. Installing solar panels lets you use free, renewable, clean electricity to power your appliances. You can sell ...

Guide to Solar Panel Sizes & Dimensions (November 2024)

Discover which solar panel sizes and dimensions are the most common in the UK, as well as which size is the best for your home. 0330 818 7480. Become a Partner. Menu. ...



How Many Solar Panels do I Need? A 2024 Guide for ...

PV solar panels tend to vary between 250w to 460w per panel, depending on the size of it and the cell technology used to create each of the modules. To calculate the number of panels you need, divide the hourly ...



Solar Panels Buying Advice

Solar panel system sizes are normally expressed in kilowatt peaks (kWp), which is the maximum output of the system. Household solar panel systems are typically up to 4kWp. We spoke to more than 2,000 solar panel owners about ...



Why Is Solar Cell Efficiency Low?

Solar energy development continues as the market evolves into more profitable photovoltaic system solutions in the long and medium term. The trend shows an exponential growth that started with around 6 GW of installed ...

Solar explained Photovoltaics and electricity

PV panels vary in size and in the amount of electricity they can produce. Electricity-generating capacity for PV panels increases with the number of cells in the panel or ...



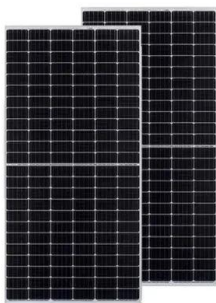
Solar Panel Sizes & Dimensions UK (2024)

The size of a solar panel should be chosen based on factors such as available space, energy needs, and budget. Solar panels can be combined to create larger systems, ...



An overview of solar photovoltaic panels' end-of-life material

In Japan, solar panel waste recycling is under the control of the Japanese environment ministry and solar panel manufacturers participate with local companies in ...



STC and NOCT - Solar Panel Test Conditions Explained

When a panel is advertised as having a capacity of 350Wp for example, this is the power it is expected to produce under STC. Solar panel cells heat up when exposed to sunlight and ...

Solar Thermal: Complete Guide to the Pros, Cons and Costs

(Image credit: getty images) Hybrid solar panels, also known as solar PVT, combine the technologies of solar PV and solar thermal into one system.. How Much do Solar ...



Solar inverter sizing: Choose the right size inverter

A 1:0.8 ratio (or 1.25 ratio) is the sweet spot for minimizing potential losses and improving efficiency. DC/AC ratio refers to the output capacity of a PV system compared to the ...



[Solar Panels Buying Advice](#)

Independent advice on how to buy solar photovoltaic panels and choosing the best solar panels for your home. Plus advice on how to find a good solar PV company, how much electricity solar panels generate and what to consider, ...



[Solar Panel Sizes and Wattage Explained](#)

Divide the average daily wattage usage by the average sunlight hours to measure solar panel wattage. Moreover, panel output efficiency directly impacts watts and the system's overall capacity. Nevertheless, energy usage, ...



[Photovoltaic panels tilt angle optimization](#)

The tilt angle of solar panels is significant for capturing solar radiation that reaches the surface of the panel. Photovoltaic (PV) performance and efficiency are highly ...



Solar Inverter Sizing to Improve Solar Panel Efficiency

We generally advise against installing more solar panel capacity than your inverter can handle. You have $(20 \times 250W =) 5000W$ (5kW) of solar panel capacity, and the inverter is also 5kW. If you want to add more panels it ...





Solar panel sizes and wattages , The Independent

Remember, one standard-sized 350W solar panel takes up 1.89m² of precious roof real estate, with more powerful panels hogging yet more - so it's a good idea to make ...



How Many Solar Panels do I Need? A 2024 Guide for the UK

Can I build my own Solar Panel System UK? - DIY Solar; Getting Solar Panel Quotes in the UK 2024; How much Space do I need for Solar Panels? UK Guide 2024; The ...

Contact Us

For catalog requests, pricing, or partnerships, please visit:
<https://vdbconstruction.co.za>