

# Wind-suitable wind turbine





## Wind-suitable wind turbine

---



### Wind Turbine Information: A Guide for the UK in 2024

Wind power is not suitable for everyone. Find out whether your site is suitable for a wind turbine here. Can I Install My Own Wind Turbine? For smaller wind turbine systems it is ...

### The Ultimate Guide to Residential Wind Turbines

They also allow wind energy to be harnessed in any direction without complex orientation mechanisms. Residential wind turbines also come in different scales such as small-scale and ...



### [Installing Small Wind Turbines for Home Use](#)

Suitable wind speeds - Most small wind turbines require average annual wind speeds of at least 10 mph (4.5 m/s) to generate enough energy to be worthwhile. Turbine ...



### Types of Wind Turbines

Welcome to your detailed guide on the different types of wind turbines available and their specific applications in the UK's diverse landscape of wind energy. Understanding the types of wind ...



48V 100Ah



### The best home wind turbines for 2024, according to experts

See It Why it made the cut: This certified, affordable, small home wind turbine should suit your needs well. Specs. Swept area: 1.07 square meters Height: Adjustable as ...



### Are Domestic Wind Turbines Worth It?

This means if a property is surrounded by tall buildings, trees, or large hills, it won't be suitable for a domestic wind turbine. The ideal location for a domestic wind turbine is ...

- Lifepo4
- Wide temp: -20°C to 55°C
- Easy to expand
- Floor mount&wall mount
- Intelligent BMS
- Cycle Life:≥6000
- Warranty :10 years



### Types of Wind Turbine: Horizontal Axis & Vertical ...

A wind turbine is a mechanical machine that converts the kinetic energy of fast-moving winds into electrical energy. The energy converted is based on the axis of rotation of the blades. The small turbines are used for ...





### Is my Site Suitable for a Wind Turbine? UK Guide 2024

Wind turbines are best suited to elevated and open sites in rural and coastal areas. It is for this reason that one finds many domestic and industrial wind turbine installations in Scotland, Ireland and Cornwall. Wind speed UK. ...



### The 3 Best Portable Wind Turbine Generators For Adventurers

Leans slightly towards a heavier build compared to the Shine Portable Wind Turbine; Not suitable for powering bigger appliances that require more energy; Specs: Min: ...



### Wind Turbine Information: A Guide for the UK in 2024

These wind turbines harness the kinetic energy of the wind and turn it into valuable electricity. The UK is an ideal place for such a renewable energy source due to the intensity of winds, especially along our coastlines. ...

48V 100Ah



### Wind Power at Home: Turbines and Battery Storage Basics

In this article, we'll delve deeper into the various types of wind turbines suitable for home use, offering a comparative analysis of their efficiencies, and providing a detailed breakdown of the ...



## Wind Turbine Planning Permission: The Ultimate Guide

A wind farm must be located in an area that has been identified as suitable for wind energy in a local or neighbourhood plan; AND. That the planning impacts identified by the ...



### [Generate energy with a wind turbine](#)

However, wind turbines generate more electricity and more regularly. Check which wind turbine is best for your business. A wind turbine is a tower with rotor blades that are turned by the wind ...

## Which wind turbine types are needed in a cost-optimal renewable energy ...

Wind power will play an important role in future energy systems globally. the total system cost is reduced as a result of choosing the turbine with the most-suitable variability characteristics. ...



## The Complete Guide to Small Wind Turbines For Your Home

Small wind turbines can lower your electricity bills by 50%. Rural homes can avoid the costs of having utility power lines extended. You can reduce your carbon emissions ...



How does a wind turbine work?

What is a wind turbine? Wind turbines are the modern version of a windmill. Put simply, they use the power of the wind to create electricity. Large wind turbines are the most visible, but you can also buy a small wind turbine ...



**Home Wind Turbines: Pros, Cons, and How Much ...**

How big a wind turbine you need to power your house will depend, of course, on how much power you use. The average UK home eats 3,731 kWh of electricity per year 7 . A pole-mounted 1.5 KW turbine could ...

**What Is the Minimum and Maximum Wind Speed for Operating a Wind Turbine ...**

To operate a wind turbine effectively, aim for wind speeds of 7 to 9 mph for power production. For peak efficiency, target speeds between 25 to 55 mph before safety ...



**Wind energy resource assessment and wind turbine selection**

The selection of a wind turbine suitable for the conditions of the wind potential from the analyzed location is very important because this process will influence the energy ...





## Small Wind Turbines for Agriculture and Farms

Suitable for installation in diverse locations including remote and hard-to-reach places, these systems can provide a reliable energy source, curtailing the need for a ...



## The Ultimate Guide To Vertical Axis Wind Turbines

Vertical axis wind turbines are suitable for rural areas due to their compact design and ability to generate electricity in low wind conditions. They offer a sustainable energy solution for off-grid communities. What Is the ...

### [Advantages and Challenges of Wind Energy](#)

Advantages of Wind Power. Wind power creates good-paying jobs. There are nearly 150,000 people working in the U.S. wind industry across all 50 states, and that number continues to ...



## Types of Wind Turbines: HAWT, VAWT and More Explained

The largest wind turbine in the world (as of Summer 2021) is the Vestas V236 turbine 1, with a rated power output of 15 megawatts (MW). It has a blade rotor diameter of ...



How Much Wind Is Needed For Wind Turbines?

Cut-in wind speed refers to the wind speed at which wind turbines begin to generate power. The cut-in wind speed for small wind turbines varies depending on the model, ranging from 9 to 16 ...

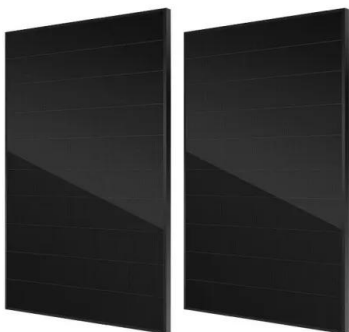


**Wind turbine , Renewable Energy, Efficiency & Design ...**

wind turbine, apparatus used to convert the kinetic energy of wind into electricity.. Wind turbines come in several sizes, with small-scale models used for providing electricity to rural homes or cabins and community ...

**Wind Energy Factsheet**

Wind speeds are slower close to the Earth's surface and faster at higher altitudes. Average hub height is 98m for U.S. onshore wind turbines 7, and 116.6m for global offshore turbines 8.; ...



[NFU Energy wind energy guide](#)

How much does it cost to buy a wind turbine? As you can imagine this varies greatly depending on the size - farm wind turbines in the range 5kW - 500kW would typically cost from around ...



## Contact Us

---

For catalog requests, pricing, or partnerships, please visit:  
<https://vdbconstruction.co.za>