

Zhurihe Solar Power Plant

 **TAX FREE**    





Zhurihe Solar Power Plant



All About 1 MW Solar Power Plant: Price, Specifications & More

High-capacity systems of over 100kW are called Solar Power Stations, Energy Generating Stations, or Ground Mounted Solar Power Plants. A 1MW solar power plant of 1 ...

Power plant profile: Inner Mongolia Tongliao Kezuo Zhong Qi Zhurihe ...

Inner Mongolia Tongliao Kezuo Zhong Qi Zhurihe Phase-I is a 49.5MW onshore wind power project. It is located in Inner Mongolia, China. According to GlobalData, ...



Photovoltaic power station

The 40.5 MW Jännersdorf Solar Park in Prignitz, Germany. A photovoltaic power station, also known as a solar park, solar farm, or solar power plant, is a large-scale grid-connected photovoltaic power system (PV system) designed for the ...

What is a solar power plant? How it works and types

The operation of a solar photovoltaic plant is based on photons and light energy from the sun's rays. The types of solar panels used in these types of facilities are also different. While solar thermal plants use collectors, photovoltaic



power ...



Solar Power Plants: Types, Components and Working ...

Solar power plants are systems that use solar energy to generate electricity. They can be classified into two main types: photovoltaic (PV) power plants and concentrated solar power (CSP) plants. Photovoltaic power ...

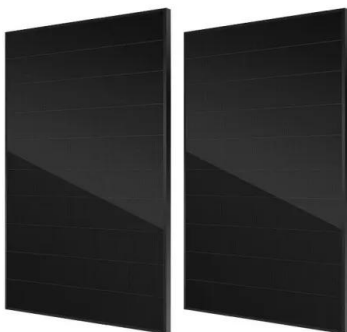
The 20 Largest Solar Power Plants in the World

The 20 Largest Solar Power Plants in the World. Solar power is rapidly becoming a star in the field of renewable energy around the world. In the United States, solar generation is projected ...



Power plant profile: Inner Mongolia CGNP Zhurihe, China

Inner Mongolia CGNP Zhurihe is a 149.3MW onshore wind power project. It is located in Inner Mongolia, China. PT. Menu. Search. Sections. Home; who tracks and ...





Solar Power Plant: Diagram, Layout, Working & Types [PDF]

The concentrated solar power plant or solar thermal power plant generates heat and electricity by concentrating the sun's energy. That, in turn, builds steam that helps to feed ...



List of 10 Largest Solar Power Plants in India

Capacity: 2,245 MW Location: Bhadla, Jodhpur district, Rajasthan Area: 14,000 acres The Bhadla Solar Park is the biggest solar power plant in India can annually generate ...

Inner Mongolia Xisu Zhurihe ' Wind Power Plant (World Map)

Inner Mongolia Xisu Zhurihe Power Plant (Wind)
The Inner Mongolia Xisu Zhurihe plant is a Wind power plant located in ?? China. Inner Mongolia Xisu Zhurihe has a peak capacity of 49.0 MW ...



Zhurihe Phase 1 ' Wind Power Plant (World Map) , database.earth

The Zhurihe Phase 1 plant is a Wind power plant located in ?? China. Zhurihe Phase 1 has a peak capacity of 49.0 MW which is generated by Wind. Generated Gigawatt Hours (2013-2019)



Concentrated solar power (csp): What you need to know

Also known as the Noor Power Station, the Ouarzazate Solar Power Station is the biggest operating solar power plant in the world, with an installed capacity of 510 ...



Solar power plant , PPT

13. Solar collectors capture and concentrate sunlight to heat a synthetic oil called terminal, which then heats water to create steam. The steam is piped to an onsite turbine-generator to produce electricity, which is then ...



Applications



Concentrated solar power

A solar power tower at Crescent Dunes Solar Energy Project concentrating light via 10,000 mirrored heliostats spanning thirteen million sq ft (1.21 km 2). The three towers of the Ivanpah Solar Power Facility Part of the 354 MW SEGS ...



Huaneng Tongliao Zhurihe Phase 1 Power Plant (Wind)

Huaneng Tongliao Zhurihe Phase 1 Power Plant (Wind) The Huaneng Tongliao Zhurihe Phase 1 plant is a Wind power plant located in ?? China. Huaneng Tongliao Zhurihe Phase 1 has a peak ...



Power plant profile: Inner Mongolia Saihan Zhurihe

Inner Mongolia Saihan Zhurihe Wind Power Project is a 30MW onshore wind power project. It is located in Inner Mongolia, China. According to GlobalData, who tracks and ...



[Wind Power Plants in China \(Map\)](#)

Data and information about Wind power plants and their location plotted on an interactive map of China. database.earth; Population. Solar Power Plants; Wind Power Plants; Climate. ...

Here's how solar power plants make energy from ...

From PV to solar ponds, solar power plants use various strategies to turn the Sun's power into energy and electricity. Updated: May 03, 2023 05:11 PM EST Christopher McFadden



[What is a solar photovoltaic power plant?](#)

A solar photovoltaic power plant is a regular power plant that converts solar energy into electricity through the photovoltaic effect. This effect occurs when sunlight photons bump into a specific material and displace an ...



1 MW Solar Power Plant Cost With Complete Detail

Today, anyone can set up a solar power plant with a capacity of 1KW to 1MW on their land or rooftops. Ministry of New and Renewable Energy (MNRE) and state nodal agencies are also ...



The Advantages and Disadvantages of Solar Energy , Earth

First and foremost, solar power plants require space. For example, a solar power plant to provide electricity for 1,000 homes would require 32 acres of land. This means that, in ...

Power plant profile: Inner Mongolia Tongliao Kezuo Zhong Qi Zhurihe ...

Inner Mongolia Tongliao Kezuo Zhong Qi Zhurihe Phase-2 is a 49.5MW onshore wind power project. It is located in Inner Mongolia, China. According to GlobalData, who tracks and ...



A Guide to Large Photovoltaic Powerplant Design

Grid connection for commercial solar power plants is often 11 kV or higher, so it's usually necessary to step up the voltage using one or more transformers. The type of ...



Where are the World's Largest Solar Power Plants?

India's Bhadla Solar Park is the world's largest solar park as of the time of the dataset has the capacity to generate 2,245 megawatts of electricity alone, enough to power ...

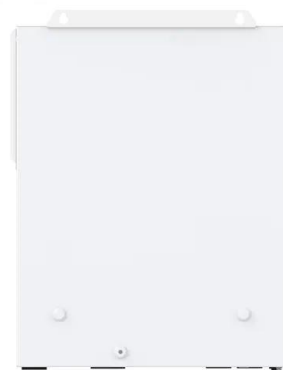


Zhurihe ' Wind Power Plant (World Map) , database.earth

Zhurihe Power Plant (Wind) The Zhurihe plant is a Wind power plant located in ?? China. Zhurihe has a peak capacity of 33.4 MW which is generated by Wind. Generated Gigawatt Hours ...

Solar power tower

A solar power tower, also known as 'central tower' power plant or 'heliostat' power plant, is a type of solar furnace using a tower to receive focused sunlight. It uses an array of flat, movable ...



Contact Us

For catalog requests, pricing, or partnerships, please visit:
<https://vdbconstruction.co.za>